



1 Weavercroft, Didcot, OX11 7RR

£1,500 PCM - 30th January 2026.

- Two bedroom, end of terraced house
- Fully furnished
- Landscaped garden, with shed, and side access.
- Allocated parking for 2 cars.
- Gas central heating
- EPC rating C, Council Tax Band C.

1 Weavercroft, Didcot OX11 7RR

A well-presented two bedroom, end of terraced house available on a fully furnished basis. A newly fitted kitchen including washing machine, dishwasher, gas hob, electric oven, fridge/freezer. Living space with sofa, table and chairs, and patio doors leading out to a landscaped garden, with shed, and side access. Shower room, with electric shower over bath, and two double bedrooms with double bed, chest of drawers, and built-in storage. Gas central heating. Located in quiet cul-de-sac on the Ladygrove development with easy walking distance to the station, town centre and local shops, bus to Milton Park and Harwell. Allocated parking for 2 cars. EPC rating C, Council Tax Band C.

The Ofcom Broadband Checker states there is:

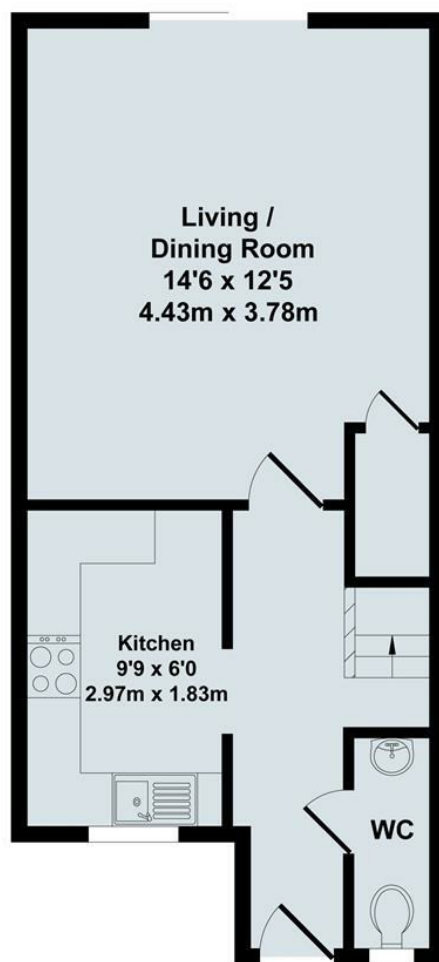
- Ultrafast broadband has download speeds of greater than 300Mbps.

When an application is agreed a holding deposit will be required of a maximum of one weeks rent

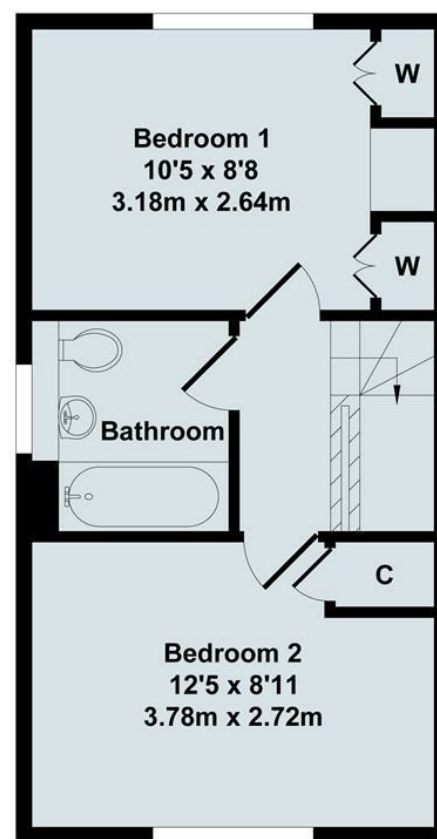


Council Tax Band: C





Ground Floor



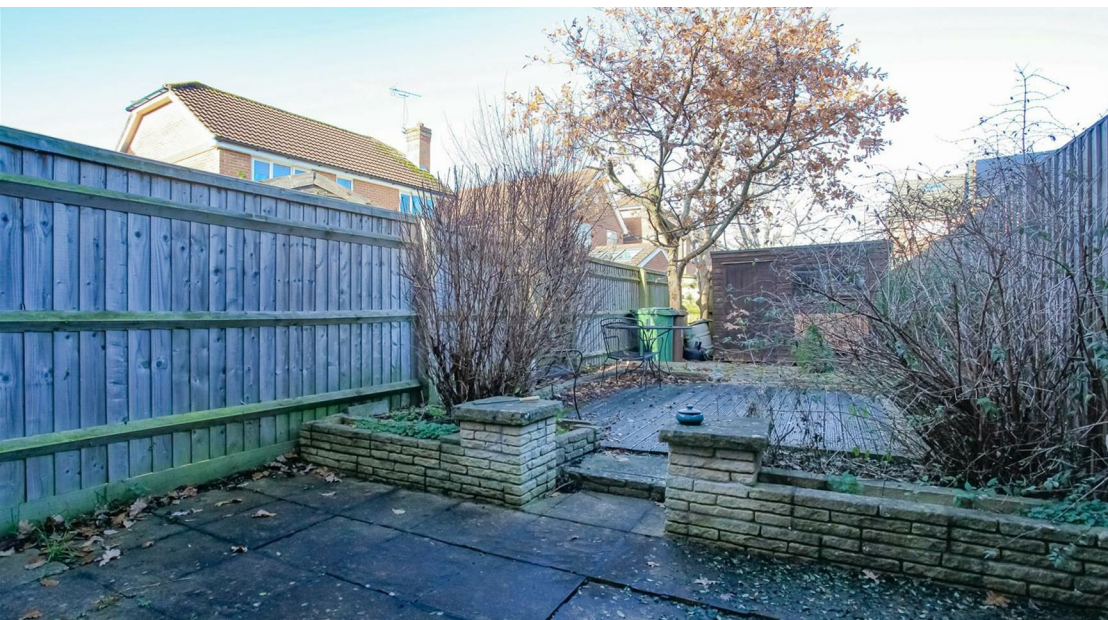
First Floor




Total Approx. Floor Area 631 Sq.Ft. (58.60 Sq.M.)

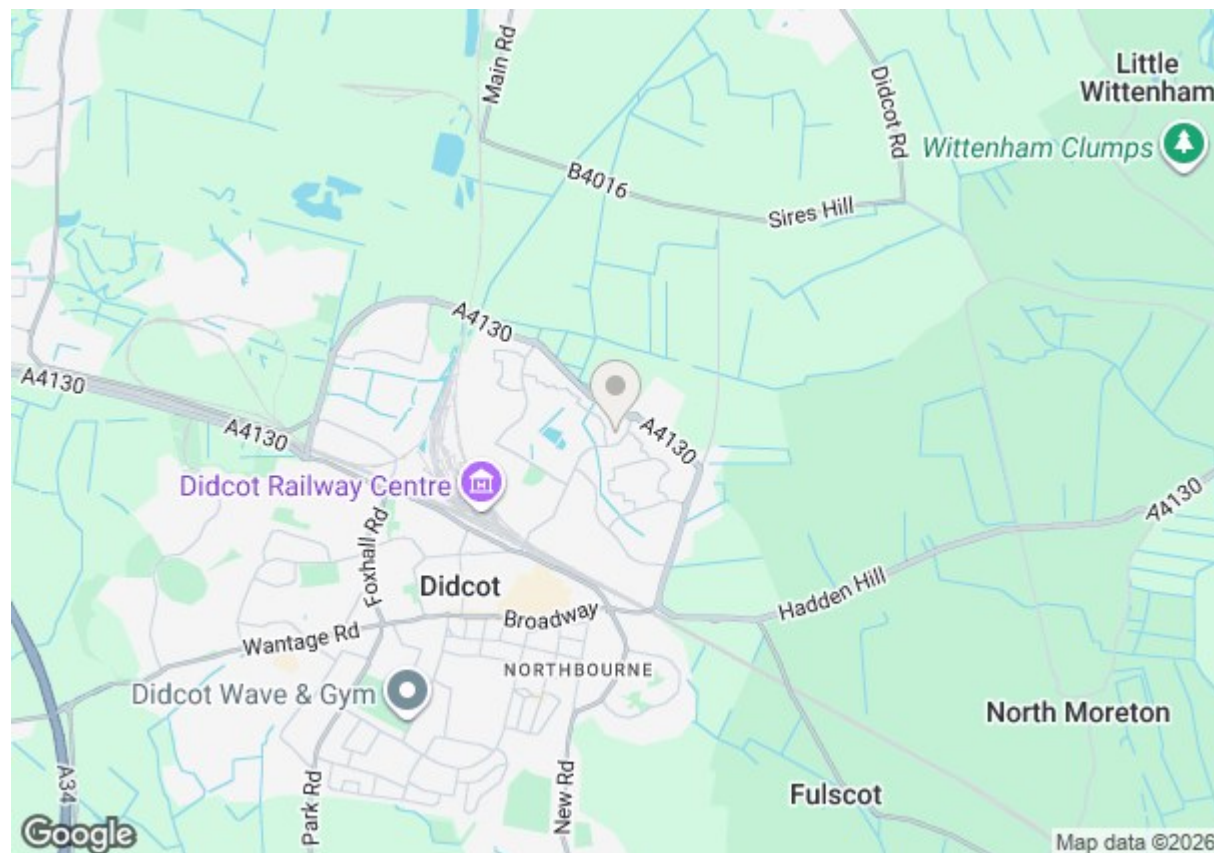
All items illustrated on this plan are included in the "Total Approx Floor Area"





Energy Efficiency Rating

	Current	Potential
Very energy efficient - lower running costs		
(92 plus) A		
(81-91) B		87
(69-80) C	69	
(55-68) D		
(39-54) E		
(21-38) F		
(1-20) G		
Not energy efficient - higher running costs		
England & Wales	EU Directive 2002/91/EC	



Directions

Viewings

Viewings by arrangement only. Call 01235 514267 to make an appointment.

Council Tax Band

C