



## 5 Whittington Crescent, Wantage, OX12 9GB

£1,900 PCM - 10th January 2026.

- Three bedroom semi detached house
- Immaculately presented
- Single garage and parking
- Gas Central Heating
- Ensuite to bedroom one
- EPC C, Council Tax Band D

# 5 Whittington Crescent, Wantage OX12 9GB

Immaculately presented, 3 bedroom semid detached house located in a quiet location.

Comprising of accommodation over 3 floors. Open plan kitchen/sitting room with gas hob, oven, fridge/freezer, washer dryer/ dishwasher, downstairs wc, 2 double bedrooms, further double bedroom on 2nd floor with ensuite shower. Family bathroom with shower over bath. All upvc. Enclosed rear garden with gate leading to single garage and allocated parking. Gas Central Heating. EPC C. Council Tax Band D.

The Ofcom Broadband Checker states there is:

- Ultrafast broadband has download speeds of greater than 300Mbps

When an application is agreed a holding deposit will be required of a maximum of one weeks rent



Council Tax Band: D

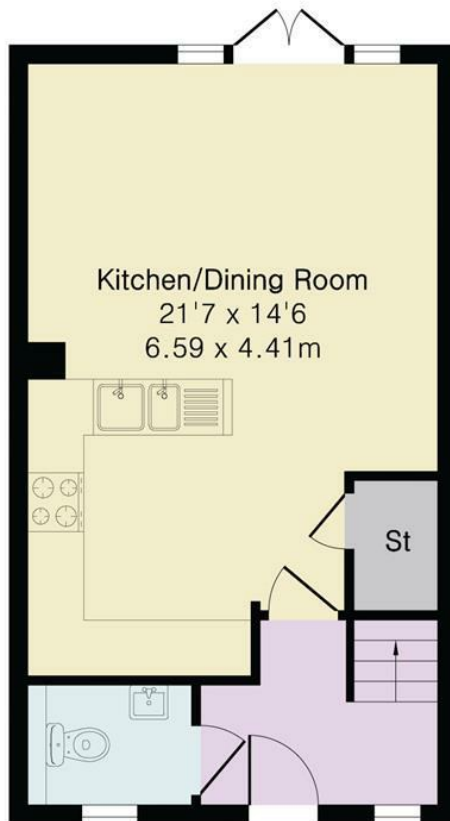


**Approximate Gross Internal Area 1116 sq ft - 103 sq m**

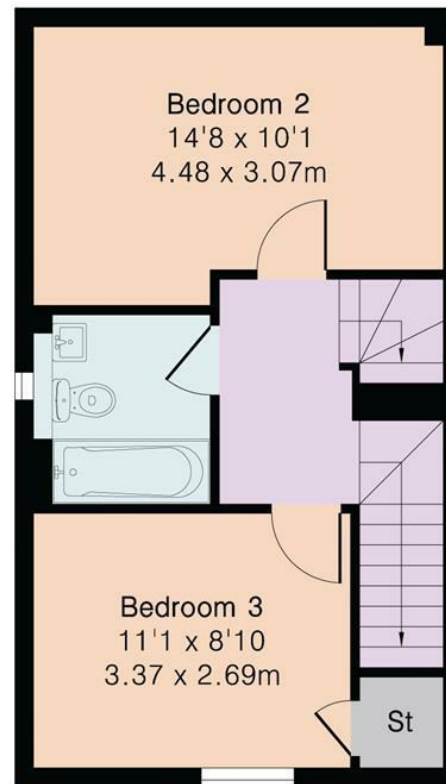
Ground Floor Area 379 sq ft – 35 sq m

First Floor Area 379 sq ft – 35 sq m

Second Floor Area 358 sq ft – 33 sq m



Ground Floor



First Floor




Second Floor









Energy Efficiency Rating		
	Current	Potential
Very energy efficient - lower running costs		
(92 plus) <b>A</b>		
(81-91) <b>B</b>		
(69-80) <b>C</b>	<b>73</b>	<b>78</b>
(55-68) <b>D</b>		
(39-54) <b>E</b>		
(21-38) <b>F</b>		
(1-20) <b>G</b>		
Not energy efficient - higher running costs		
<b>England &amp; Wales</b>	EU Directive 2002/91/EC	



## Directions

## Viewings

Viewings by arrangement only. Call 01235 514267 to make an appointment.

## Council Tax Band

D