



West Bow 50 Frilford Road, Marcham, Abingdon, Oxon, OX13 6NR

£1,600 PCM - 25th July 2025.

- A Grade II Listed 18th Century three bedroom cottage
- Located in popular Marcham village
- Gas central heating
- Double car port
- 2 reception rooms

West Bow 50 Frilford Road, Abingdon OX13 6NR

A Grade II Listed 18th Century three bedroom cottage located in popular Marcham village. Comprising of fully fitted kitchen/breakfast room with cooker, fridge/freezer, dishwasher, utility room with washing machine and tumble dryer. downstairs cloakroom, 2 reception rooms, 3 bedrooms, 2 bathrooms, gas central heating. Good size enclosed rear garden with double car port and storage space to either end.

The Ofcom Broadband Checker states there is:

- Superfast broadband has a download speeds between 30Mbps and 300Mbps.

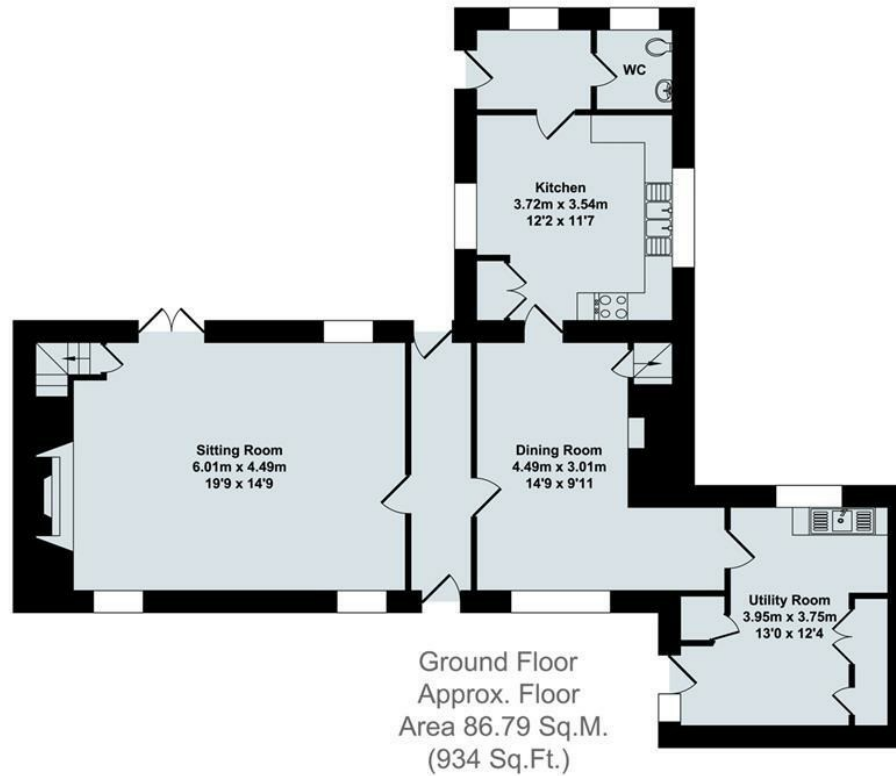
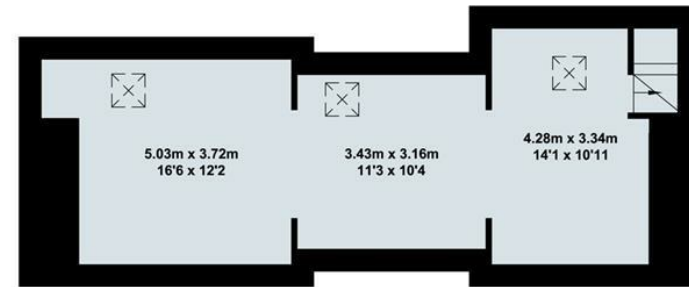
When an application is agreed a holding deposit will be required of a maximum of one weeks rent



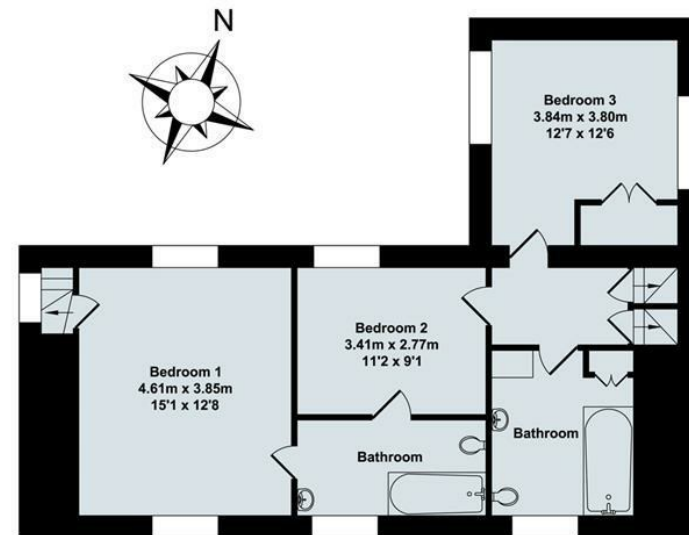
Council Tax Band: G



Second Floor
Approx. Floor
Area 42.71 Sq.M.
(460 Sq.Ft.)



Ground Floor
Approx. Floor
Area 86.79 Sq.M.
(934 Sq.Ft.)

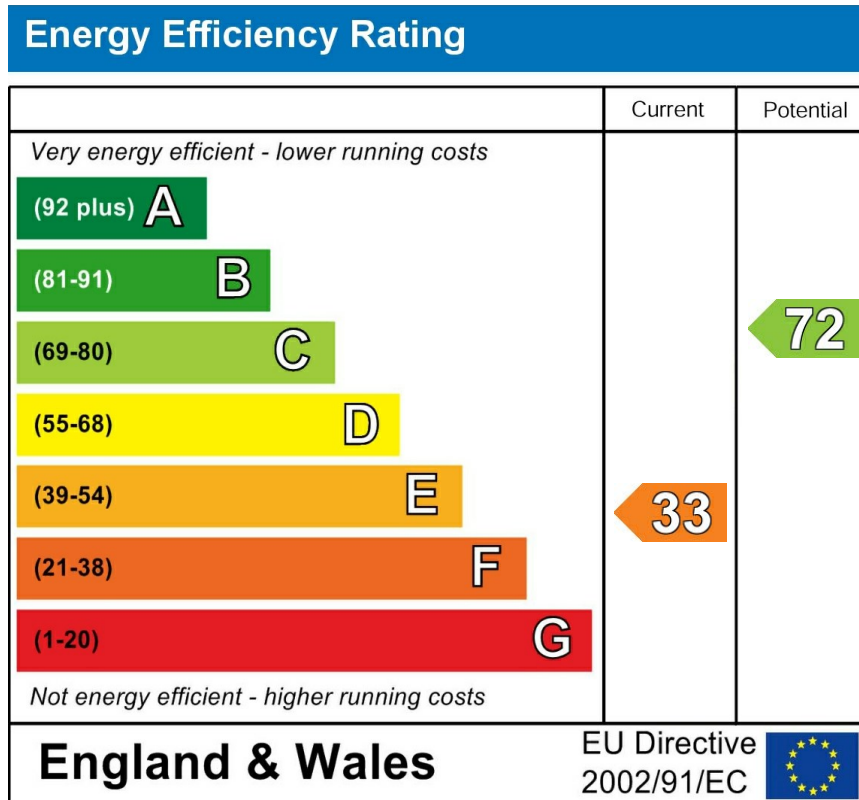


First Floor
Approx. Floor
Area 65.60 Sq.M.
(706 Sq.Ft.)

Total Approx. Floor Area 195.10 Sq.M. (2100 Sq.Ft.)







Directions

Viewings

Viewings by arrangement only. Call 01235 514267 to make an appointment.

Council Tax Band

G