



8 Dunnock End, Didcot, Oxon, OX11 6AD

£1,750 PCM - 9th May 2025.

- Three Bedroom Detached House
- Driveway Parking
- EPC Rating B
- Gas Central Heating
- South Facing Garden
- Great Western Park
- Council Tax Band D

8 Dunnock End, Didcot OX11 6AD

Three bedroom detached house located in a quiet location on popular Great Western Park development. The property presents itself to a high standard. Fully fitted kitchen with gas hob, electric oven, fridge/freezer, dishwasher and washer dryer. Sitting room, downstairs wc, ensuite to bedroom one and 2 further bedrooms. Driveway with parking for two cars, rear garden and shed. Gas central heating, UPVC windows and doors. EPC Rating B. Council Tax Band D

The Ofcom Broadband Checker states there is:

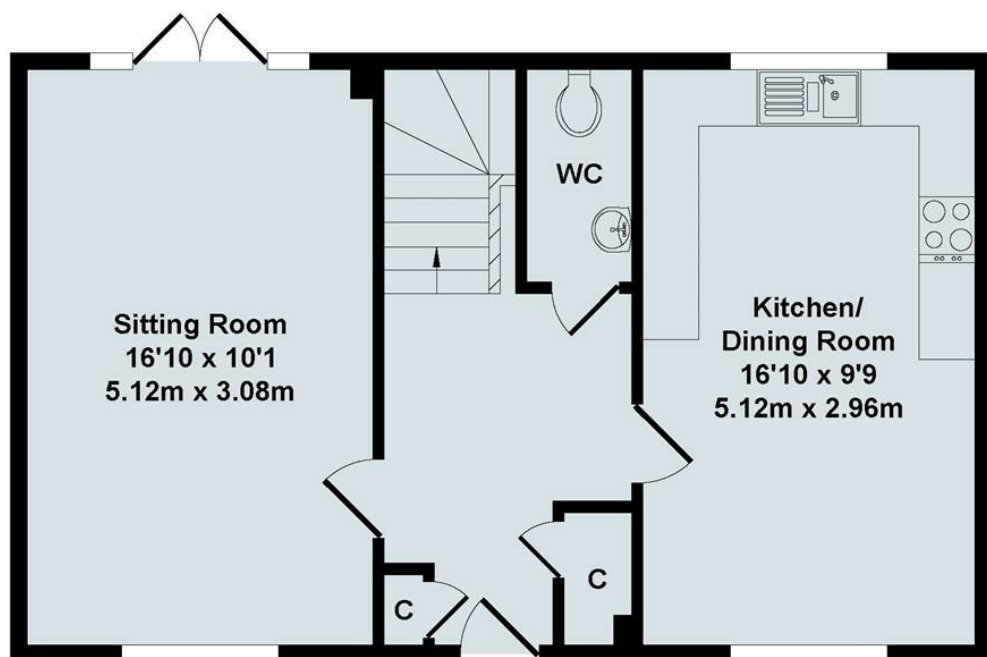
- Ultrafast broadband has download speeds of greater than 300Mbps

When an application is agreed a holding deposit will be required of a maximum of one weeks rent

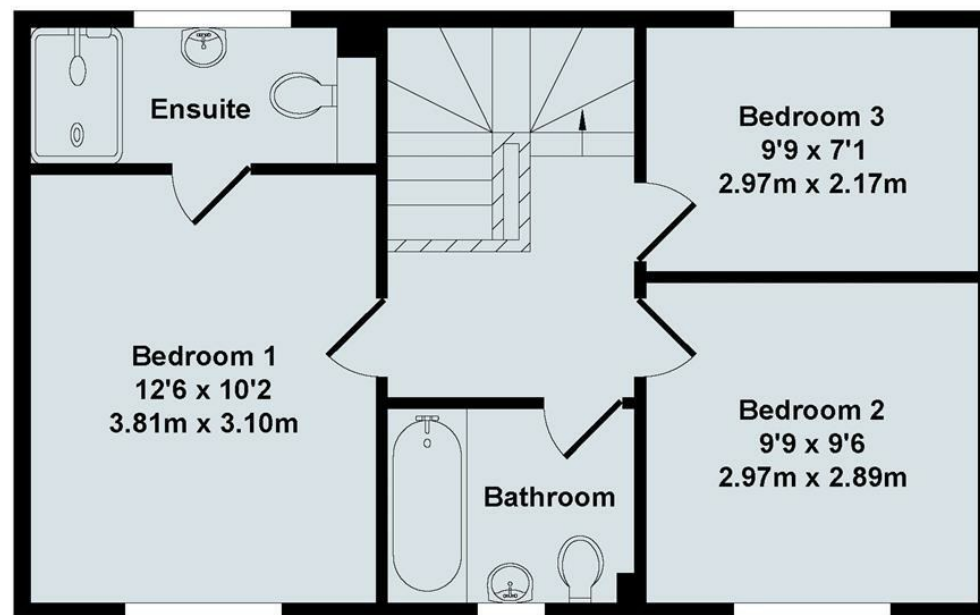
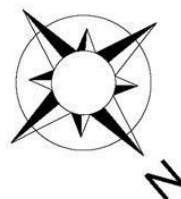


Council Tax Band: D





Ground Floor



First Floor


Total Approx. Floor Area 930 Sq.Ft. (86.40 Sq.M.)

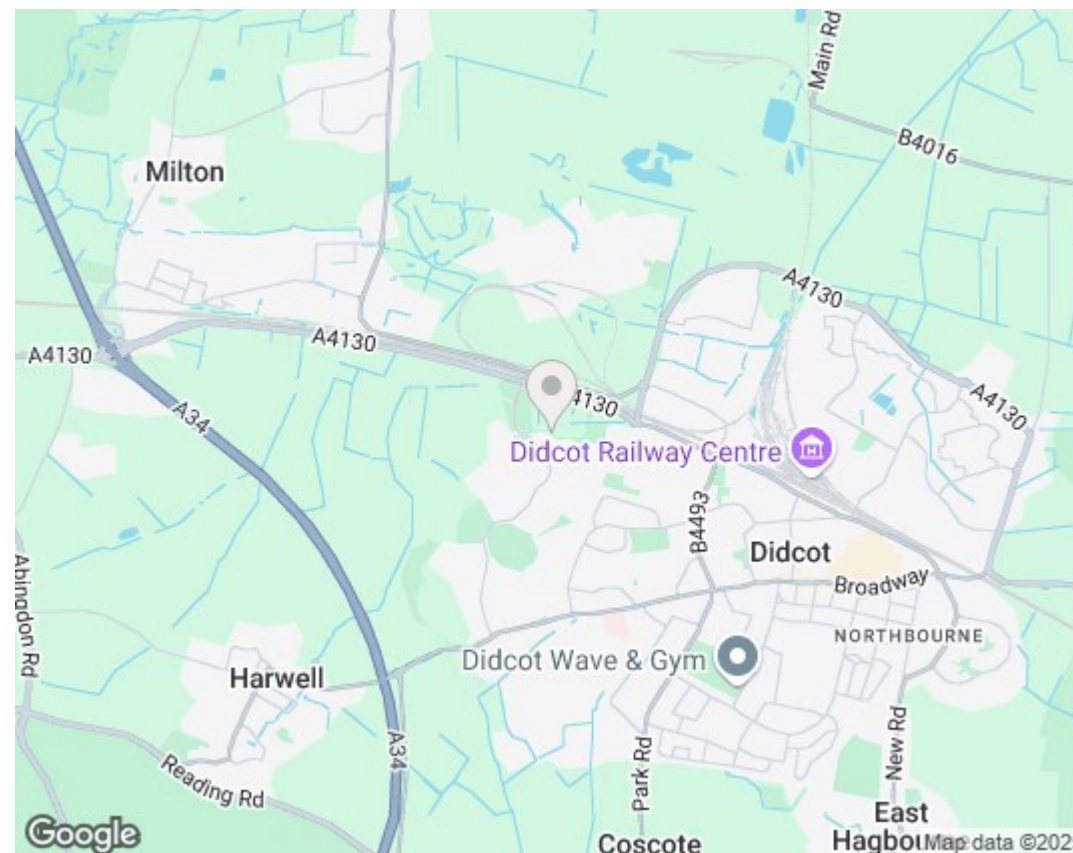
All items illustrated on this plan are included in the "Total Approx Floor Area"





Energy Efficiency Rating

	Current	Potential
Very energy efficient - lower running costs		
(92 plus) A		94
(81-91) B	83	
(69-80) C		
(55-68) D		
(39-54) E		
(21-38) F		
(1-20) G		
Not energy efficient - higher running costs		
England & Wales	EU Directive 2002/91/EC	



Directions

Viewings

Viewings by arrangement only. Call 01235 514267 to make an appointment.

Council Tax Band

D