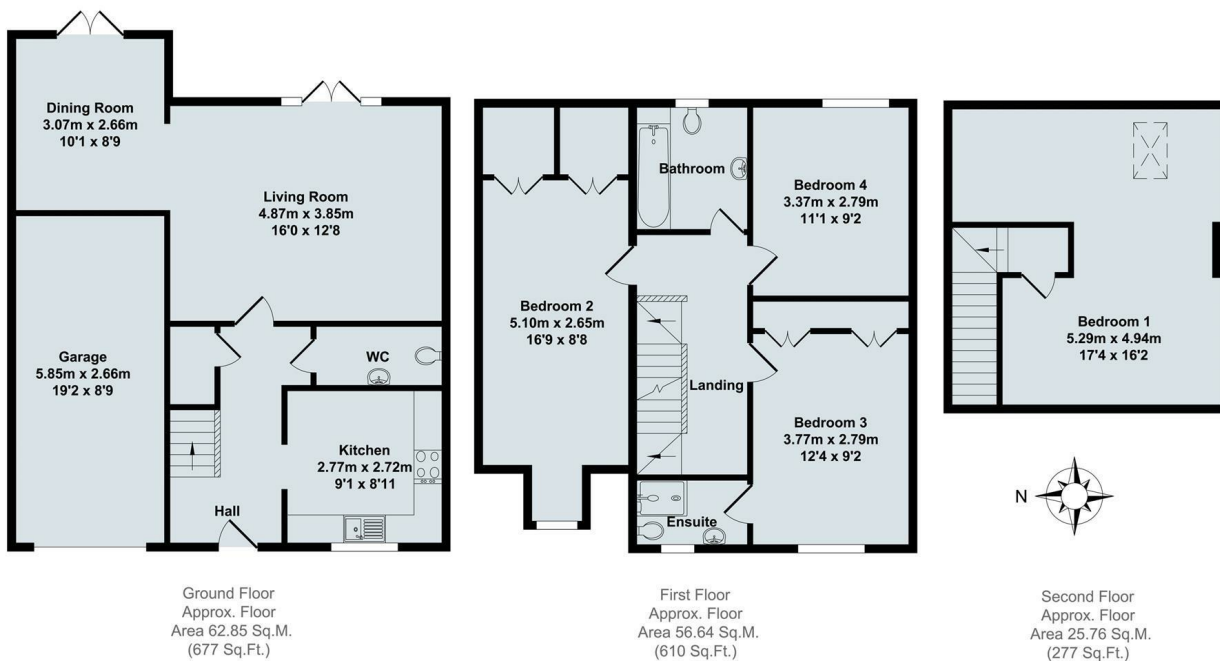




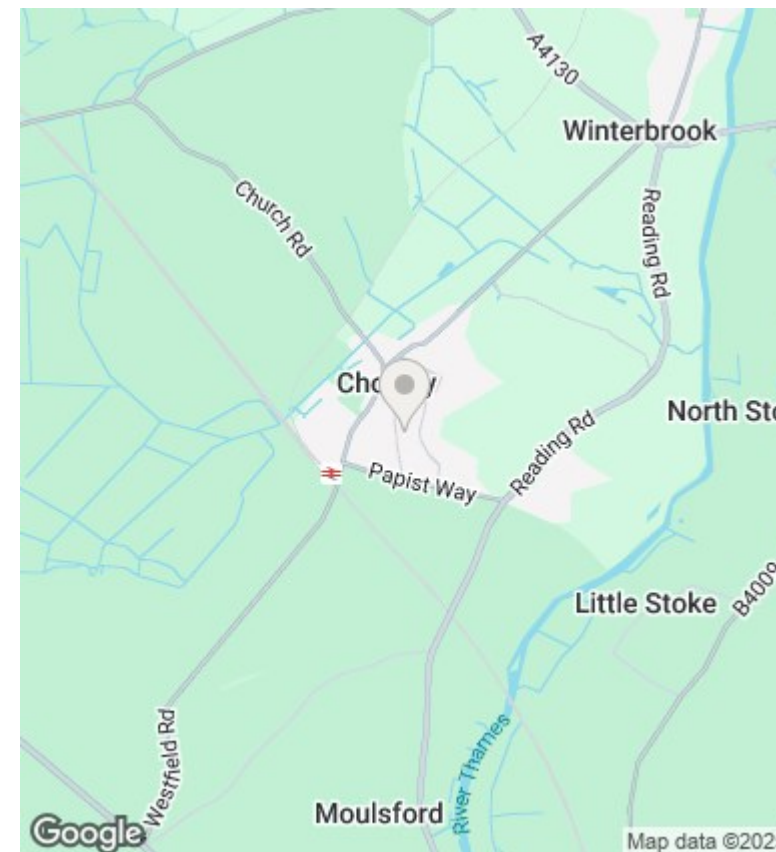
## 2 Beehive Close, Cholsey, Oxon, OX10 9BF

£1,600 PCM - 6th May 2025.

- Four bedroom house located in the centre of this popular village
- Four double bedrooms
- EPC Rating C
- Fully fitted kitchen
- Single garage and parking space
- Council tax Band D
- Sitting room/dining room overlooking rear garden
- Gas central heating
- Ultrafast broadband



Total Approx. Floor Area 145.25 Sq.M. (1563 Sq.Ft.)



## Directions

## Viewings

Viewings by arrangement only. Call 01235 514267 to make an appointment.

## Council Tax Band

D

## EPC Rating:

Energy Efficiency Rating		
	Current	Potential
<i>Very energy efficient - lower running costs</i>		
(92 plus) <b>A</b>		
(81-91) <b>B</b>		
(69-80) <b>C</b>		
(55-68) <b>D</b>		
(39-54) <b>E</b>		
(21-38) <b>F</b>		
(1-20) <b>G</b>		
<i>Not energy efficient - higher running costs</i>		
<b>England &amp; Wales</b>	EU Directive 2002/91/EC	