



6 Winch Piece, Benson, Wallingford, OX10 6FW

£2,700 PCM - 25th October 2024.

- 4 bedroom, detached house
- Gas central heating
- Open plan kitchen/dining room
- Single garage, allocated parking for 2 cars
- 4 double bedrooms, ensuite to 2 of the bedrooms
- EPC Rating B Council Tax Band G

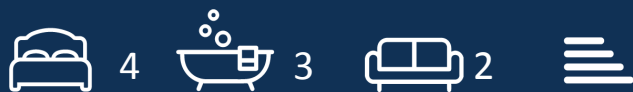
6 Winch Piece, Benson OX10 6FW

4 bedroom, detached house located on the popular Cala Home development in Benson village., within walking distance of local amenities. Open plan kitchen/dining room with gas hob, electric oven, microwave, utility room with washing machine and tumble dryer, study, sitting room, enclosed rear garden. 4 double bedrooms, ensuite to 2 of the bedrooms, walk in dressing room to bedroom one, family bathroom with shower over bath. Gas central heating, Single garage, allocated parking for 2 cars. EPC Rating B Council Tax Band G.

The Ofcom Broadband Checker states there is

Ultrafast broadband has download speeds of greater than 300Mbps.

When an application is agreed a holding deposit will be required of a maximum of one weeks rent



Council Tax Band: G









Garage

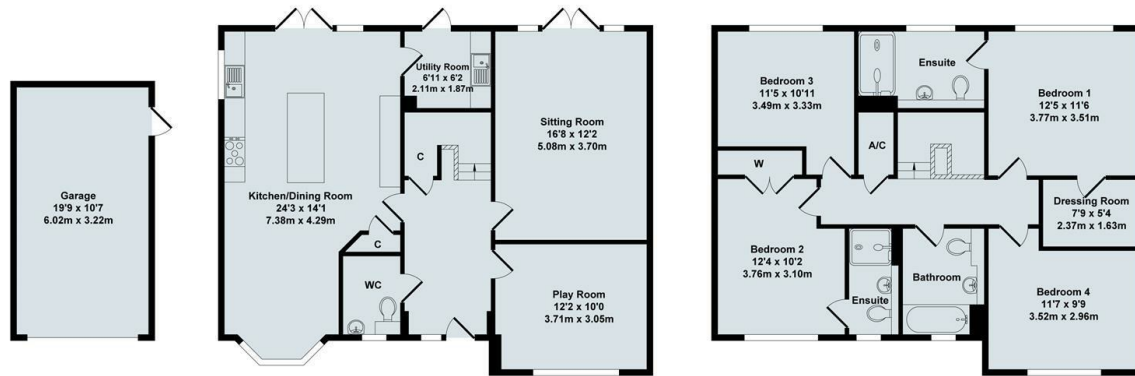
Ground Floor

First Floor



Total Approx. Floor Area 1922 Sq.Ft. (178.60 Sq.M.)

All items illustrated on this plan are included in the "Total Approx Floor Area"



Garage

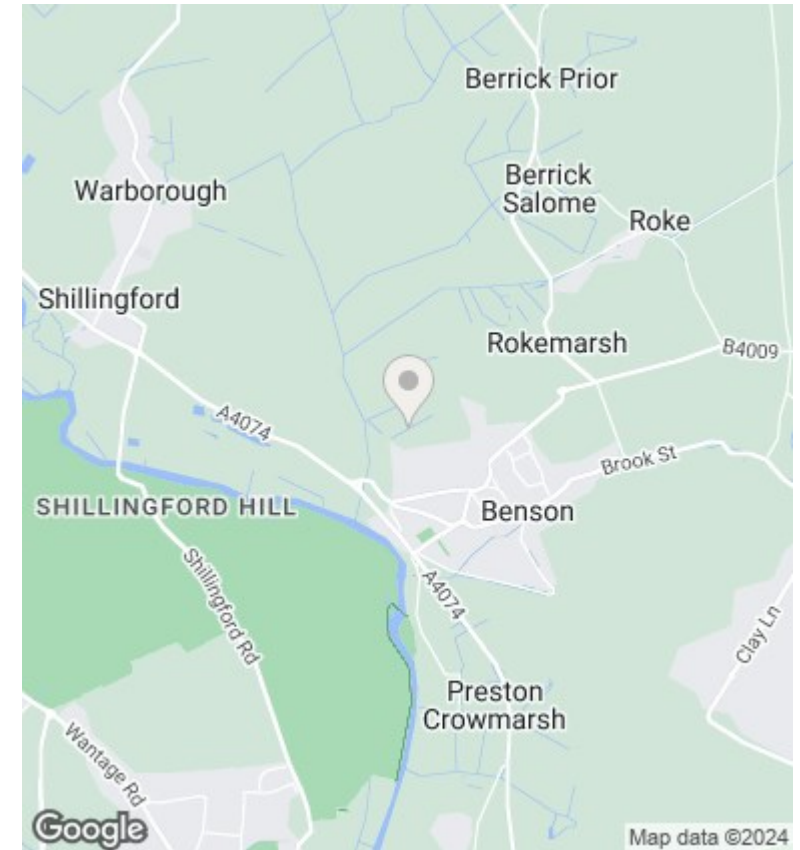
Ground Floor

First Floor



Total Approx. Floor Area 1922 Sq.Ft. (178.60 Sq.M.)

All items illustrated on this plan are included in the "Total Approx Floor Area"



Directions

Viewings

Viewings by arrangement only. Call 01235 514267 to make an appointment.

Council Tax Band

G

Energy Efficiency Rating		
	Current	Potential
<i>Very energy efficient - lower running costs</i>		
(92 plus) A		
(81-91) B		
(69-80) C		
(55-68) D		
(39-54) E		
(21-38) F		
(1-20) G		
<i>Not energy efficient - higher running costs</i>		
England & Wales	EU Directive 2002/91/EC	