



## 4 Whitebeam Court, Didcot, Oxon, OX11 6BY

£1,350 Per Month - 2nd September 2024.

- Immaculately presented two bedroom, first floor apartment
- One allocated parking space with additional visitor spaces
- Located within walking distance of local shops and amenities
- EPC Rating B Council Tax Band B.
- Fully fitted kitchen/ living room

# 4 Whitebeam Court, Didcot OX11 6BY

Immaculately presented two bedroom, first floor apartment, located in the popular Great Western Park development. Located within walking distance of local shops and amenities. Fully fitted kitchen/ living room, with gas hob, electric oven, dishwasher & fridge/ freezer. Two double bedrooms, fitted wardrobes and ensuite to bedroom one. One allocated parking space with additional visitor spaces. EPC Rating B Council Tax Band B.

The Ofcom Broadband Checker states there is:

- Ultrafast broadband has download speeds of greater than 300Mbps

When an application is agreed a holding deposit will be required of a maximum of one weeks rent



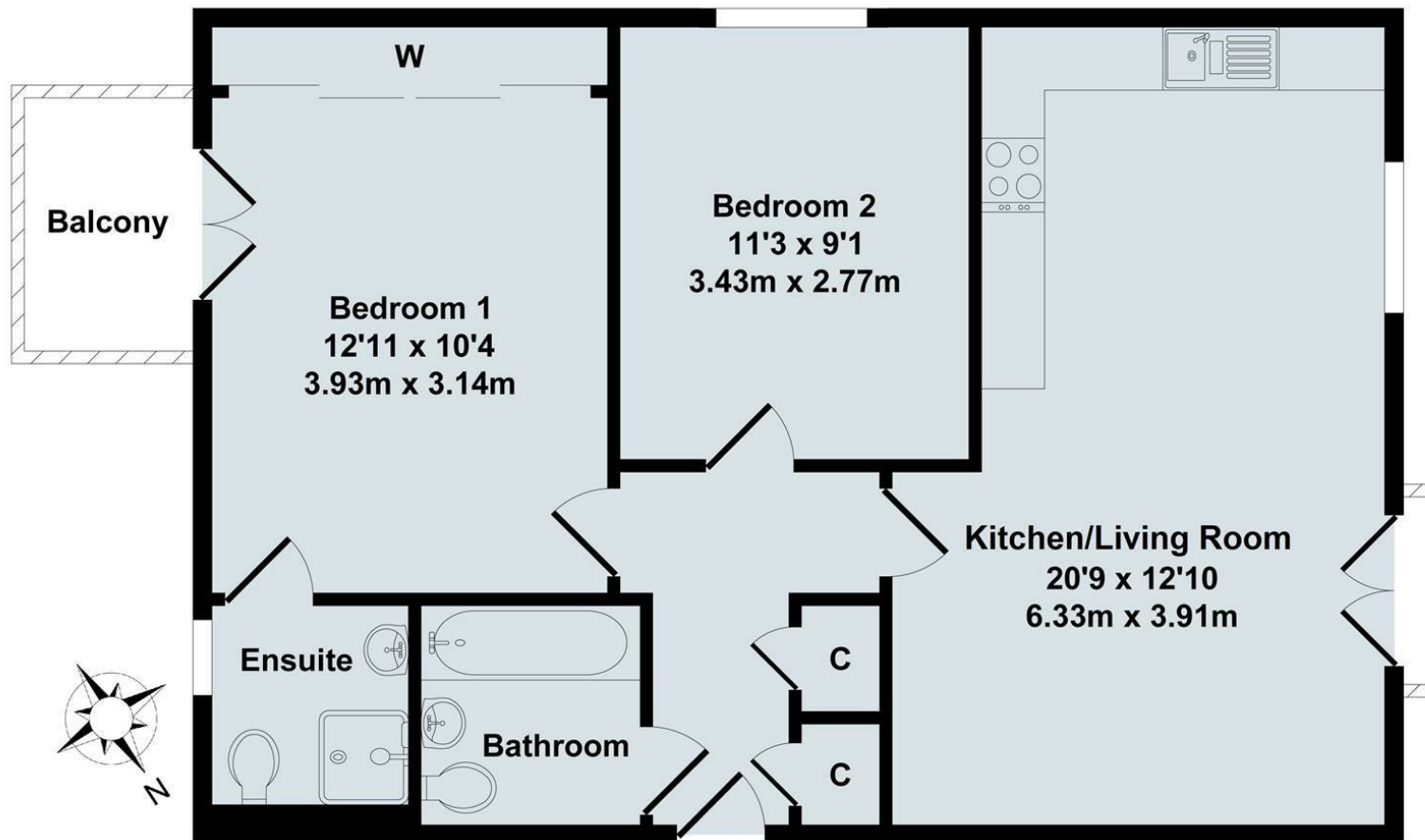
Council Tax Band: B





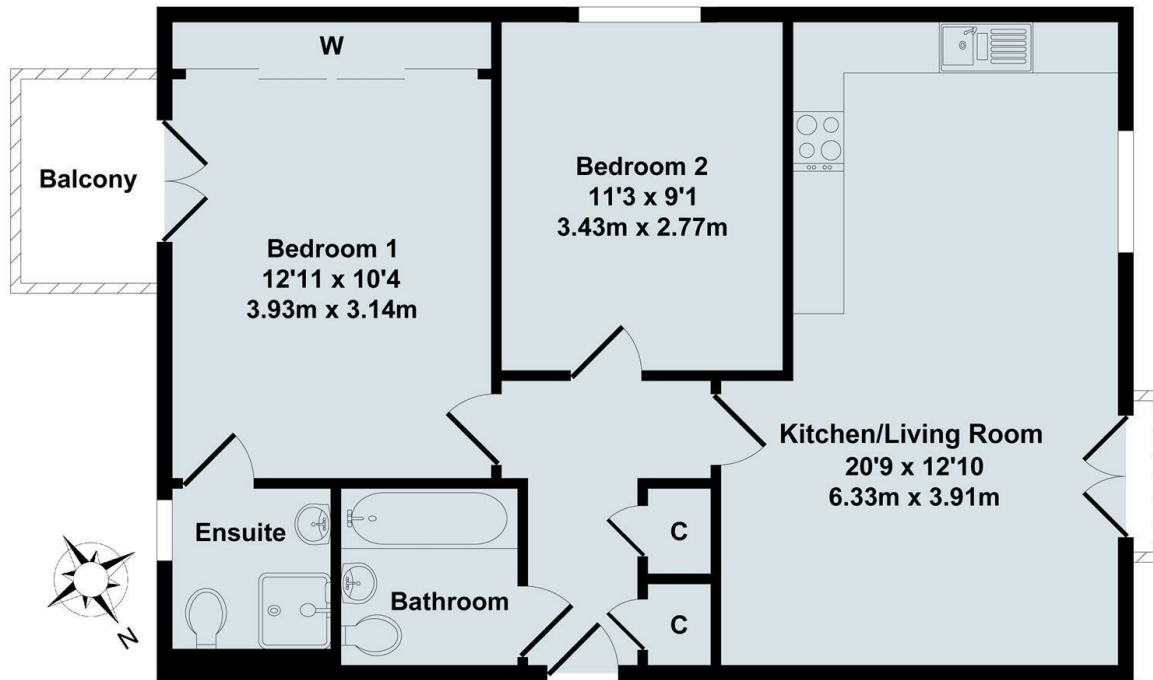




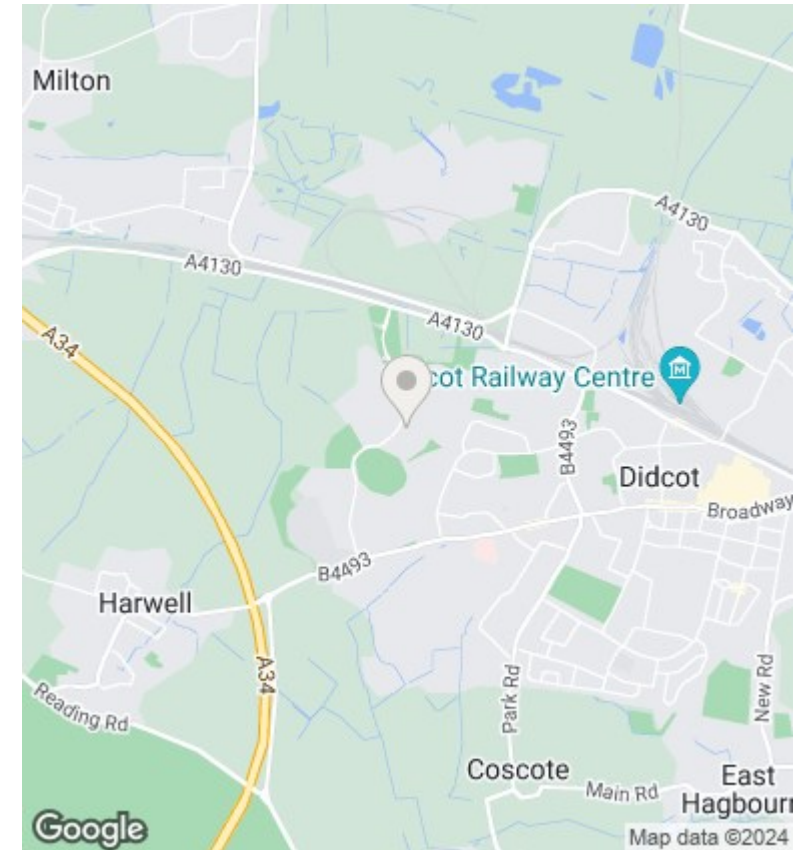


Total Approx. Floor Area 632 Sq.Ft. (58.70 Sq.M.)

All items illustrated on this plan are included in the "Total Approx Floor Area"



Total Approx. Floor Area 632 Sq.Ft. (58.70 Sq.M.)  
 All items illustrated on this plan are included in the "Total Approx Floor Area"



**Directions**

**Viewings**

Viewings by arrangement only. Call 01235 514267 to make an appointment.

**Council Tax Band**

B

Energy Efficiency Rating		
	Current	Potential
<i>Very energy efficient - lower running costs</i>		
(92 plus) <b>A</b>		
(81-91) <b>B</b>		
(69-80) <b>C</b>		
(55-68) <b>D</b>		
(39-54) <b>E</b>		
(21-38) <b>F</b>		
(1-20) <b>G</b>		
<i>Not energy efficient - higher running costs</i>		
<b>England &amp; Wales</b>	EU Directive 2002/91/EC	