



Hindley Street, Ashton-Under-Lyne, OL7 0BX

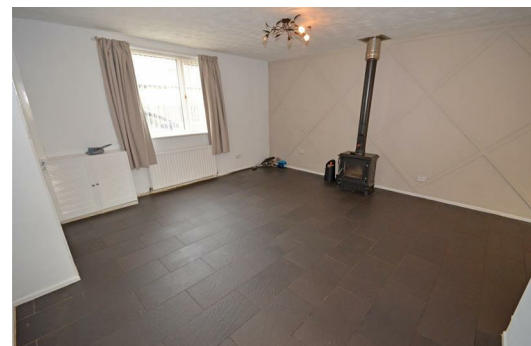
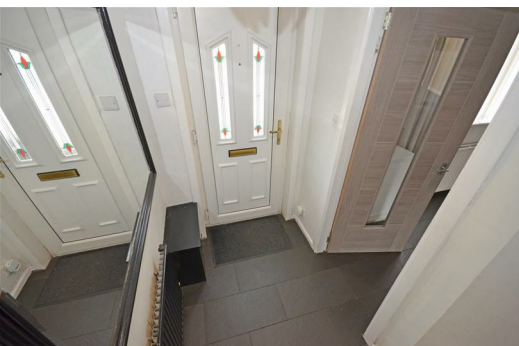
Price £195,000

****NO CHAIN**** Nestled in a quiet yet convenient cul-de-sac in Guide Bridge, Ashton under Lyne, this three-bedroom detached home offers spacious family accommodation in ready-to-move-in condition.

Located just off Ryecroft Street, the well-designed layout welcomes you with an inviting entrance hallway leading to a light and airy living room, which features a charming Harmony 23 wood burner, creating a cozy atmosphere for family gatherings. The living room seamlessly opens into the dining room, ideal for entertaining, and extends further into a fantastic-sized conservatory that floods the space with natural light. The fitted kitchen, equipped with ample storage and worktop space, completes the ground floor. Upstairs, the property boasts three generously sized bedrooms, each offering a peaceful retreat for rest and relaxation. The contemporary four-piece bathroom, complete with a luxurious jacuzzi bath, provides a spa-like experience within the comfort of your home.

********Outside, the property boasts a rear garden with direct access to a large double garage (approximately 7m x 5m), with power, offering ample storage and ideal for those working from home, the property offers a comfortable and adaptable living space and a parking space and ********

Additionally, the home is equipped with CCTV, fully double glazed, and centrally heated, ensuring security and comfort year-round. An early viewing is highly recommended to fully appreciate this delightful property!



GROUND FLOOR

Entrance Hall

Door to front, stairs leading to first floor, door leading to:

Lounge

15'4" x 15'6" (4.67m x 4.72m)

Double glazed window to front, radiator, Harmony 23 wood burner, open plan to kitchen, open plan to:

Dining Room

7'2" x 8'8" (2.19m x 2.63m)

Radiator, sliding patio door leading to conservatory.

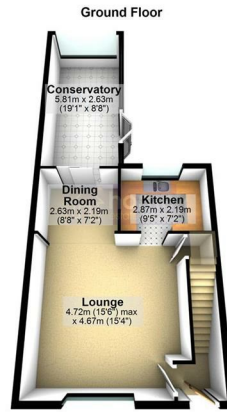
Kitchen

7'2" x 9'5" (2.19m x 2.87m)

Fitted with a matching range of base and eye level units with worktop space over, inset sink and drainer with mixer tap, tiled splashbacks, plumbing for washing machine, space for cooker, space for fridge/freezer, radiator.

Conservatory

Double glazed windows, double glazed French doors leading out to rear garden.



FIRST FLOOR

Landing

Doors leading to:

Bedroom 1

11'7" x 11'3" (3.53m x 3.42m)

Double glazed window to front, radiator.

Bedroom 2

10'4" x 8'8" (3.16m x 2.63m)

Double glazed window to rear, radiator.

Bedroom 3

11'2" x 6'10" (3.40m x 2.08m)

Double glazed window to front, radiator.

Bathroom/WC

Four piece suite comprising jacuzzi bath, shower enclosure, wash hand basin and low-level WC, heated towel rail, double glazed window to rear.

OUTSIDE

Garage

22'11" x 16'4" (7.0 x 5.0)

With power, ideal for home working

Gardens

Enclosed garden to the rear with raised seating area and access to the garage.

DISCLAIMER

