



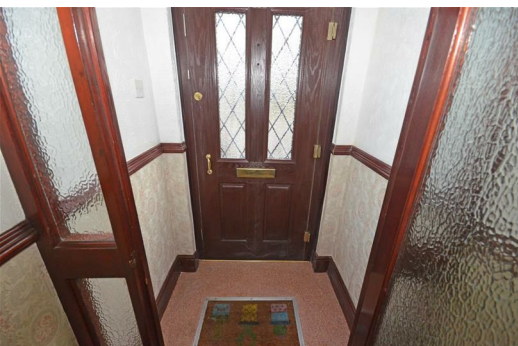
Ashton Road, Hyde, SK14 4BH

Offers in the region of £200,000

Make us an offer on this substantial family sized three bedroom two reception room mid terraced property with larger than average sized bedrooms being positioned over the ginnel, parking for two three vehicles and gardens coupled with well planned and spacious accommodation that only a full personal inspection will fully reveal.

As mentioned, the property is of a fantastic size and briefly comprises: Entrance porch, entrance hall, lounge, dining room, fitted kitchen with conservatory and cellar. To the first floor there are three double bedrooms a large three piece bathroom suite and separate WC. To the outside the property has a forecourt garden to the front, garden area to the rear with direct access to the driveway providing parking for two/three vehicles and lovely sized garden. The property is Upvc double glazed and central heated and an early viewing is advised.

Substantial Family Sized Accommodation – View Today!



GROUND FLOOR

Porch

Upvc double glazed front door, dado rail and glazed door to hall.

Hall

Stairs to the first floor, dado rail, radiator.

Lounge

11'11" x 14'9" (3.63m x 4.49m)

Upvc double glazed bay window to front, sliding doors to dining room, fitted feature fire surround with fire inset, picture rail and radiator.

Dining Room

15'7" x 16'2" (4.76m x 4.92m)

Sliding doors to lounge, Upvc double glazed window to rear fitted feature fire surround with fire inset, wall light points ceiling cornices, picture rail and radiator.

Kitchen

10'9" x 9'6" (3.27m x 2.89m)

Fitted with a matching range of base and wall units incorporating a 1 1/4 single drainer sink unit and work tops over, fitted four ring electric hob with extractor hood above and electric oven below, part tiled walls, plumbing and space for washing machine, Upvc double glazed door to the side elevation, Upvc double glazed window to the rear and space for fridge freezer.

Conservatory

Upvc double glazed, tiled floor.

Cellar

24'4" x 4'7" (7.41m x 1.40m)

Excellent storage area.

FIRST FLOOR

Landing

Dado rail, skylite window

Bedroom 1

13'11" x 15'10" (4.23m x 4.82m)

Fantastic sized room with Upvc double glazed window to rear, fitted wardrobes and radiator.

Bedroom 2

12'0" x 12'5" (3.65m x 3.78m)

Another fantastic sized room with Upvc double glazed window to front, fitted wardrobes and radiator.

Bedroom 3

12'0" x 8'11" (3.65m x 2.73m)

Upvc double glazed window to front, radiator.

Bathroom

Upvc double glazed window to rear, panelled bath separate shower cubicle with shower, pedestal wash hand basin, Upvc double glazed window to the rear and radiator.

WC

Upvc double glazed window to rear, part tiled and low level WC.

OUTSIDE

Gardens & Driveway

To the outside the property has a forecourt garden to the front, garden area to the rear with direct access to the driveway providing parking for two/three vehicles and lovely sized garden.

DISCLAIMER

Home Estate Agents believe all the particulars given to be accurate. They have not tested or inspected any equipment, apparatus, fixtures or fittings and cannot, therefore, offer any proof or confirmation as to their condition or fitness for purpose thereof. The purchaser is advised to obtain the necessary verification from the solicitor or the surveyor. All measurements given are approximate and for guide purposes only and should not be relied upon as accurate for the purpose of buying fixtures, floor-coverings, etc. The buyer should satisfy him/her self of all measurements prior to purchase.

Before we can accept an offer for any property we will need certain information from you which will enable us to qualify your offer. If you are making a cash offer which is not dependent upon the sale of another property we will require proof of funds. You should be advised that any approach to a bank, building society or solicitor before we have qualified your offer may result in legal or survey fees being lost. In addition, any delay may result in the property being offered to someone else.

