



Luscombe Maye  
Since 1873



## Court Road, Newton Ferrers

Guide Price £650,000

3 2 2





**SITUATION** Newton Lodge enjoys a quiet, elevated south facing position in this sought after valley in the unspoilt South Hams Countryside, an Area of Outstanding Natural Beauty. Newton Ferrers and Noss Mayo face one another across the River Yealm Estuary, a deep water harbour much favoured by yachtsmen. The villages share a number of facilities, including post office, Co-operative Store, pharmacy, three good public houses, two churches, yacht club with bistro and a good Primary School. Plymouth is within easy commuting distance.

**DESCRIPTION** A surprisingly spacious home, arranged on three levels. This south facing detached three/four bedroom 1950s house offers remarkable views across the estuary and woodland. The location makes it unique with its close proximity to the centre of the village with its own private footpath cutting through the beautiful gardens and grounds of Newton Court. The property benefits from a level lawned garden and terracing to the side of the property. Ample off road parking on driveway. Newton Lodge could benefit with some updating, but provides huge potential.

**FURTHER INFORMATION** As part of our transparency policy, we request our sellers fill out a Property Information Questionnaire. This information can be provided to you; however, we recommend that you verify any information given during the conveyancing process. Council tax: Band E; Tenure: Freehold; Standard Construction; Parking: Driveway. Electric; mains; Water; mains; Heating; gas; Sewerage: mains; Broadband available but not connected. Mobile signal: <https://checker.ofcom.org.uk/> Local Authority: South Hams District Council, Follaton House, Plymouth Road, Totnes TQ9 5NE. Tel: 01803 861234

Viewing: Strictly by appointment with Luscombe Maye 01752 872417

Directions: From the A379 in Yealmpton take the B3186 to Newton Ferrers. Take the first right hand turning into Court Road. The entrance to Newton Court is approximately 400 yards along Court Road on the left hand side. As you enter the driveway, take the left hand fork around the side of the building.



Newton Lodge, 25 Court Road, Newton Ferrers, PL8 1DR  
Approximate Gross Internal Floor Area = 133.1 sq m / 1433 sq ft

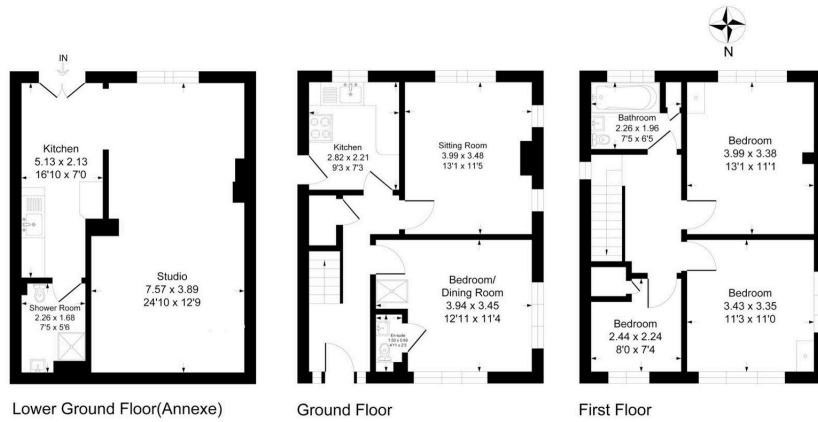
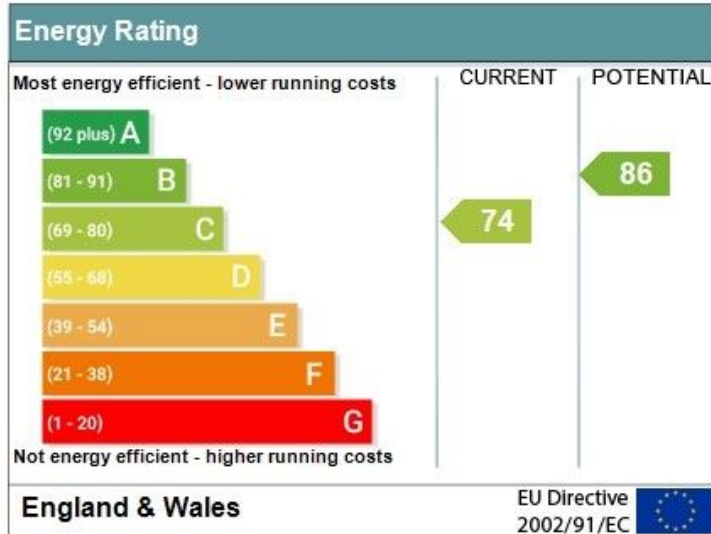


Illustration for identification purposes only, measurements are approximate, not to scale.

- Detached South Facing House
- Self Contained Apartment
- Off Road Parking
- Estuary Views
- Three/Four Bedrooms
- Terraced Garden with Lawned Area
- Development Opportunity
- No Chain

Address: Newton Lodge, 25 Court Road, Newton Ferrers, PL8 1DR  
RRN: 0370-2837-1050-2894-5745



Address: Newton Lodge Annexe, 25 Court Road, Newton Ferrers, PL...  
RRN: 0370-2337-2050-2894-5715

