




## Modbury, PL21 0SB

Guide Price £135,000

 3  2  1



- Detached Three Bedroom Lodge
- One Allocated Parking Space
- Naturally Light and Bright
- Set in 16 Acres of Gated Communal Gardens and Woodland
- Open plan Kitchen/Living Room
- Master Bedroom with Ensuite
- Private Decked Terrace & Garden
- Short Drive to Bigbury Beach
- Use of Communal Gardens, Fitness Suite and Indoor Swimming Pool
- Quiet Countryside Location



## 59 The Thatches, Modbury, PL21 0SB

Approximate Gross Internal Floor Area = 61.0 sq m / 657 sq ft

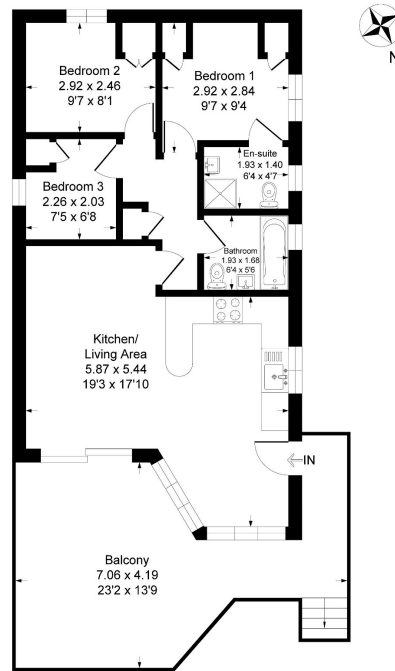


Illustration for identification purposes only, measurements are approximate, not to scale.

A beautifully presented three bedroom detached lodge set within 16 acres of communal woodland and grounds within a short drive of the nearby beach at Bigbury-On-Sea and the bustling town of Modbury.