



Luscombe Maye

Since 1873

Riverwood, Staverton

Guide Price £535,000

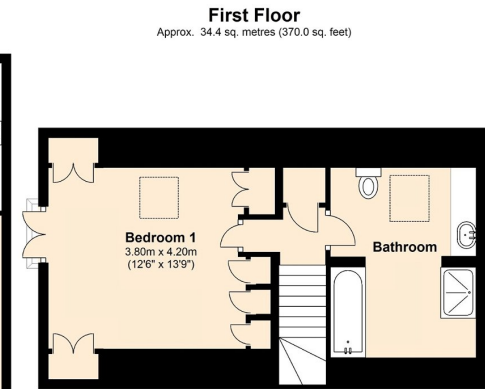
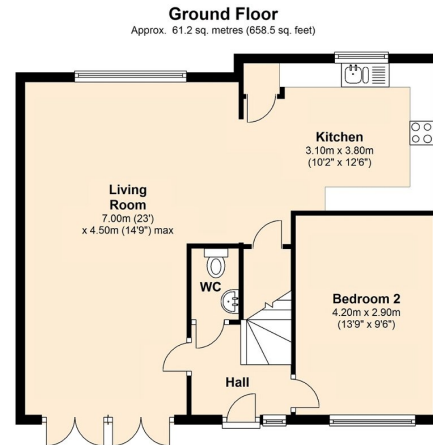
🛏️ 2 🚿 1 🚗 1

- End Terrace House
- Two Double Bedrooms
- Family Bathroom and Downstairs W.C
- Driveway Parking for Two Cars
- Great Access to Walking/Cycling Paths
- Open Plan Lounge/Kitchen/Diner
- Separate Studio/Third Bedroom
- Rear Garden
- Idyllic Countryside Location



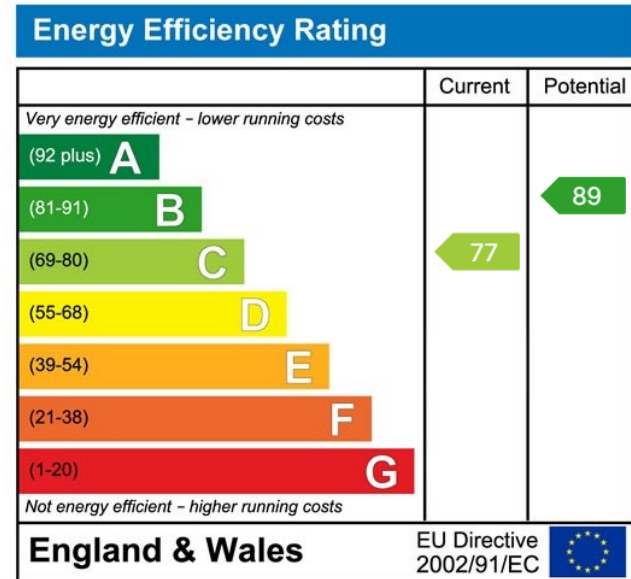
| End Terrace House | Open Plan Lounge/Kitchen/Diner | Two Double Bedrooms | Separate Studio/Third Bedroom | Family Bathroom and Downstairs W.C | Rear Garden | Driveway Parking for Two Cars | Idyllic Countryside Location | Great Access to Walking/Cycling Paths |





Total area: approx. 95.5 sq. metres (1028.5 sq. feet)

2 Riverwood, Staverton, Totnes



Important Notice: Luscombe Maye gives notice that: 1. These particulars do not constitute an offer or contract or part thereof. 2. All descriptions, photographs and plans are for guidance only and should not be relied upon as statements or representations of fact. All measurements are approximate and not necessarily to scale. Any prospective purchaser must satisfy themselves of the correctness of the information within the particulars by inspection or otherwise. 3. Luscombe Maye does not have any authority to give any representations or warranties whatsoever in relation to this property (including but not limited to planning/building regulations), nor can it enter into any contract on behalf of the Vendor.