



Luscombe Maye
Since 1873

Bridgetown Court, Totnes

Guide Price £400,000

🛏 4 🚿 2 🛋 2



DESCRIPTION

Luscombe Maye are delighted to bring to market this charming four bedroom terrace home in the heart of Totnes Town. The property is beautifully presented and provides spacious accommodation, rear patio and parking.

Entering into the property, the hallway leads to the principal rooms. Situated at the front of the property, the living room is complemented by a bay window allowing for natural light to fill the room and electric fire place. The kitchen/dining room comprises an electric oven with space for dishwasher, washing machine, fridge and freezer, and family dining table. The conservatory offers a lovely additional space to socialise and relax, that also benefits from a downstairs bathroom.

Ascending the stairs, the master bedroom is generous in size with two further double bedrooms that are light and airy. The fourth bedroom would fit a single bed but is currently utilised as a study. The family bathroom is fitted with WC, hand basin and shower.

Outside, the property benefits from an enclosed patio area bordered by mature plants and shrubs with access into the rear court where you can find the allocated parking space.

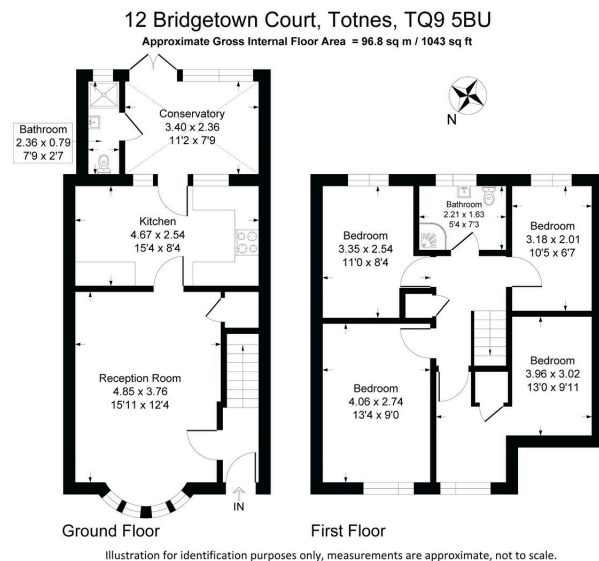
FURTHER INFORMATION

To ensure legal compliance, we require our sellers to complete a Property Information Questionnaire or provide a Material Information Guide along with the title document. If available, please scan the QR code or access the additional online material information (<https://moverly.com/sale/2CeNAWAKPXnu6SJxvBkJWT/view>) . Alternatively, you can contact our team for this information.

All information is provided without warranty. Contains HM Land Registry data © Crown copyright and database right 2021. This data is licensed under the Open Government Licence v3.0.

The information contained is intended to help you decide whether the property is suitable for you. You should verify any answers which are important to you with your property lawyer or surveyor or ask for





- No Forward Chain
- Terrace House
- Four Bedrooms
- Allocated Parking Space
- Level Walk into Totnes Town
- Conservatory & Rear Patio
- Light & Airy Accommodation
- Highly Sought After Location
- Far Reaching Countryside Views
- Immaculately Presented Throughout

