



Luscombe Maye
Since 1873

Gateways, Broadhempston

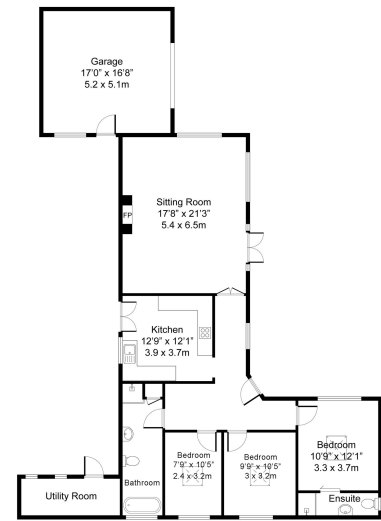
Guide Price £565,000

🛏 3 🚿 2 🚻 1



- Detached Bungalow
- Newly Modernised
- Open Plan Living
- Double Garage
- Centre of Village Location
- Three Double Bedrooms
- Private Gated Driveway
- Front Garden & Rear Courtyard





Total area 139 Sq.m (1496 Sq.ft) Approx
(Excluding Garage)

NB. This Floor Plan is for illustrative purposes only, all dimensions are approximate.

Detached Bungalow | Centre of Village Location | Newly
Modernised | Three Double Bedrooms | Open Plan Living |
Private Gated Driveway | Double Garage | Front Garden & Rear
Courtyard

