



Luscombe Maye
Since 1873

Dairy Close, Berry Pomeroy, Totnes

£475,000

🛏 3 🚿 1 🛋 2



- No Forward Chain
- Open Plan Kitchen/Diner
- Secluded Rear Garden
- Garage
- Countryside Views
- Detached Three Bedroom House
- South Facing Position
- Driveway Parking
- Spacious Plot
- Walking Distance to Totnes Town



No Forward Chain | Council tax band: D
Electricity supply: Mains electricity
Water supply: Mains water supply
Sewerage: Mains
Broadband: FTTP (Fibre to the Premises)
Mobile coverage: O2 - Good, Vodafone - Good, Three - Good, EE - Good
Energy Performance rating: B

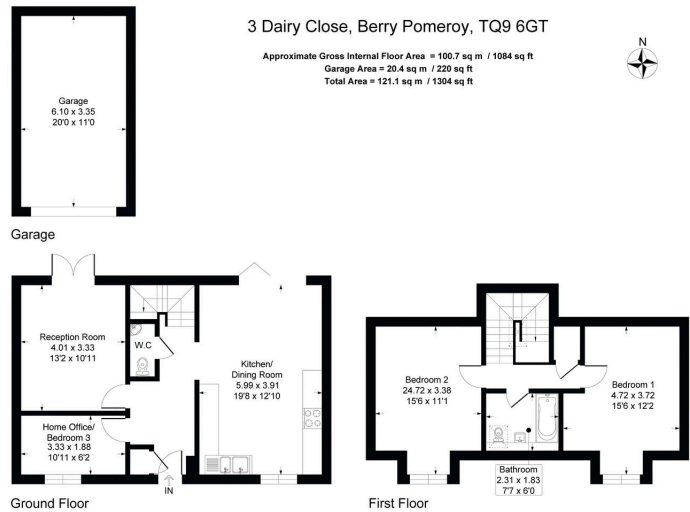
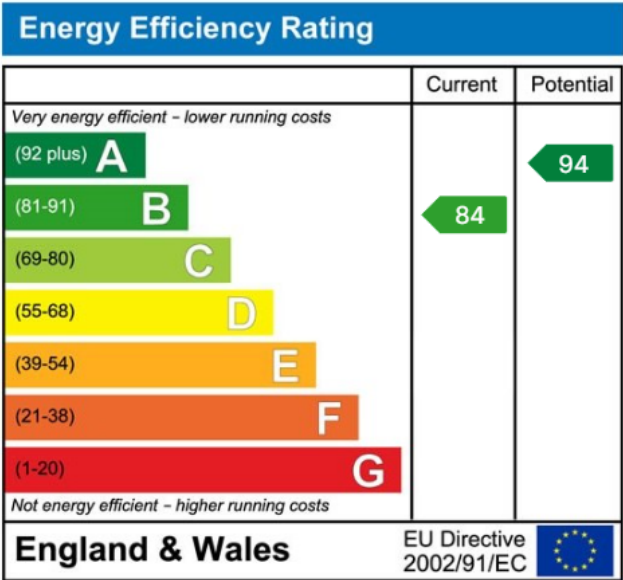


Illustration for identification purposes only, measurements are approximate, not to scale.



Yealmpton:
The Old Bakery, Market Street, Yealmpton PL8 2EA
01752 880044
yealmpton@luscombemaye.com
www.luscombemaye.com