



Luscombe Maye
Since 1873

Elmhirst Lodge, Station Road, Totnes

Guide Price £350,000

🛏 1 🚿 1 🚿 1



DESCRIPTION

Luscombe Maye are delighted to bring to market this charming one bedroom, garden flat at Elmhirst Lodge Retirement Living.

Entering into the property, the living room is light and airy and opens onto the private patio area. The contemporary kitchen is fitted with electric oven, induction hob, washer/dryer machine, sink and fridge/freezer.

The double bedroom is generous in size with a large walking in wardrobe, perfect for storage and is serviced by the modern tiled bathroom fitted with WC, hand basin and walk-in shower.

The new owner can benefit from Elmhirst Lodge amenities, which includes a communal landscaped garden, lounge with coffee bar, guest suite for friends and family as well as the 24 hour call centre support system.

FURTHER INFORMATION

Verified material information - see QR code for further details.

All information is provided without warranty. Contains HM Land Registry data © Crown copyright and database right 2021. This data is licensed under the Open Government Licence v3.0.

The information contained is intended to help you decide whether the property is suitable for you. You should verify any answers which are important to you with your property lawyer or surveyor or ask for quotes from the appropriate trade experts: builder, plumber, electrician, damp, and timber expert.

DIRECTIONS

What3Words - worlds.thin.wiggling



10 Elmhirst Lodge, Station Road, Totnes, TQ9 5NS

Approximate Gross Internal Floor Area = 50.5 sq m / 544 sq ft

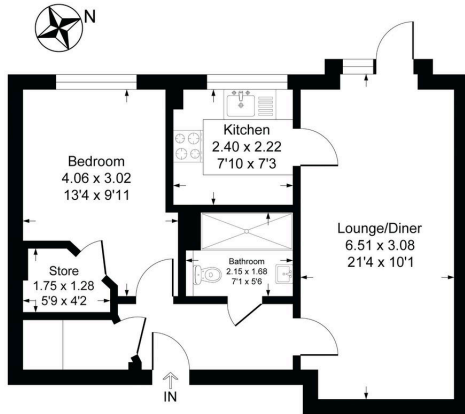


Illustration for identification purposes only, measurements are approximate, not to scale.

- No Forward Chain
- Exclusively For The Over 60's
- Secure Door Entry System
- Lodge Manager To Assist With The Daily Running Of The Lodge
- Landscaped Grounds
- Ground Floor Apartment with Patio =Area
- Owners' Lounge & Coffee Bar With Communal Wi-Fi
- 24 Hour Support System
- Fitted Kitchen With Fridge And Freezer

