



Luscombe Maye
Since 1873

Church Close, Totnes

Offers In Region Of £315,000

🛏 2 🚿 1 🚿 1



DESCRIPTION

Luscombe Maye are delighted to bring to market this charming two bedroom ground floor apartment situated in a tranquil historical close just 50 yards off the high street.

Entering into the property, the open plan living, kitchen and dining room is complemented by large sash windows and high ceilings, exposed stone walls and original fireplaces. The bespoke kitchen is fitted with ample worktop space, oven with gas hob, sink and dishwasher. The two double bedrooms enjoy built-in wardrobes and both are serviced by the family bathroom fitted with WC, hand basin and corner shower unit. The property retains original features throughout, and features a Grade II Listed facade, facing St Mary's Churchyard.

Outside, the property enjoys a west facing patio area with storage and covered veranda with bath feature.

FURTHER INFORMATION

Verified material information - see QR code for further details.

DIRECTIONS

What3Words - hoot.bridges.shook



Tudor Cottage, 8 Church Close, Totnes, TQ9 5QQ
Approximate Gross Internal Area = 54.49 sq m / 587 sq ft

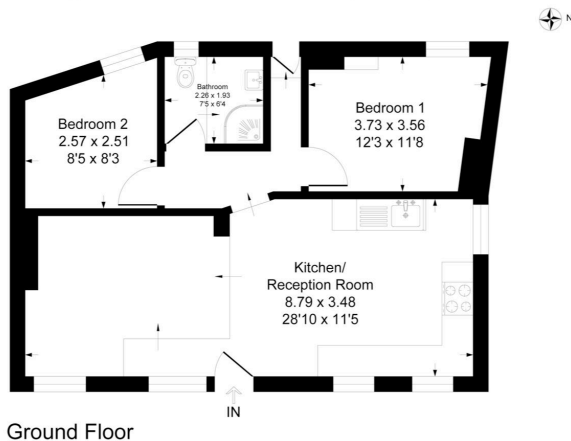


Illustration for identification purposes only, measurements are approximate, not to scale.

- Town Centre Apartment
- Open Plan Living
- Grade II Listed
- Ground Floor
- Low Maintenance
- Two Double Bedrooms
- Characterful Original Features
- Private Patio
- Private Entrance

