



Luscombe Maye
Since 1873

Warland, Totnes

Guide Price £500,000

🛏 4 🚿 2 🛋 2



DESCRIPTION

Luscombe Maye are delighted to bring to market The Forge, a well presented four bedroom terrace property situated in the centre of Totnes town, with versatile accommodation and low maintenance outside space.

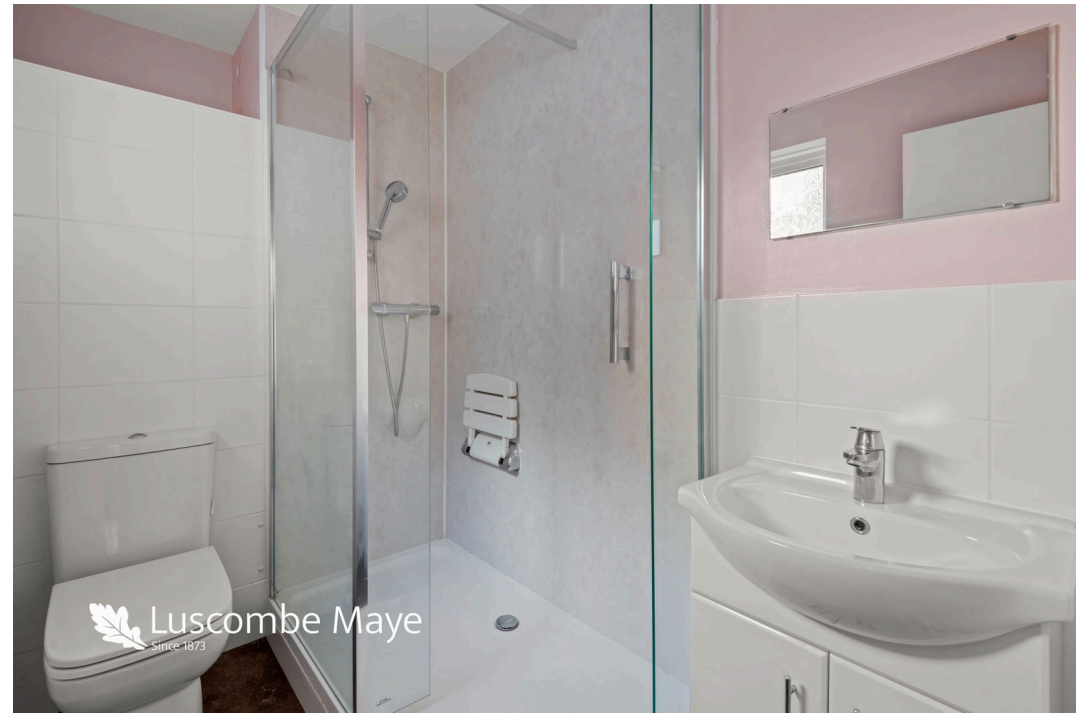
Entering the property, the hallway leads to the dining area situated in the heart of the property. The kitchen area benefits from ample matching floor to wall units and has space for a double oven, hob, dishwasher and double sink. The living room is complimented by large windows, store room and electric fire. There is also a versatile downstairs double bedroom that is light and airy with built in wardrobes. To complete the downstairs accommodation, there is a three piece bathroom and external door the the rear patio.

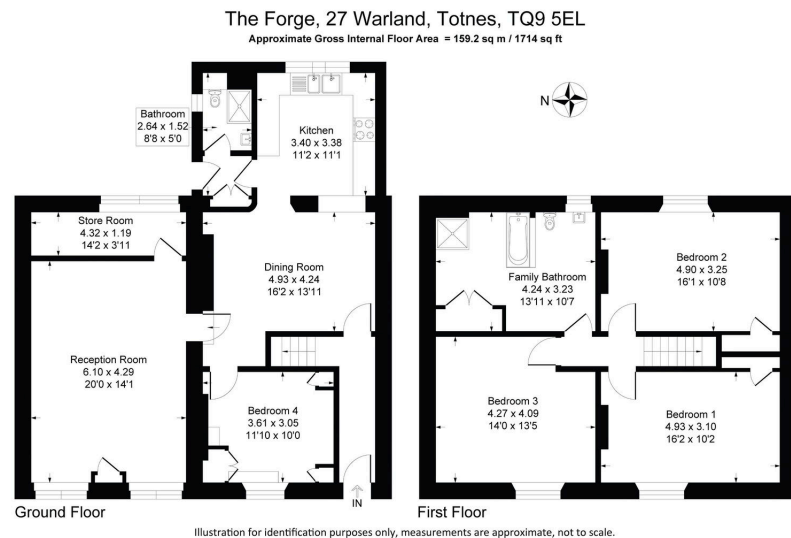
Ascending the stairs, there are three generous in size double bedrooms, all complimented by period feature fireplaces and large windows allowing natural light to fill the room. The family bathroom is fitted with walk-in shower, bath, WC and hand basin.

The property is situated in the heart of Totnes, on the level and walking distance to the high street. At the rear of the property is a patio area that could potentially be utilised as a parking space. Resident parking permits available.

TOTNES

The unique and charming market town of Totnes sits above the River Dart in the heart of the South Hams. The town is one of Devon's gems, the birthplace of the Transition Town movement in England and nominated in British Airways' HighLife magazine as one of the world's top ten funky towns. Full of colour and character, its atmosphere is cosmopolitan with a West Country flavour and those looking for history, alternative therapies and beautiful countryside will find it in and around Totnes. The town is said to have more listed buildings per head of the population than anywhere else in Britain. With a twice-a-week market and full of small independent shops, it's well-known for ethical products, wholefoods and fair trade goods. It is the second oldest borough in England, with an ancient Guildhall





- No Forward Chain
- Terrace Property
- Four Double Bedrooms
- Walking Distance to Totnes High Street
- Highly Sought After Location
- Ground Floor Double Bedroom
- Versatile Accommodation
- EPC D

