



Luscombe Maye  
Since 1873



# Leechwell Street, Totnes

Guide Price £500,000

3 1 2



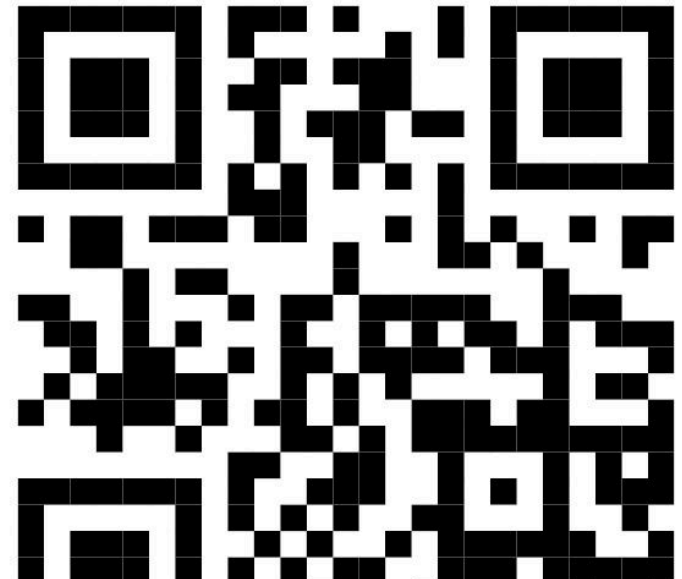


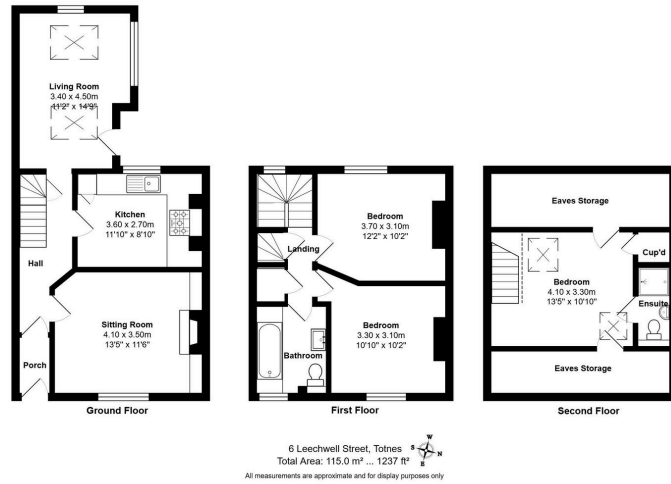
**DESCRIPTION** Luscombe Maye are delighted to bring to market this charming Grade II Listed, three bedroom terrace home in the heart of Totnes Town. The property is beautifully presented across three floors, providing spacious and versatile accommodation that has been tastefully designed to enhance the period features throughout. Situated at the front of the property, the dining room is complimented by period features such as the sash window, picture rails and original fireplace. The kitchen comprises Rangemaster, sink drainer unit overlooking the rear patio with space for dishwasher, fridge/freezer and washing machine. The newly renovated living room enjoys Velux windows, feature stone wall and doors opening on to the terraced patio. The first floor landing leads to two bedrooms and the family bathroom. The double bedrooms both enjoy large sash windows and original feature fireplaces. The family bathroom is fitted with hand basin, WC and bath with shower above. Ascending the second set of stairs, the master bedroom has dual aspect Velux windows, ample under eaves storage and an ensuite fitted with WC, hand basin and shower. At the rear of the property, the tiered, west facing patio is bordered by mature shrubs and trees with ample space for outdoor table and chairs. Although there is no allocated parking, a residents permit is currently only £35pa.

**FURTHER INFORMATION** see QR code for further details.



 **Luscombe Maye**  
Since 1873





- Terraced House
- Grade II Listed
- Three Double Bedrooms
- Tiered Rear Patio
- Highly Sought After Location
- Separate Dining Room
- Recently Refurbished Throughout
- Walking Distance to Totnes High Street
- Period Features Throughout

