



Luscombe Maye
Since 1873

Limberland Avenue, Dartington

Offers Over £285,000

🛏 2 🚿 2 🛋 1



DESCRIPTION

Luscombe Maye are delighted to bring to market this beautifully presented two bedroom terrace property situated in a cul-de-sac in the sought after village of Dartington. The property was Built by Cavanna Homes with circa 2 years remaining of the NHBC warranty and has an excellent 'B' EPC rating.

Set back from the road, there is a footpath and front garden leading to front door. Downstairs comprises a light and airy reception room off the entrance hall and leads in to the open plan kitchen/diner that enjoys doors opening out to the rear garden. The kitchen comprises matching wall and floor units and has space for washing machine, fridge/freezer and integrated oven with four-ring gas hob. There is also room for a dining table set, perfect for when hosting friends and family alike. There is also an under stair cupboard space available and downstairs WC.

Stairs ascend to the first floor accommodation and access the two ensuite bedrooms. Both double bedrooms are generous in size and benefit from ensuite bathrooms with bedroom two enjoying views over the garden. There is also a large storage cupboard on the landing.

Outside, the rear patio garden is bordered mature shrubs and plants with space for outdoor garden furniture. There is rear access to the two allocated parking spaces available.

SERVICES

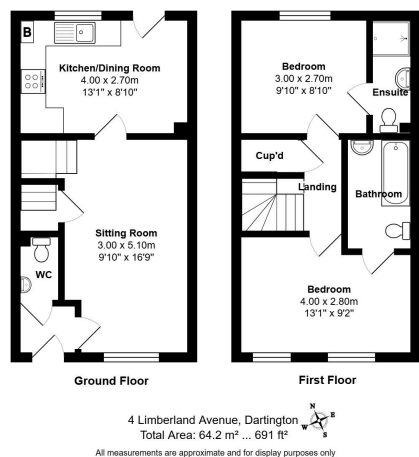
Gas central heating. Mains water, drainage and electricity connected.

LOCAL AUTHORITY

South Hams District Council. Follaton House, Plymouth Road, Totnes TQ9 5NE

Council Tax Band C





- No Forward Chain
- Two-bedroom Terrace
- Rear Garden
- EPC B
- Modern Kitchen Diner
- Two Ensuite Bedrooms
- Highly Sought After Location
- Downstairs WC
- Tastefully Decorated Throughout

