



Luscombe Maye

Since 1873

# South Street, Totnes TQ9 5DZ

£275,000

1 1 1



## DESCRIPTION

Luscombe Maye are delighted to bring to market this one-bedroom property situated in the centre of Totnes town and within walking distance to all its amenities.

Upon entering the property, the open plan kitchen diner is flooded with light from the Velux window and offers space for a family dining table and built in storage. The kitchen is home to a range of matching floor units, Belfast sink, space for a cooker and fridge, there is also plumbing for a washing machine. The living room is light and airy and leads to the upstairs accommodation.

The bedroom is of a generous size fitting a double bed, or two singles with double doors opening onto the patio and allowing for natural light throughout. The bathroom has a WC, hand wash basin and bath with shower above. The rear garden has a patio area with space for an outside dining table set and is surrounded by mature trees and shrubs. Steps lead back down to the front of the property and a roof terrace is accessible with far reaching views over Totnes.



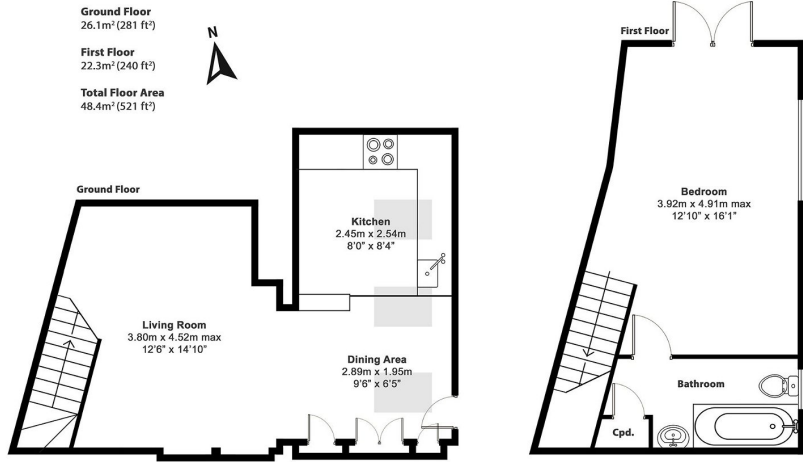
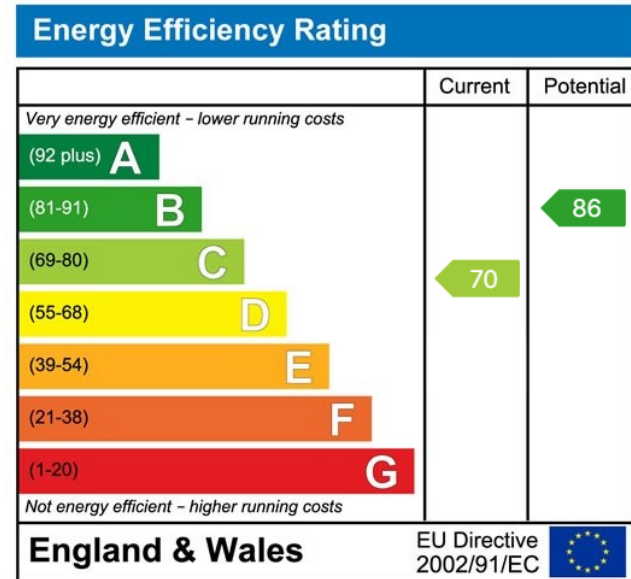


Illustration for identification purposes only, measurements are approximate, not to scale.

- Town Centre Location
- Open Plan Living
- Courtyard Garden
- Well Presented Throughout
- Council Band A



Important Notice: Luscombe Maye gives notice that: 1. These particulars do not constitute an offer or contract or part thereof. 2. All descriptions, photographs and plans are for guidance only and should not be relied upon as statements or representations of fact. All measurements are approximate and not necessarily to scale. Any prospective purchaser must satisfy themselves of the correctness of the information within the particulars by inspection or otherwise. 3. Luscombe Maye does not have any authority to give any representations or warranties whatsoever in relation to this property (including but not limited to planning/building regulations), nor can it enter into any contract on behalf of the Vendor.