



Luscombe Maye

Since 1873



# Bethel, Follaton Farm Barns, Totnes

£575,000

🛏️ 3 🚿 2 🛋️ 2



- Beautiful barn conversion
- Classic country kitchen
- Lounge with wood burner
- Far Reaching Countryside Views
- Three bedrooms
- Luxury bathroom
- Private gated driveway with parking for 3 cars





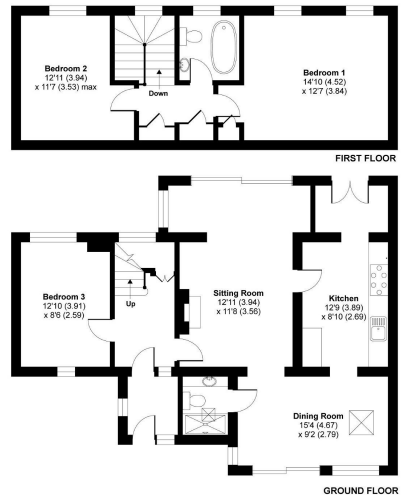
Beautiful Barn Conversion | Three Bedrooms | Classic Country Kitchen | Luxury Bathroom | Lounge With Wood Burner | Private Gated Driveway with Parking For 3 Cars | Far Reaching Countryside Views | Five Minute Drive to Train Station |



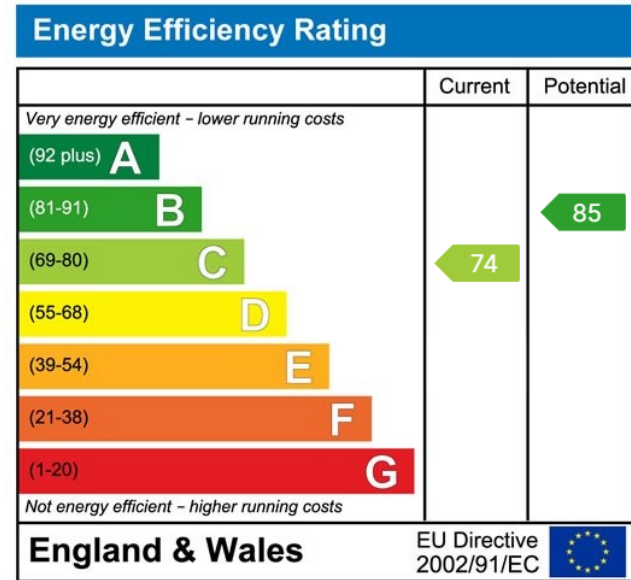
Luscombe  
Maye Since 1873

**Plymouth Road, Totnes, TQ9**

Approximate Area = 1340 sq ft / 124.5 sq m  
For identification only - Not to scale



Approved  
Energy  
Rating Floor plan produced in accordance with NICE Property Measurement Standards incorporating International Property Measurement Standards (IPMS) Residential. © 2018 Luscombe Maye. Produced by Luscombe Maye. 102 / 10/17/18



**Totnes:**  
59 Fore Street, Totnes TQ9 5NJ  
01803 869920  
totnes@luscombemaye.com  
[www.luscombemaye.com](http://www.luscombemaye.com)

Important Notice: Luscombe Maye gives notice that: 1. These particulars do not constitute an offer or contract or part thereof. 2. All descriptions, photographs and plans are for guidance only and should not be relied upon as statements or representations of fact. All measurements are approximate and not necessarily to scale. Any prospective purchaser must satisfy themselves of the correctness of the information within the particulars by inspection or otherwise. 3. Luscombe Maye does not have any authority to give any representations or warranties whatsoever in relation to this property (including but not limited to planning/building regulations), nor can it enter into any contract on behalf of the Vendor.