



Luscombe Maye

Since 1873

# Dundridge Mews, Dundridge Estate, Harberton

£450,000

🛏️ 4 🚗 3 🛋️ 2

- No Forward Chain
- Arranged Over Three Floors
- Four Double Bedrooms
- Grade II Listed
- Idyllic Communal Grounds
- Garage & Parking

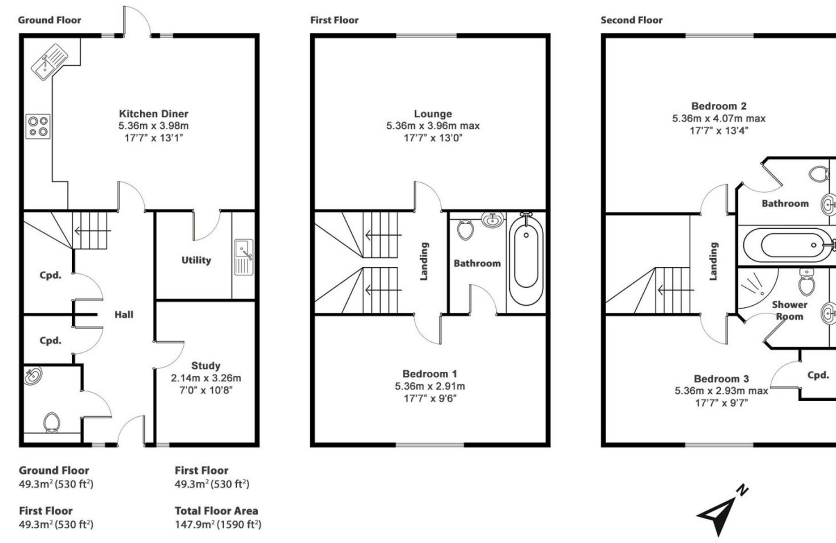


| No Forward Chain | Arranged Over Three Floors | Four Double Bedrooms | Grade II Listed | Idyllic Communal Grounds | Garage & Parking |

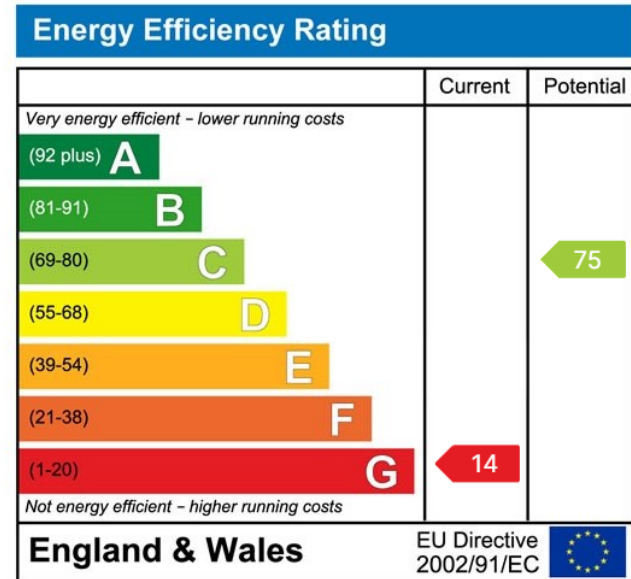




**Luscombe  
Maye** Since 1873



**Luscombe  
Maye** Since 1873



Important Notice: Luscombe Maye gives notice that: 1. These particulars do not constitute an offer or contract or part thereof. 2. All descriptions, photographs and plans are for guidance only and should not be relied upon as statements or representations of fact. All measurements are approximate and not necessarily to scale. Any prospective purchaser must satisfy themselves of the correctness of the information within the particulars by inspection or otherwise. 3. Luscombe Maye does not have any authority to give any representations or warranties whatsoever in relation to this property (including but not limited to planning/building regulations), nor can it enter into any contract on behalf of the Vendor.

**Luscombe  
Maye** Since 1873

**Totnes:**  
 59 Fore Street, Totnes TQ9 5NJ  
 01803 869920  
 totnes@luscombemaye.com  
 www.luscombemaye.com