




8 Sawfield Drive, Sawmills, Dartington

 3  2  2

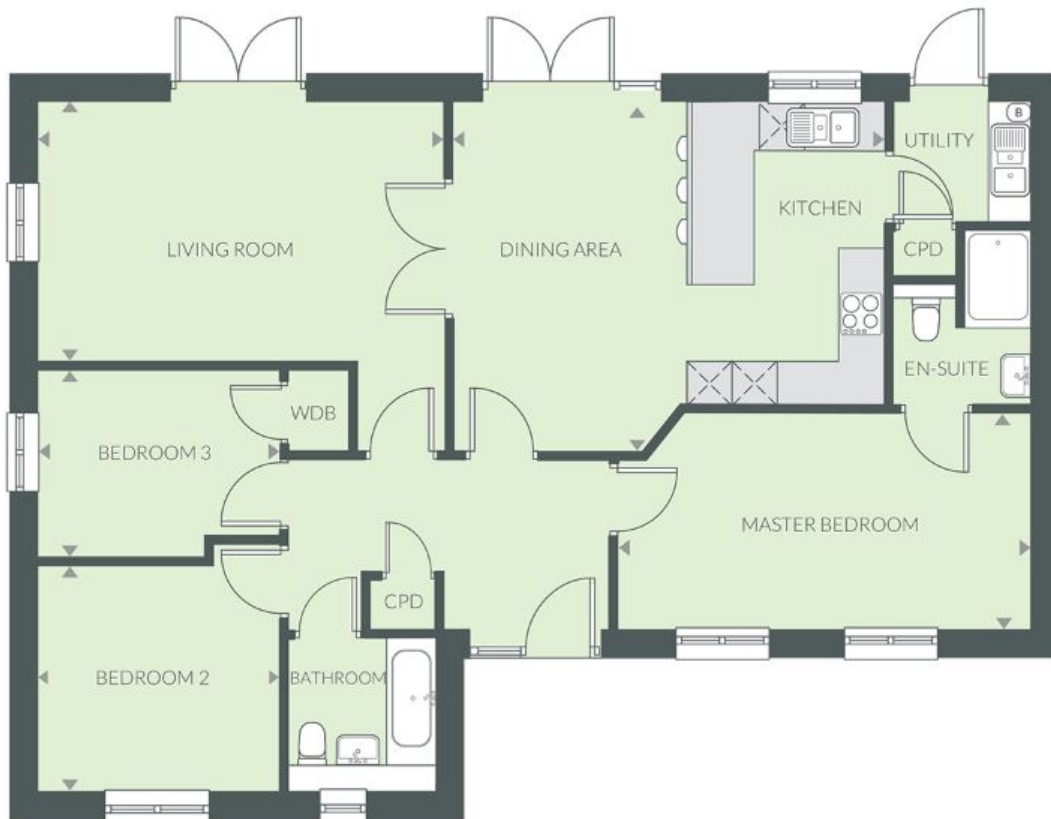




Luscombe Maye

Since 1873

- Last Bungalow Available!
- Predicted EPC A
- Ensuite Master Bedroom
- Double Garage
- Plot 19
- New Build Property / Open Plan Kitchen/ Diner
- Flooring and Quartz Worktop Included
- Gated Private Driveway
- Electric Car Charging Point & Solar Panels



Important Notice: Luscombe Maye gives notice that: 1. These particulars do not constitute an offer or contract or part thereof. 2. All descriptions, photographs and plans are for guidance only and should not be relied upon as statements or representations of fact. All measurements are approximate and not necessarily to scale. Any prospective purchaser must satisfy themselves of the correctness of the information within the particulars by inspection or otherwise. 3. Luscombe Maye does not have any authority to give any representations or warranties whatsoever in relation to this property (including but not limited to planning/building regulations), nor can it enter into any contract on behalf of the Vendor.

 **Luscombe
Maye** Since 1873

Totnes:
59 Fore Street, Totnes TQ9 5NJ
01803 869920
totnes@luscombemaye.com
www.luscombemaye.com