



## Carriage House, Plompton

Knaresborough

Guide Price £1,100,000



MYRINGS





## Carriage House

Plompton, Knaresborough

Carriage House is a beautiful Grade II Listed, 4 bedroom, stone built home, designed by Harewood house architect, John Carr, forming part of a private residential estate located on the outskirts of Harrogate. It has undergone a complete refurbishment programme revealing tasteful interiors over three floors with Sealed unit sash windows and gas fired central heating and standing in a breathtaking landscaped walled garden.

Council Tax band: F

Tenure: Freehold

- BEAUTIFUL WALLED GARDENS
- CHARMING FEATURES
- IMPRESSIVE ORANGERY ADDITION
- IDYLIC COUNTRY SETTING
- PRESENTED TO THE HIGHEST OF STANDARDS



MYRINGS



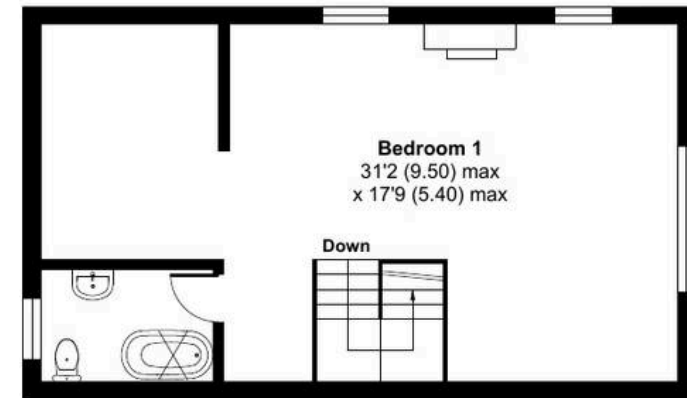
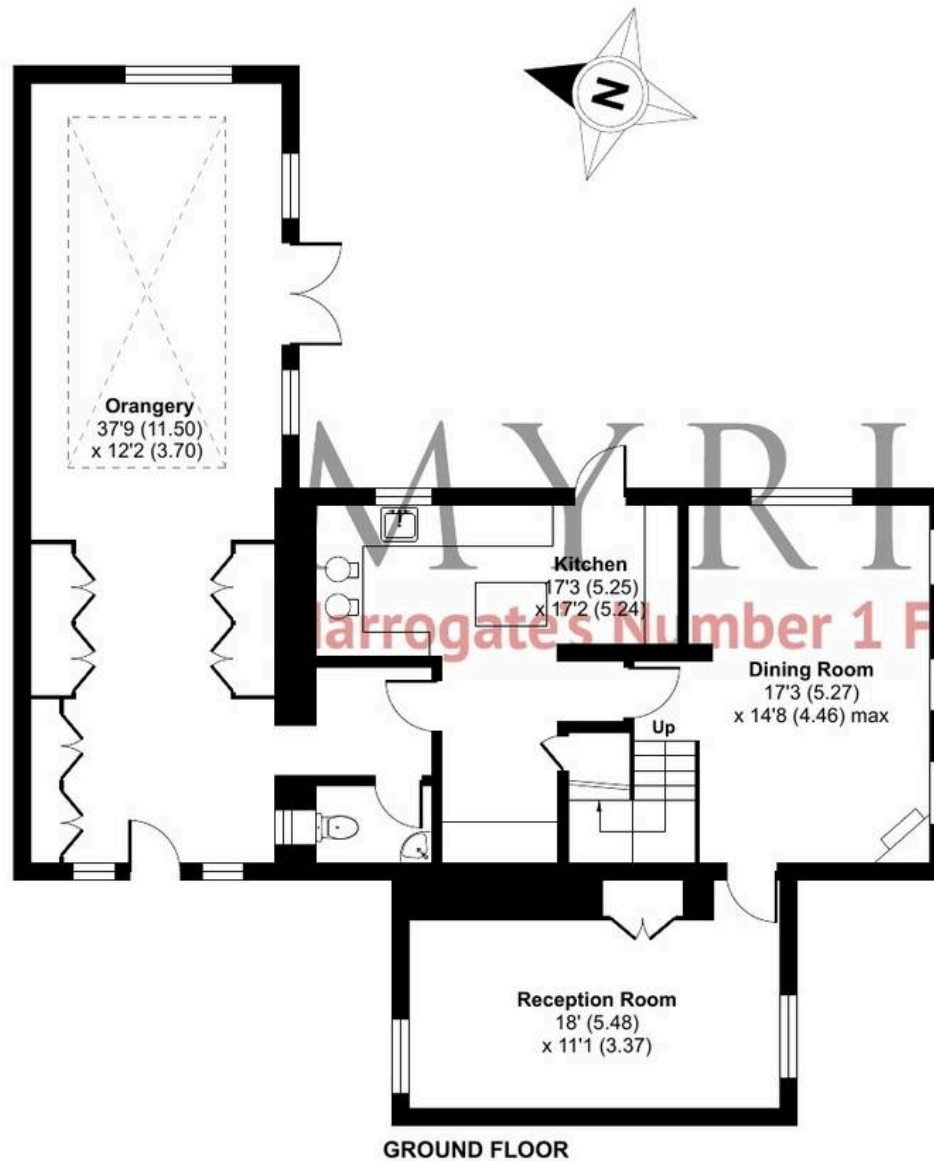




# Plompton, Knaresborough, HG5

Approximate Area = 2493 sq ft / 231.6 sq m

For identification only - Not to scale











## Myrings Estate Agents

Myrings Estate Agents Ltd, 10 Princes Square - HG1 1LX

01423

566400

▪ [enquiries@myringsestateagents.com](mailto:enquiries@myringsestateagents.com) ▪ <http://myringsestateagents.com/>

