



Sussex, Hawthorne Place, Harrogate

Harrogate

Guide Price £635,000



MYRINGS



Sussex, Hawthorne Place

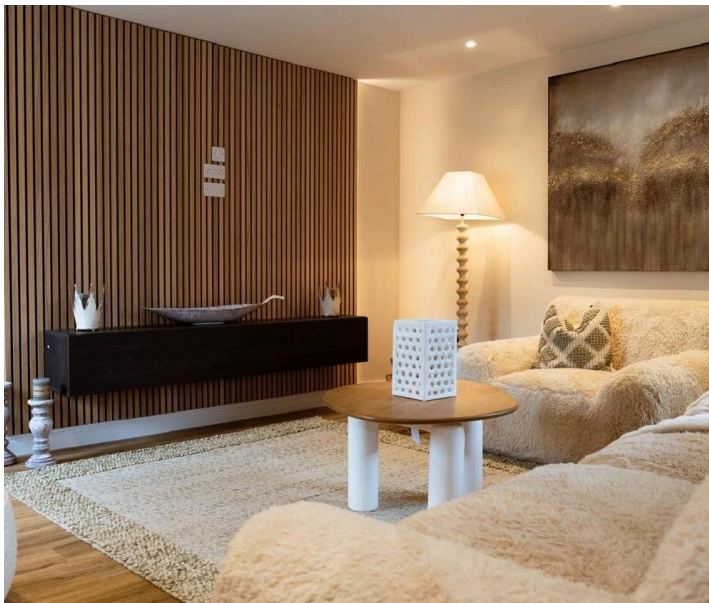
Harrogate

The Sussex is a impressive 3 bedroom newly converted house the millstone in its iconic 'round house', adding an authentic touch to this charming home. Formerly a chicken farm, The Sussex pays homage to its agricultural roots and is named after the illustrious Sussex chicken breed. Forming part of 'Kingsley Farm' an exclusive development of just 6 individual homes by the highly regarded Quarters Life situated on the edge of town for everyday amenities nearby yet within a stones throw of open countryside.

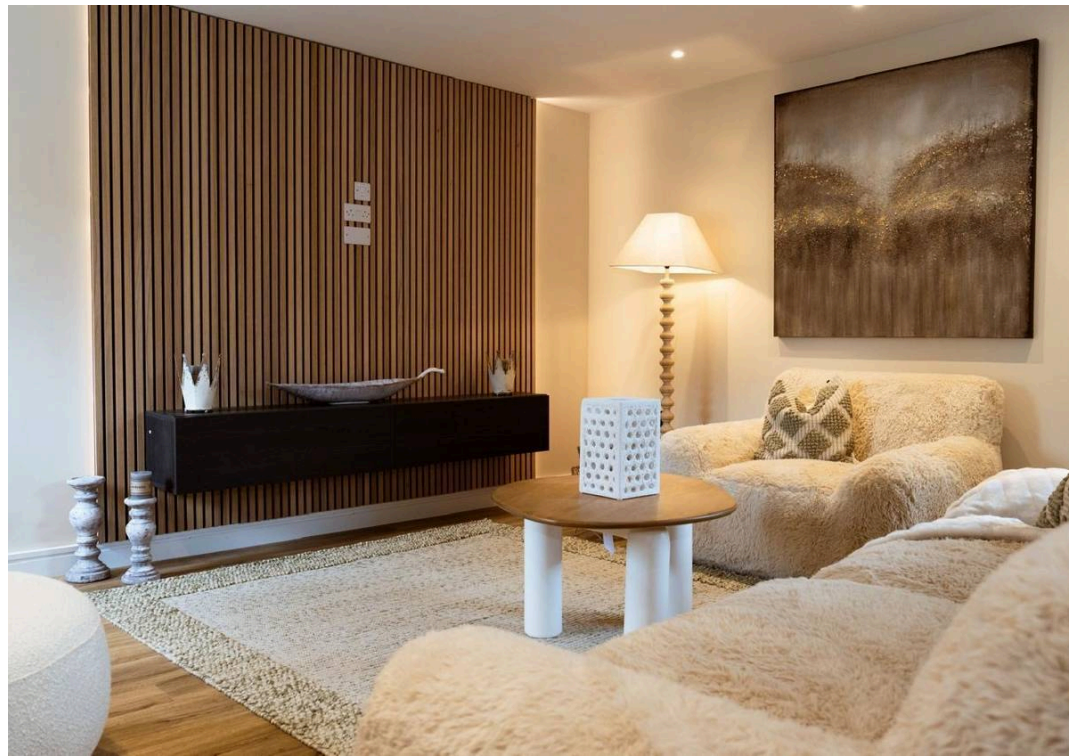
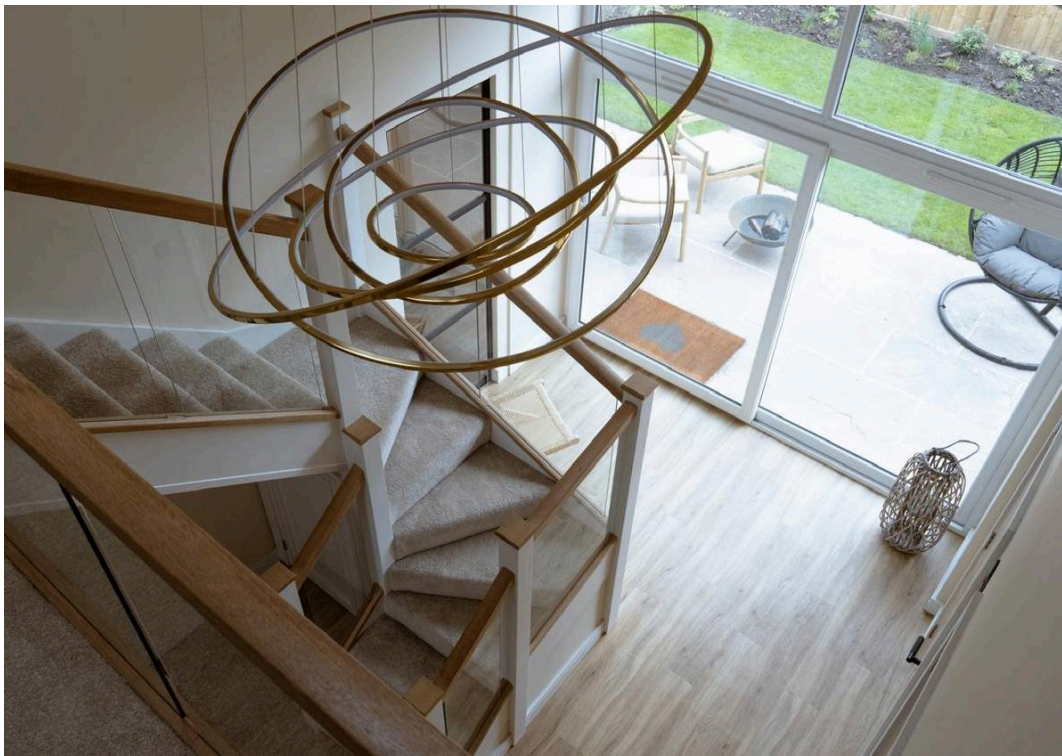
Council Tax band: TBD

Tenure: Freehold

- Large arched barn feature window
- Distinctive round living kitchen
- Cozy snug with media wall
- Private rear garden
- Block set driveway parking & EV charging point

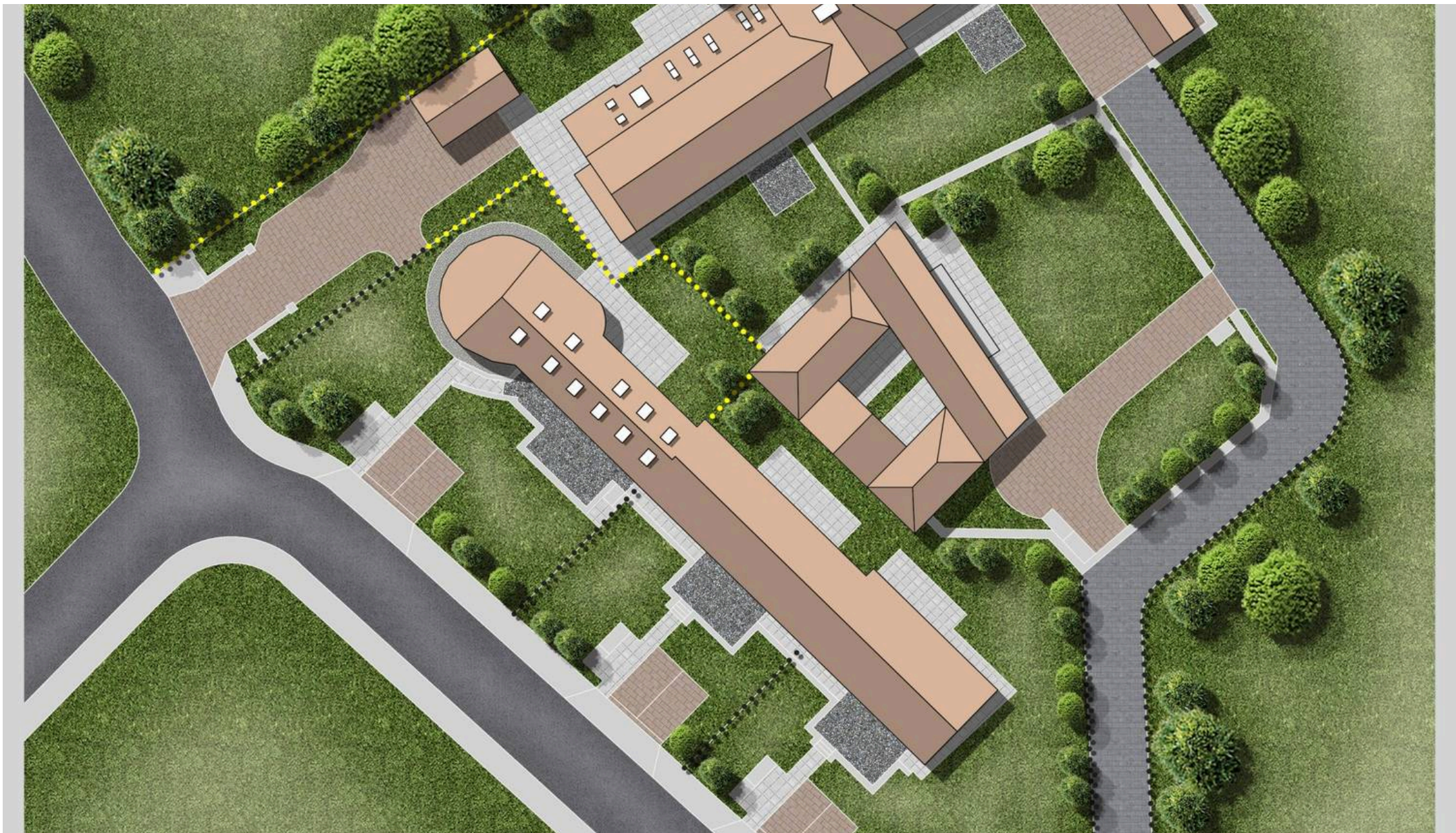


MYRINGS









Myrings Estate Agents

Myrings Estate Agents Ltd, 10 Princes Square - HG1 1LX

01423

566400

▪ enquiries@myringsestateagents.com ▪ <http://myringsestateagents.com/>

