



## 11 Matcham Grange, 42 Wetherby Road Harrogate

Guide Price £290,000



# MYRINGS





## 11 Matcham Grange

Harrogate

This beautifully presented ground-floor one-bedroom retirement apartment offers comfortable, independent living with the benefit of on-site care and support services. Situated within a well-maintained development, the property boasts a dual-aspect lounge/diner, providing a bright and airy space, with patio doors leading directly to a private patio area and the communal gardens—perfect for enjoying the peaceful surroundings.

Council Tax band: C

Tenure: Leasehold

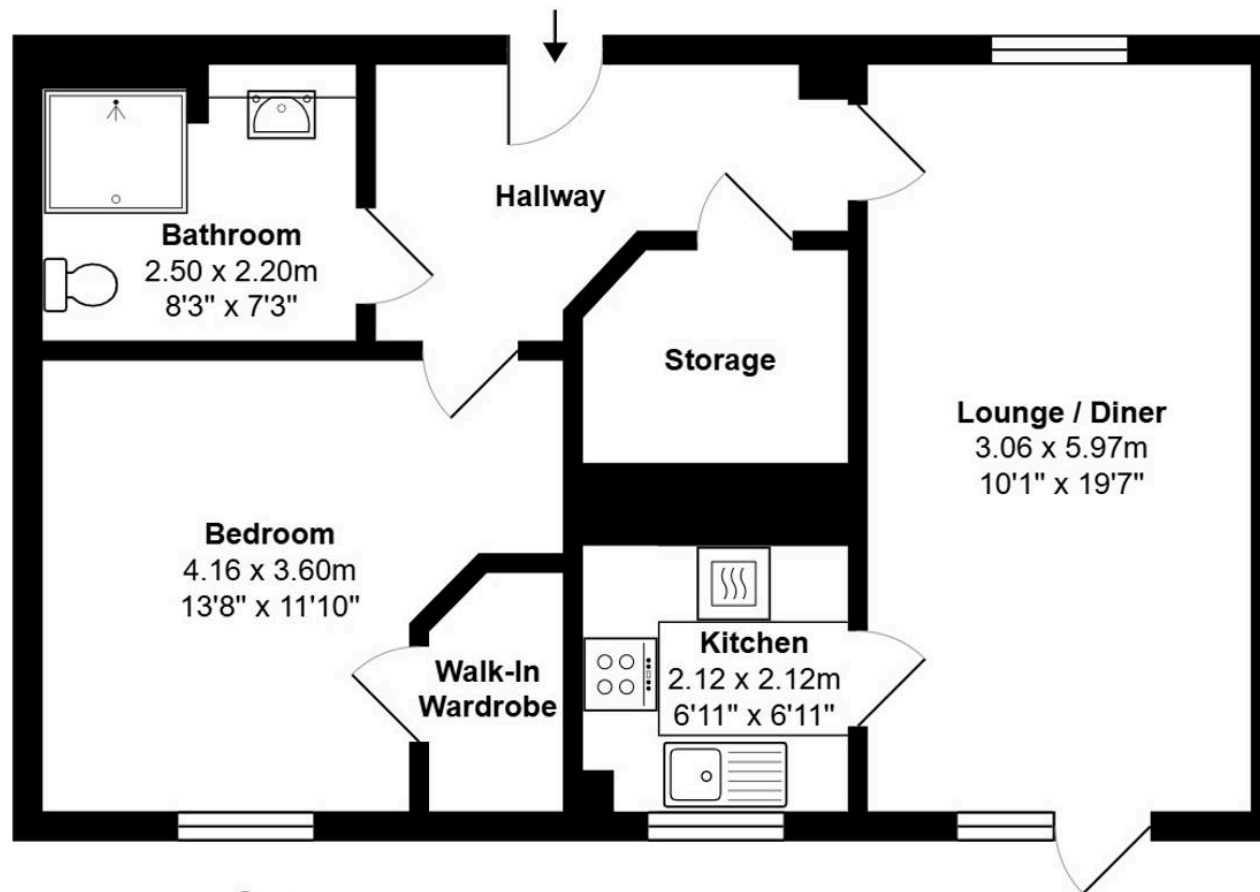
- SPACIOUS, BRIGHT AND AIRY GROUND FLOOR ONE BEDROOM RETIREMENT APARTMENT WITH PRIVATE PATIO
- 24-HOUR EMERGENCY CALL SYSTEM
- VIBRANT COMMUNITY WITH HOMEOWNERS LOUNGE, LANDSCAPED GARDENS AND BISTRO
- ON SITE CQC REGISTERED CARE TEAM AND BESPOKE CARE PACKAGES AVAILABLE



MYRINGS







### Ground Floor

Total Area: 56.1 m<sup>2</sup> ... 603 ft<sup>2</sup> (excluding void)

All measurements are approximate and for display purposes only.









## Myrings Estate Agents

Myrings Estate Agents Ltd, 10 Princes Square - HG1 1LX

01423

566400

▪ [enquiries@myringsestateagents.com](mailto:enquiries@myringsestateagents.com) ▪ <http://myringsestateagents.com/>

