



3 Harlow Cottages, Harlow Grange Park Harrogate

Guide Price £875,000



MYRINGS



3 Harlow Cottages

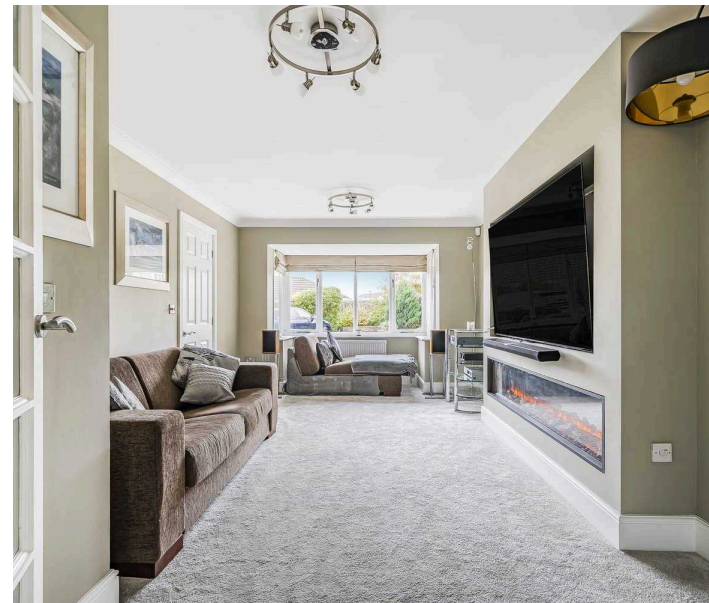
Harlow Grange Park, Harrogate

6 DOUBLE BEDROOMS 3 BATHROOMS -
APPROXIMATELY 2,500 SQ FT - SOUTHERLY
FACING GARDEN - GARAGE AND DRIVEWAY -
CUL-DE-SAC POSITION - HARROGATE
GRAMMAR SCHOOL 1 MILE - TOWN CENTRE 1.5
MILES

Council Tax band: G

Tenure: Freehold

- 6 DOUBLE BEDROOMS 3 BATHROOMS
- 2,500 SQ FT
- SOUTHERLY FACING GARDEN
- GARAGE & DRIVEWAY
- CUL-DE-SAC POSITION
- HARROGATE GRAMMAR SCHOOL 1 MILE
- TOWN CENTRE 1.5 MILES



MYRINGS



Harlow Grange Park, Beckwithshaw, Harrogate, HG3



Denotes restricted head height

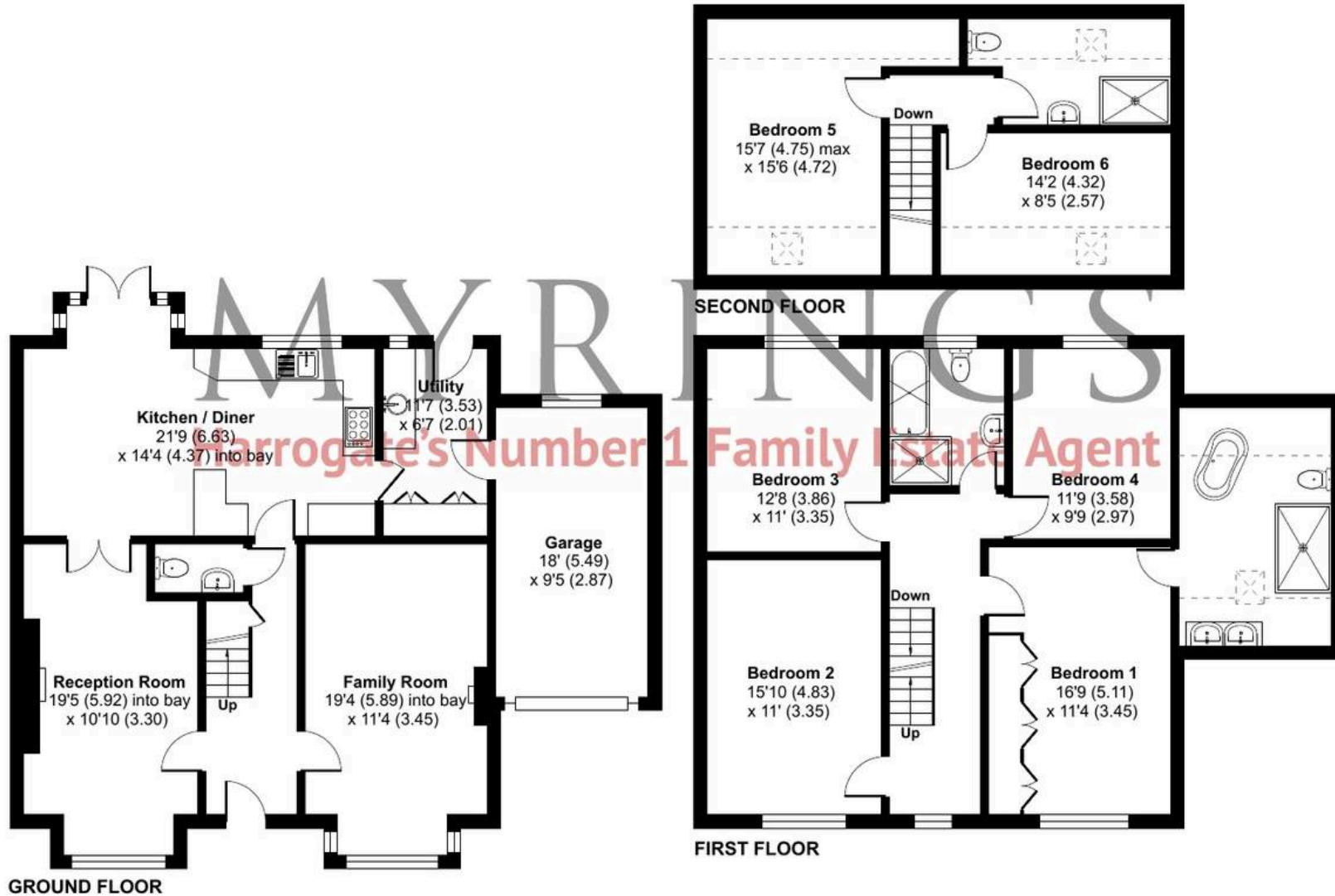
Approximate Area = 2119 sq ft / 196.8 sq m

Limited Use Area(s) = 215 sq ft / 19.9 sq m

Garage = 171 sq ft / 15.8 sq m

Total = 2505 sq ft / 232.5 sq m

For identification only - Not to scale



Floor plan produced in accordance with RICS Property Measurement Standards incorporating International Property Measurement Standards (IPMS2 Residential). © nche.com 2024. Produced for Myrings. REF: 1170041





Myrings Estate Agents

Myrings Estate Agents Ltd, 10 Princes Square - HG1 1LX

01423

566400

▪ enquiries@myringsestateagents.com ▪ <http://myringsestateagents.com/>

