



48 Westminster Crescent, Burn Bridge Harrogate

Guide Price £1,250,000



MYRINGS



48 Westminster Crescent

Burn Bridge, Harrogate

NO ONWARD CHAIN This outstanding five bedroom detached home located in the corner of a sought-after residential cul-de-sac in the most desirable Burn Bridge village boasts simply stunning gardens, the largest plot in the area, backing on to woodland. Having been comprehensively renovated, extended and finished in recent years, this property must be viewed to be fully appreciated!

Council Tax band: F

Tenure: Freehold

- FIVE-BEDROOM DETACHED HOME IN SOUGHT-AFTER BURN BRIDGE VILLAGE
- ABSOLUTELY STUNNING, LARGE GARDENS BACKING ONTO WOODLAND FOR ULTIMATE PRIVACY
- SPACIOUS OPEN-PLAN KITCHEN/DINING/LIVING AREA WITH BI-FOLD DOORS TO A SUN TERRACE.
- GROUND FLOOR GUEST SUITE WITH EN-SUITE SHOWER ROOM; IDEAL FOR RELATIVES OR GUESTS.
- DETACHED GARAGE WITH POWER, LIGHTING, AND GYM; AMPLE DRIVEWAY PARKING



MYRINGS



Westminster Crescent, Burn Bridge, Harrogate, HG3

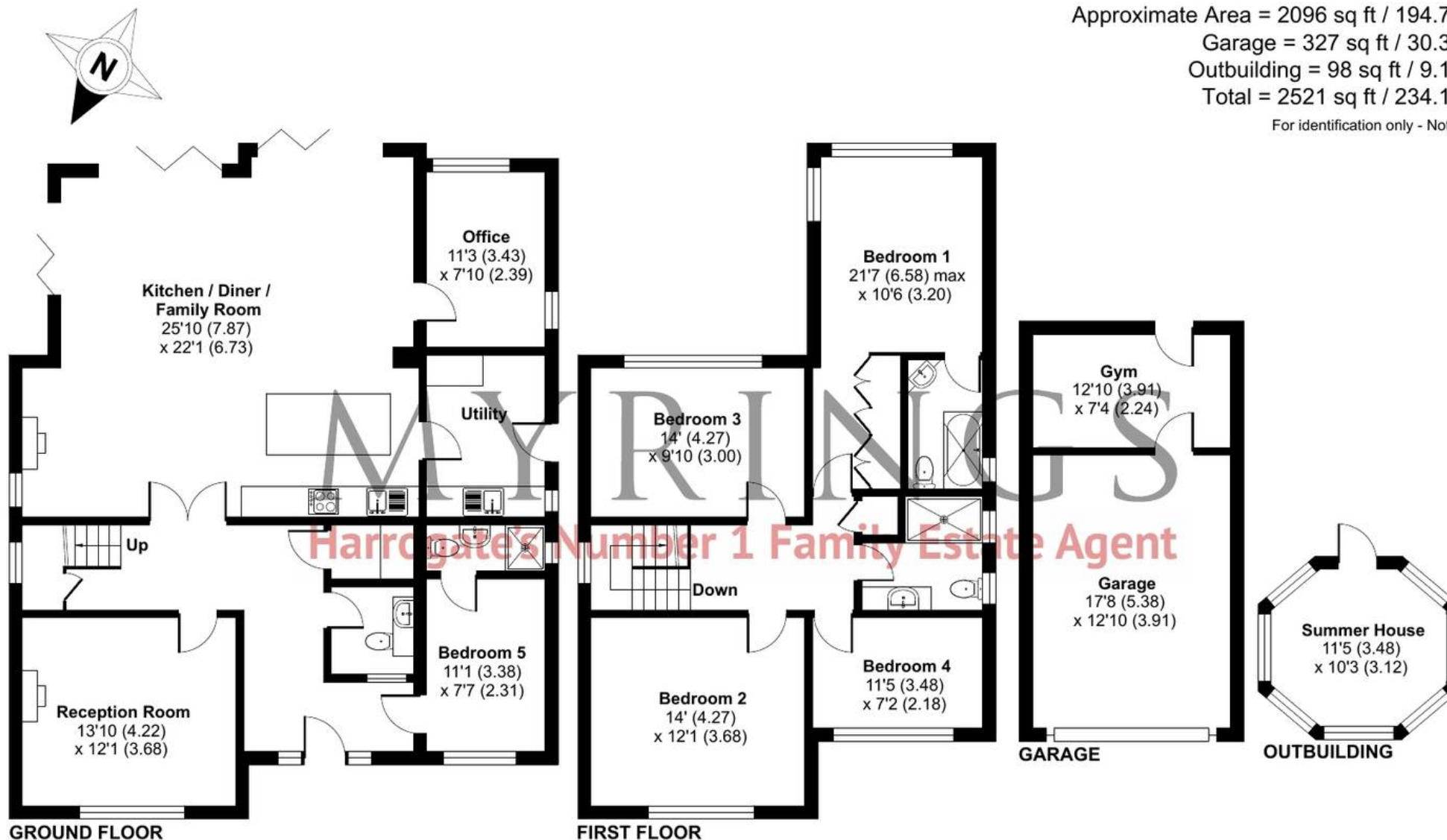
Approximate Area = 2096 sq ft / 194.7 sq m

Garage = 327 sq ft / 30.3 sq m

Outbuilding = 98 sq ft / 9.1 sq m

Total = 2521 sq ft / 234.1 sq m

For identification only - Not to scale



Floor plan produced in accordance with RICS Property Measurement Standards incorporating International Property Measurement Standards (IPMS2 Residential). © nichecom 2024. Produced for Myrings. REF: 1173544





Myrings Estate Agents

Myrings Estate Agents Ltd, 10 Princes Square - HG1 1LX

01423

566400

▪ enquiries@myringsestateagents.com ▪ <http://myringsestateagents.com/>

