



Eastfield Farm Harrogate Road, Spofforth

Harrogate

Guide Price £1,395,000



MYRINGS



Eastfield Farm Harrogate Road

Spofforth, Harrogate

Eastfield Farm is a stunning country house which has been sympathetically extended, re-designed and modernised over recent years yet retaining much of its original charm and character standing in formal landscaped gardens and flagged patios, paddock land and stone built detached stable extending to about 2.06 acres together with a gated side driveway, rear courtyard parking and an all weather tennis court enjoying far reaching views across open countryside within the idyllic village of Spofforth located between Harrogate & Wetherby.

Council Tax band: G

Tenure: Freehold

- A BREATH TAKING COUNTRY HOME
- FAR REACHING VIEWS ACROSS OPEN COUNTRYSIDE
- TASTEFUL INTERIORS THROUGHOUT
- ALL WEATHER TENNIS COURT
- STANDING IN ABOUT 2.06 ACRES
- ABOUT 4400 SQUARE FEET
- PADDOCK & STONE BUILT STABLE



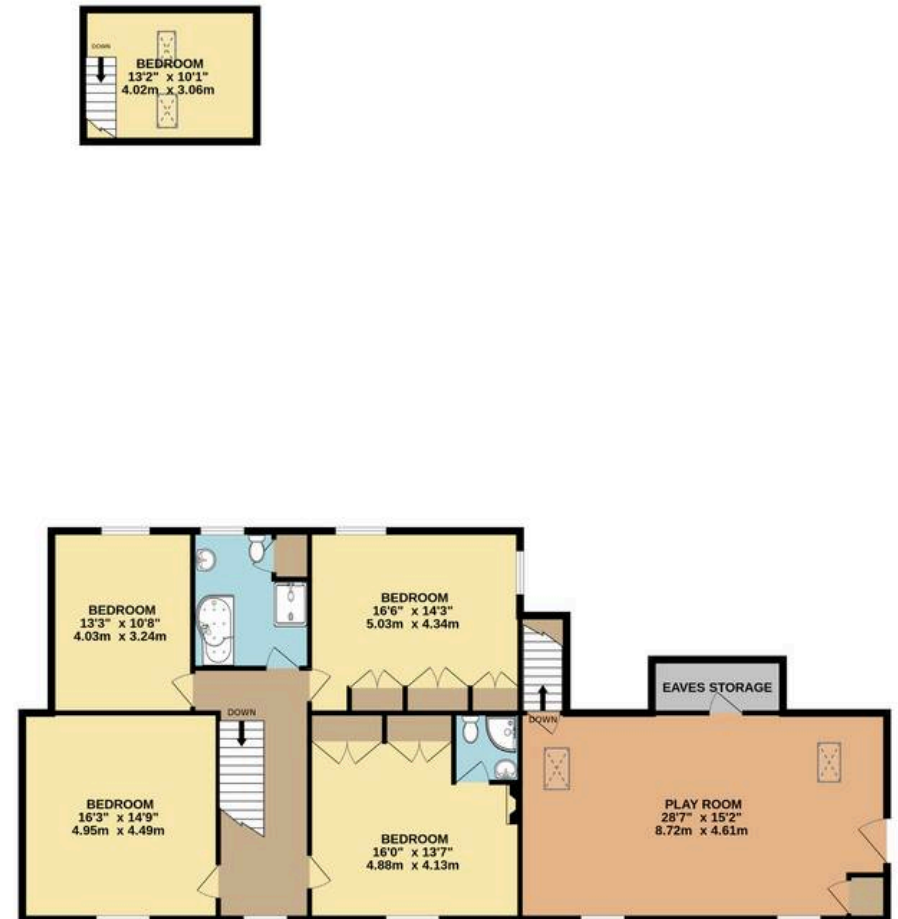
MYRINGS



GROUND FLOOR
2673 sq.ft. (248.4 sq.m.) approx.



1ST FLOOR
1727 sq.ft. (160.4 sq.m.) approx.



TOTAL FLOOR AREA : 4400 sq.ft. (408.8 sq.m.) approx.

Whilst every attempt has been made to ensure the accuracy of the floorplan contained here, measurements of doors, windows, rooms and any other items are approximate and no responsibility is taken for any error, omission or mis-statement. This plan is for illustrative purposes only and should be used as such by any prospective purchaser. The services, systems and appliances shown have not been tested and no guarantee as to their operability or efficiency can be given.
Made with Metropix ©2024





Myrings Estate Agents

Myrings Estate Agents Ltd, 10 Princes Square - HG1 1LX

01423

566400

▪ enquiries@myringsestateagents.com ▪ <http://myringsestateagents.com/>

