



Flat 1, Strayside Mews, 2 Leeds Road Harrogate

Guide Price £695,000



MYRINGS

Harrogate's Family Estate Agent



Flat 1

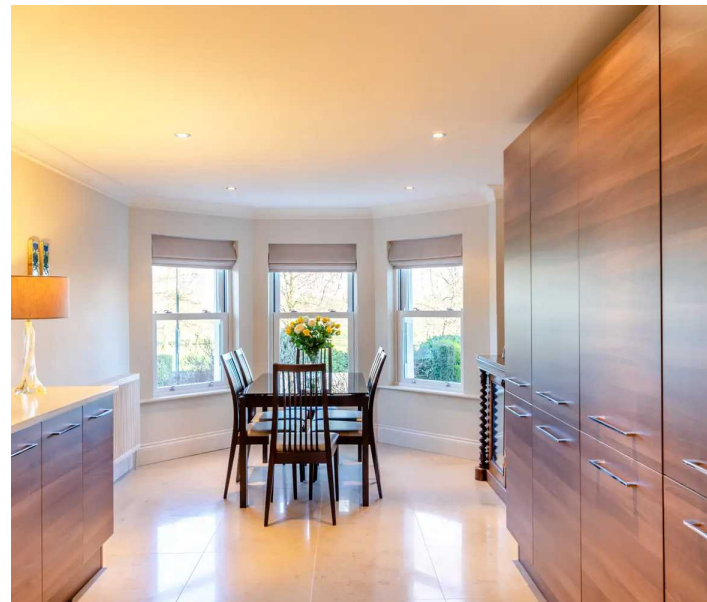
Strayside Mews, Harrogate

This stunning two/three bedroom duplex apartment forms part of an elegant Victorian villa situated in the heart of Harrogate's town centre overlooking the Stray parkland. Offered for sale with no onward chain, the property stands in wonderful communal gardens with its own dedicated area, as well as one allocated off road parking space.

Council Tax band: F

Tenure: Leasehold

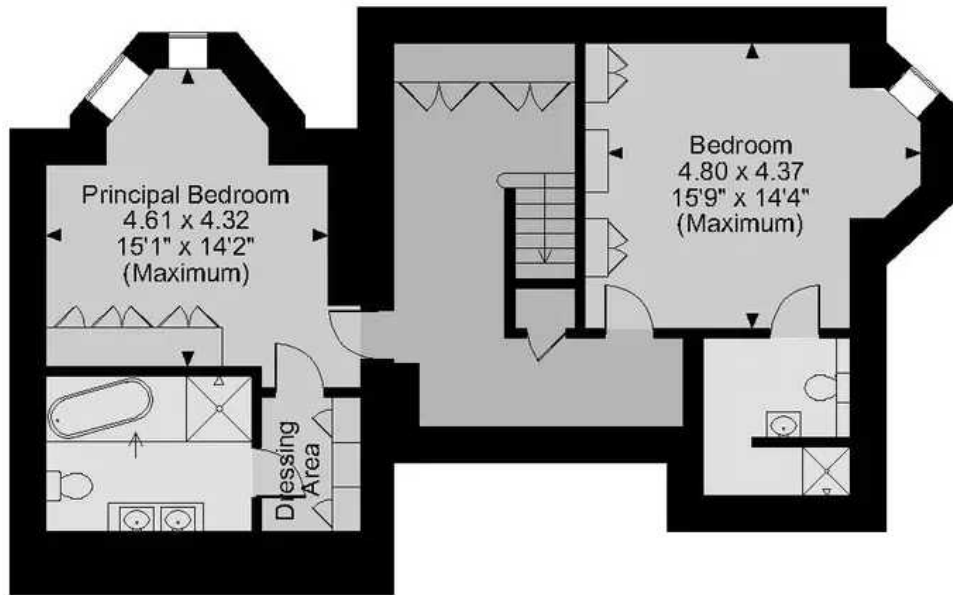
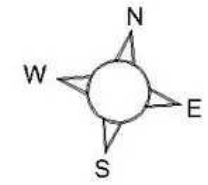
- STUNNING TWO/THREE BEDROOM DUPLEX APARTMENT
- NO ONWARD CHAIN
- FORMING PART OF VICTORIAN VILLA OVERLOOKING STRAY PARKLAND
- PRIVATE PARKING AND OUTDOOR SPACE
- OVER 1900 SQUARE FEET OF ACCOMMODATION



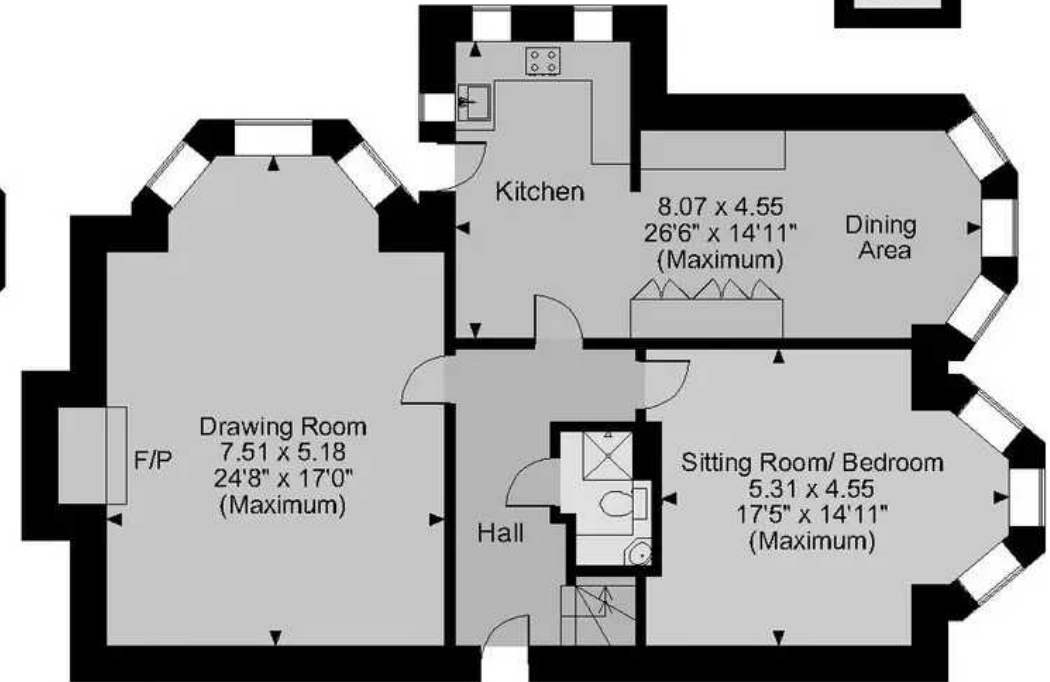
MYRINGS



Strayside Mews Leeds Road, Harrogate
Internal area 1,922 sq ft (179 sq m)
Quoted Area Excludes 'External Store'



Lower Level



Ground Floor

FOR ILLUSTRATIVE PURPOSES ONLY - NOT TO SCALE

The position & size of doors, windows, appliances and other features are approximate only.

© ehouse. Unauthorised reproduction prohibited. Drawing ref. dig/8581867/MRB





Myrings Estate Agents

Myrings Estate Agents Ltd, 10 Princes Square - HG1 1LX

01423
566400

• enquiries@myringsestateagents.com • <http://myringsestateagents.com/>

