



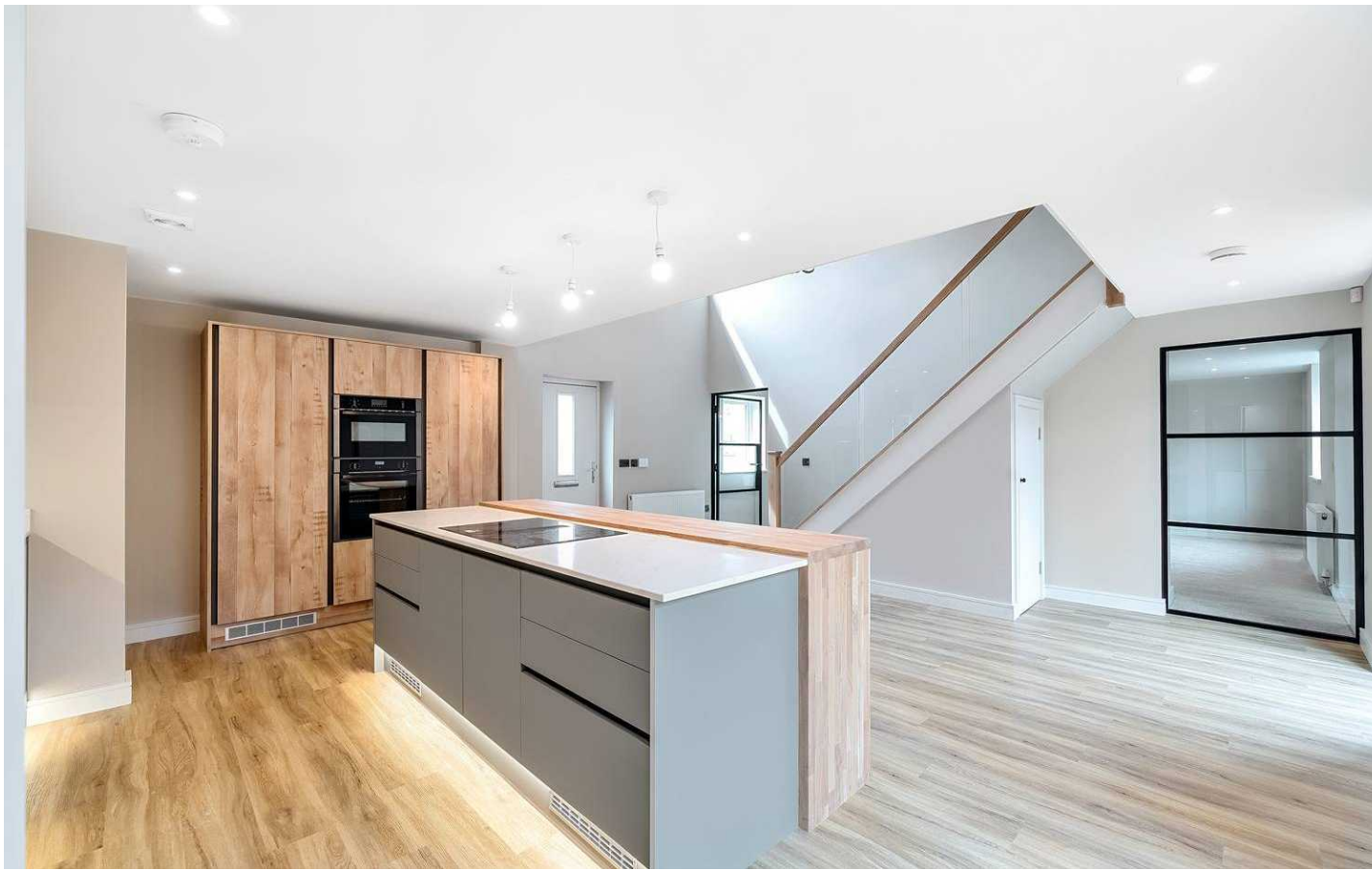
Warren, Hawthorne Place, Harrogate

Harrogate

Guide Price £650,000



MYRINGS



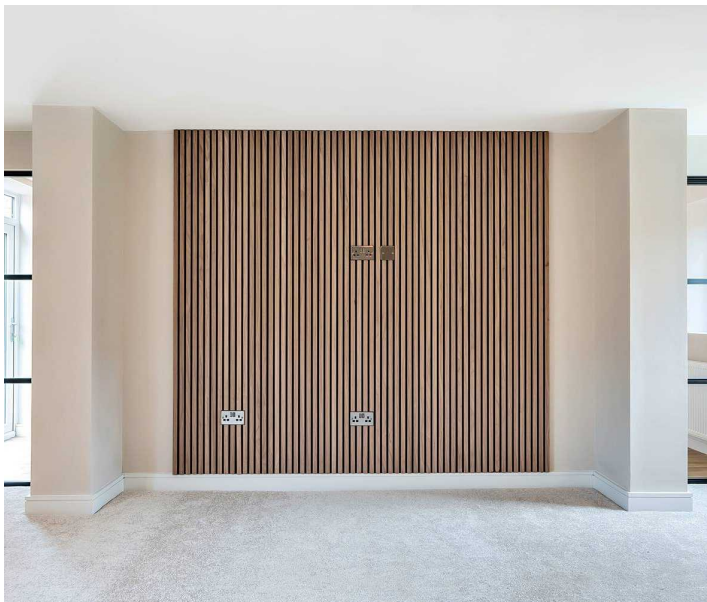
Warren, Hawthorne Place

, Harrogate

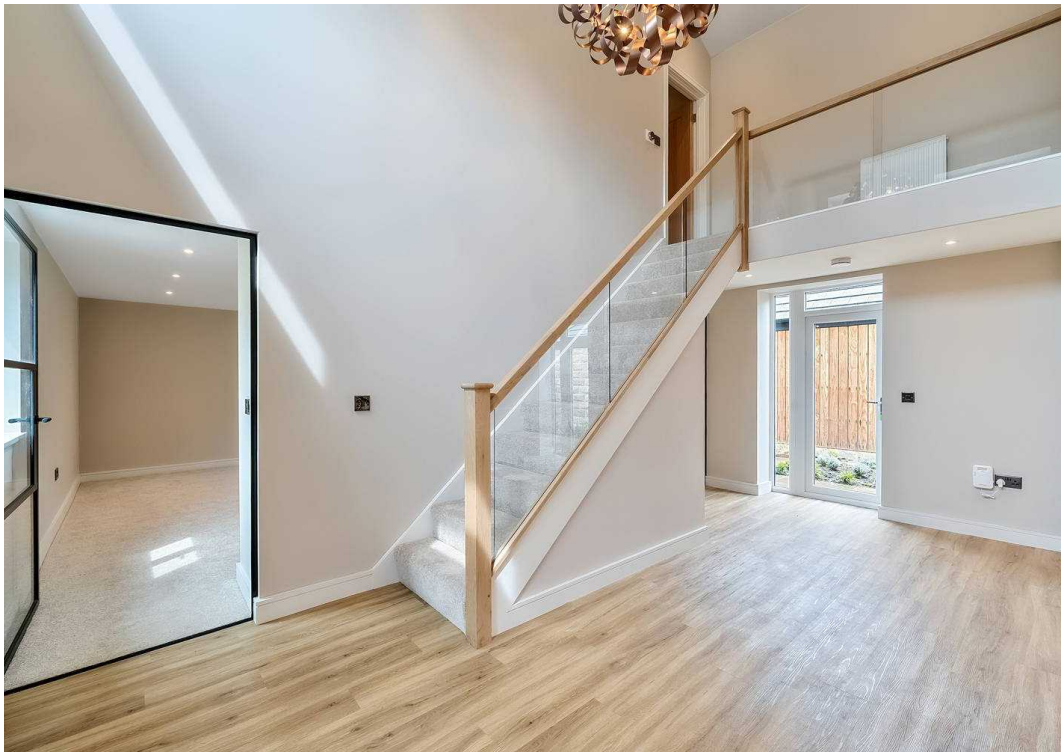
'The Warren' is a charming 3 bedroom new build barn featuring breath taking double height living space forming part of the highly regarded Kingsley Farm development of only 6 stunning new homes. Standing in landscaped gardens with a block set front driveway.

Tenure: Freehold

- Double height kitchen & living area
- Study for home working
- Master bedroom with walk-in wardrobes
- Private landscaped gardens



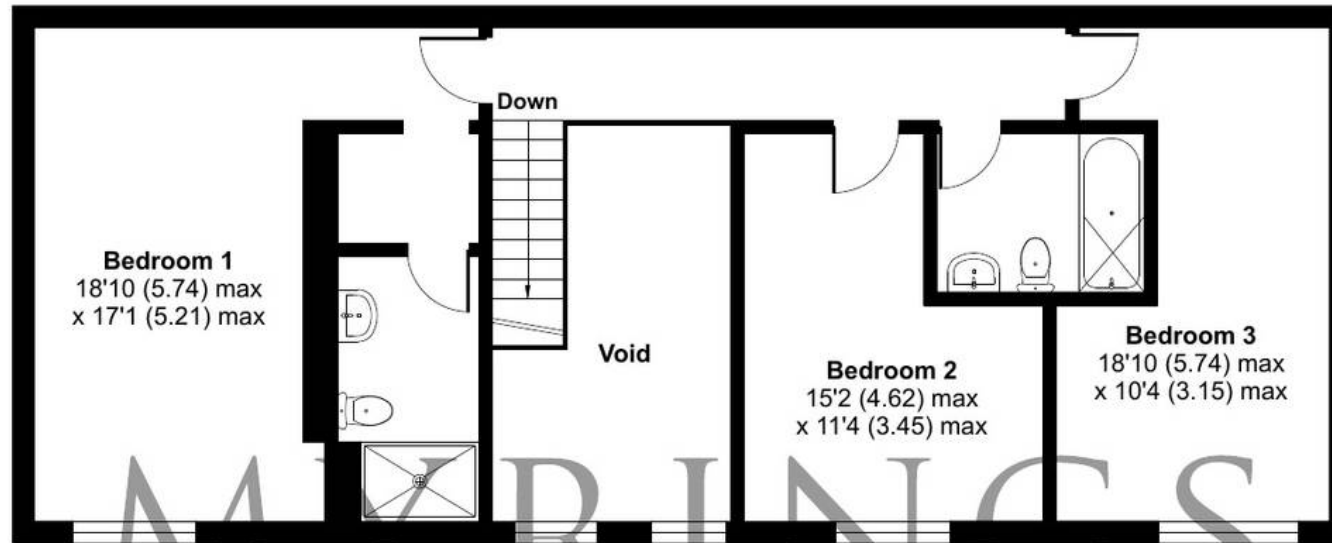
MYRINGS



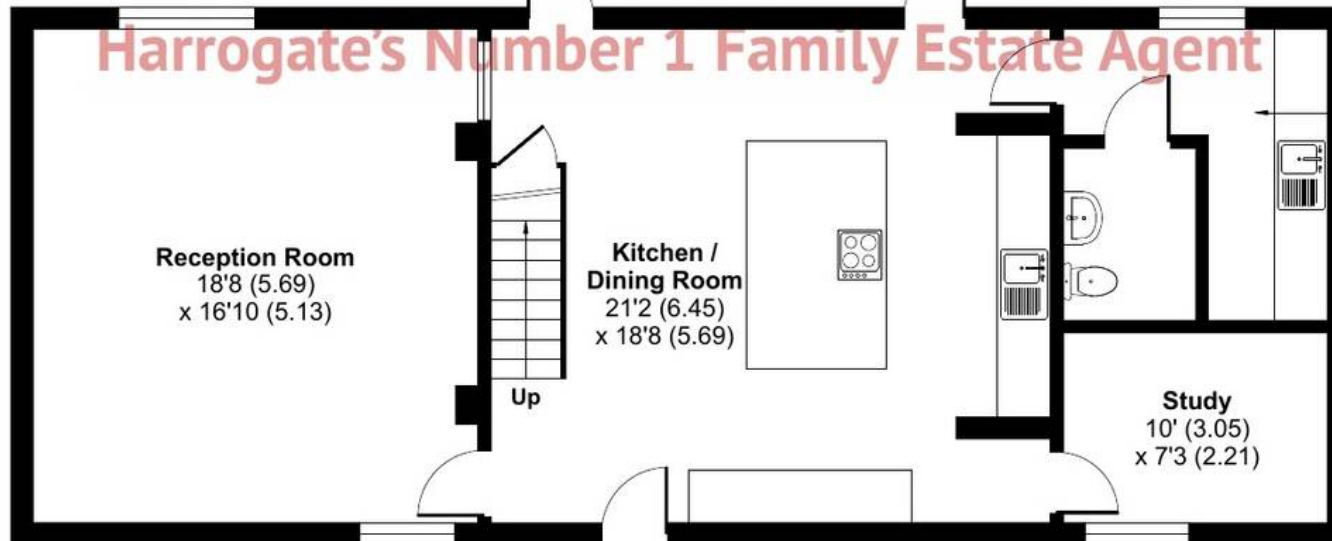
Hawthorne Place, Harrogate, HG1 4FQ

Approximate Area = 1705 sq ft / 158.4 sq m (excludes void)

For identification only - Not to scale



FIRST FLOOR



GROUND FLOOR



Floor plan produced in accordance with RICS Property Measurement Standards incorporating International Property Measurement Standards (IPMS2 Residential). © nichecom 2024. Produced for Myrings. REF: 1129217





Myrings Estate Agents

Myrings Estate Agents Ltd, 10 Princes Square - HG1 1LX

01423

566400

▪ enquiries@myringsestateagents.com ▪ <http://myringsestateagents.com/>

