



Padside Green Barn, Padside

Harrogate

Guide Price **£1,600,000**



MYRINGS

Harrogate's Family Estate Agent



Padside Green Barn

Padside, Harrogate

Offered for sale with no onward chain, this simply stunning Barn conversion is located in a quaint hamlet within the Nidderdale AONB. Packed with character and charm, the property boasts beautiful gardens and land totaling over 3 acres in size, stables and an annexe with planning for an external staircase making it a truly separate space ideal for dependent relatives or even a holiday let. This property is one truly not to be missed!

Council Tax band: G

Tenure: Freehold

- Chain-Free Sale: No onward chain for a hassle-free purchase
- Idyllic Setting: Located in a quaint hamlet within Nidderdale AONB
- Expansive Plot: Over 3 acres, including beautiful gardens and stables
- Versatile Annexe: Separate space with potential for relatives or holiday let
- Luxurious Features: Heated flooring, AGA, and original beams offer modern comfort with traditional charm



MYRINGS



Padside Green Barn, Padside, Harrogate, HG3

Approximate Area = 3212 sq ft / 298.4 sq m (excludes void)

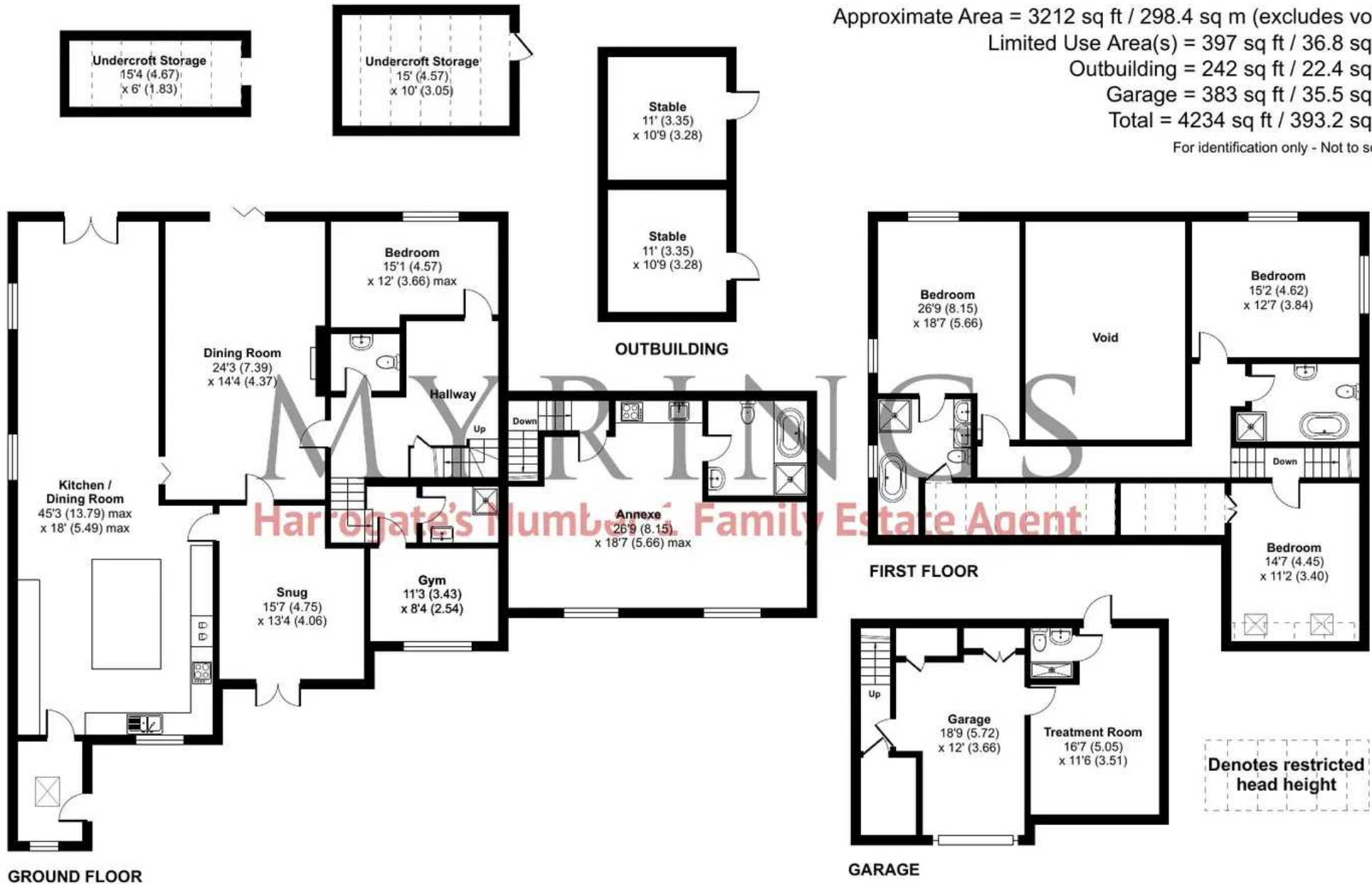
Limited Use Area(s) = 397 sq ft / 36.8 sq m

Outbuilding = 242 sq ft / 22.4 sq m

Garage = 383 sq ft / 35.5 sq m

Total = 4234 sq ft / 393.2 sq m

For identification only - Not to scale



Floor plan produced in accordance with RICS Property Measurement Standards incorporating International Property Measurement Standards (IPMS2 Residential). © nichecom 2024. Produced for Myrings. REF: 1122064





Myrings Estate Agents

Myrings Estate Agents Ltd, 10 Princes Square - HG1 1LX

01423
566400

• enquiries@myringsestateagents.com • <http://myringsestateagents.com/>

