



10 Park Edge, Harrogate

Harrogate

Guide Price **£1,395,000**



MYRINGS

Harrogate's Family Estate Agent



10 Park Edge

Harrogate, Harrogate

A rare and outstanding opportunity to acquire a period double fronted 5 bedroom detached residence standing in wonderful well stocked private gardens in a quiet tree lined cul de sac built by renowned local builder Procter in the early 1930's with a mixture of Edwardian and Arts & Crafts influences considered one of the best addresses in Harrogate.

Council Tax band: G

Tenure: Freehold

- ONE OF THE MOST SOUGHT AFTER ADDRESSES IN HARROGATE
- LOVELY PRIVATE WELL STOCKED GARDENS
- NEW GARDEN OFFICE/SUMMER HOUSE
- QUIET CUL DE SAC LOCATION
- BLOCK SET DRIVEWAY & GARAGE
- MANY PERIOD FEATURES



MYRINGS



Park Edge, Harrogate, HG2

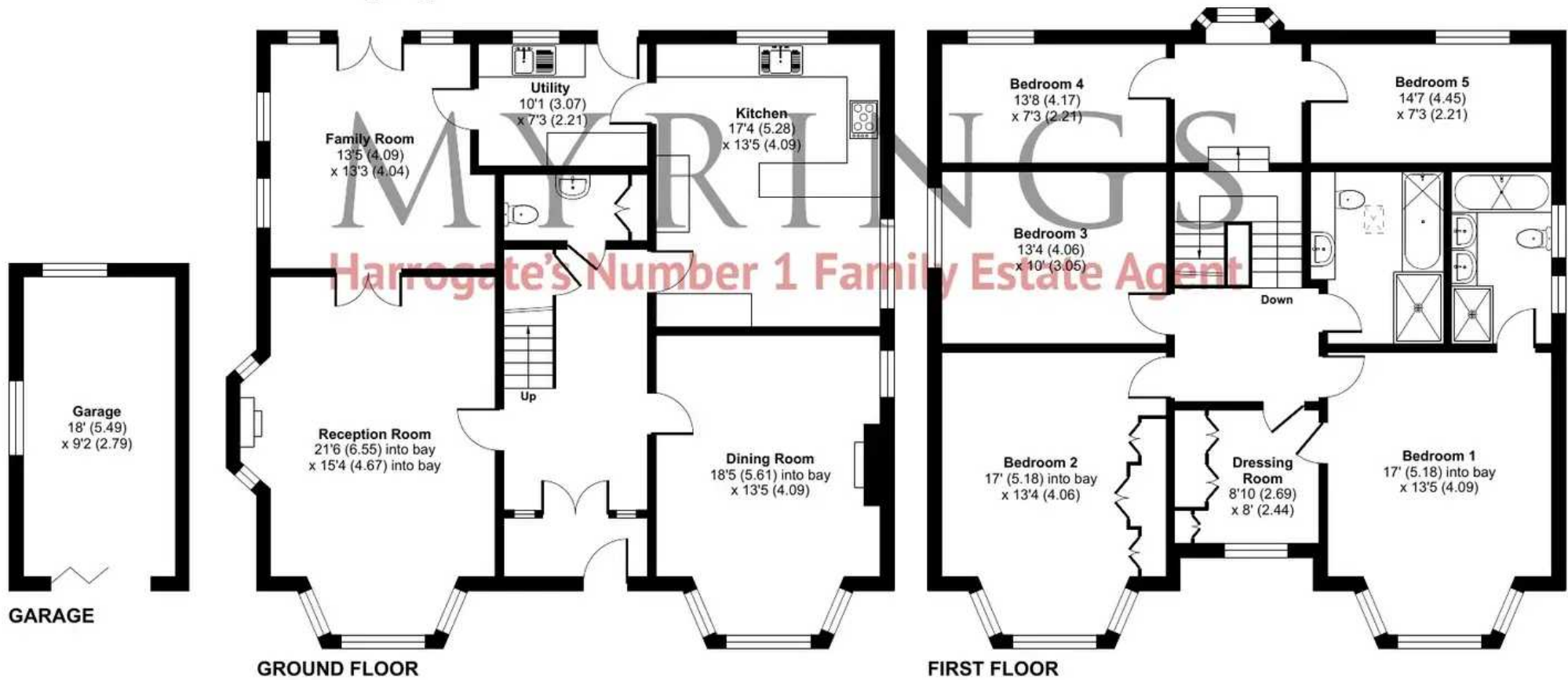
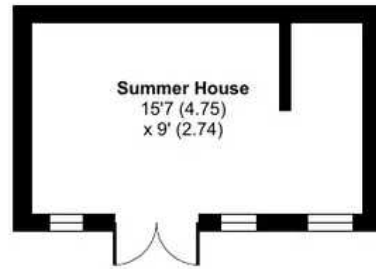
Approximate Area = 2466 sq ft / 229 sq m

Garage = 165 sq ft / 15.3 sq m

Outbuilding = 141 sq ft / 13 sq m

Total = 2772 sq ft / 257.3 sq m

For identification only - Not to scale







Myrings Estate Agents

Myrings Estate Agents Ltd, 10 Princes Square - HG1 1LX

01423
566400

• enquiries@myringsestateagents.com • <http://myringsestateagents.com/>

