



# Roedhouse, Bar Lane, Roecliffe

Roecliffe

Guide Price **£1,000,000**



# MYRINGS

Harrogate's Family Estate Agent





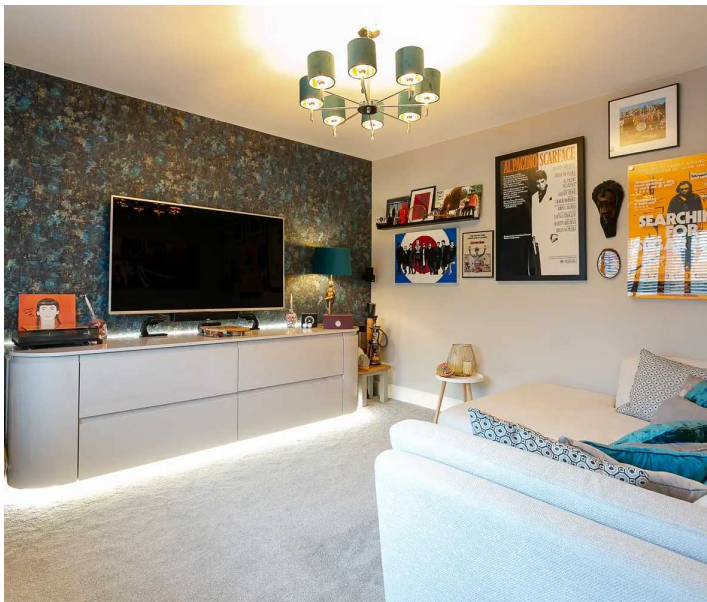
## Roedhouse, Bar Lane

Roecliffe, Roecliffe

CHAIN FREE - HIGHLY DESIRABLE VILLAGE - BUILT 2018 - HIGHLY ENERGY EFFICIENT HOME - EXCLUSIVE DEVELOPMENT OF ONLY 2 HOMES - ELECTRIC GATED ACCESS - DOUBLE GARAGE  
Council Tax band: E

Tenure: Freehold

- HIGHLY DESIRABLE VILLAGE
- A1M - 1.4 MILES
- HIGHLY ENERGY EFFICIENT HOME
- BUILT 2018
- EXCLUSIVE DEVELOPMENT OF 2 HOMES
- ELECTRIC GATED ACCESS
- DOUBLE GARAGE



MYRINGS

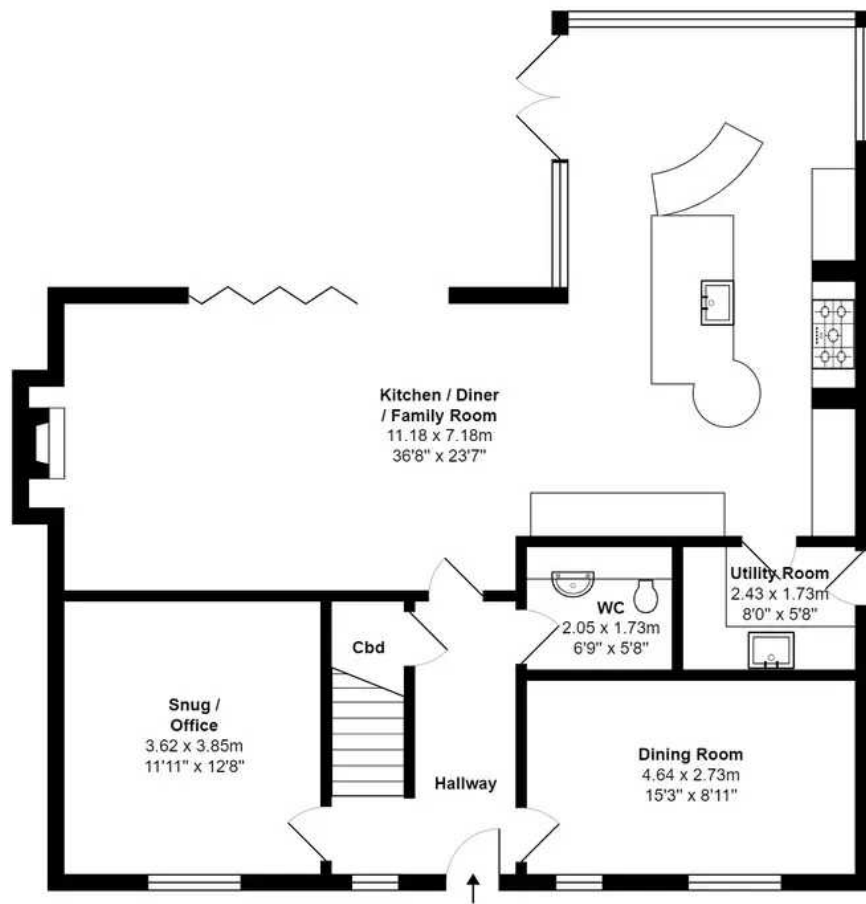
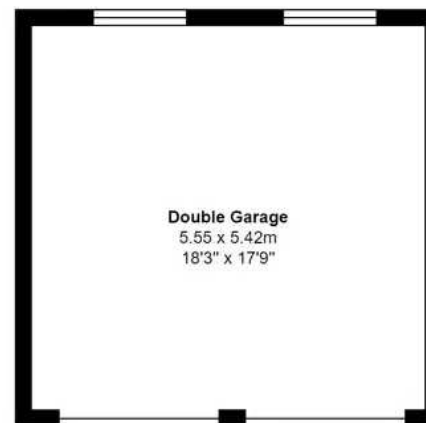




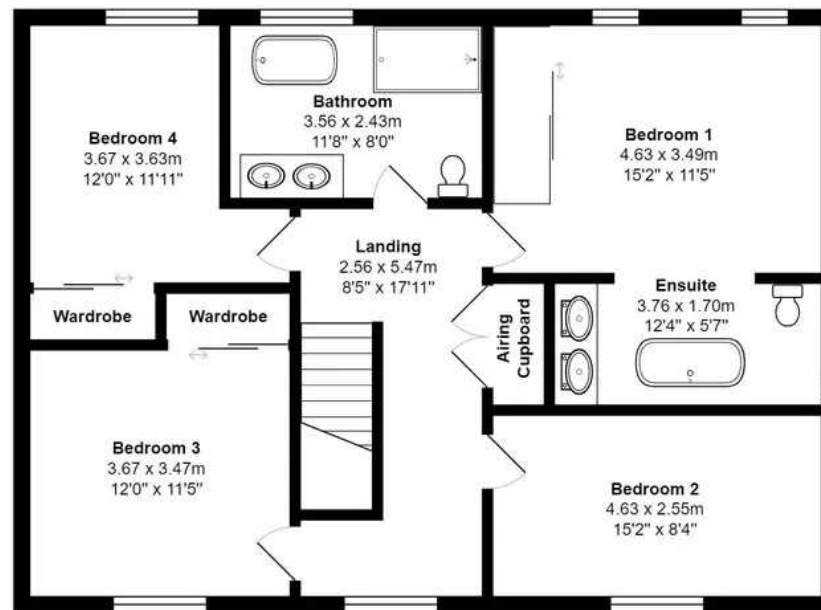


Total Area: 196.9 m<sup>2</sup> ... 2119 ft<sup>2</sup> (excluding double garage)

All measurements are approximate and for display purposes only.



**Ground Floor**  
Area: 106.8 m<sup>2</sup> ... 1149 ft<sup>2</sup>



**First Floor**  
Area: 90.1 m<sup>2</sup> ... 970 ft<sup>2</sup>









## Myrings Estate Agents

Myrings Estate Agents Ltd, 10 Princes Square - HG1 1LX

01423  
566400

• [enquiries@myringsestateagents.com](mailto:enquiries@myringsestateagents.com) • <http://myringsestateagents.com/>

