



# 21 Park Lane, Knaresborough

Knaresborough

Guide Price £350,000



# MYRINGS

Harrogate's Family Estate Agent





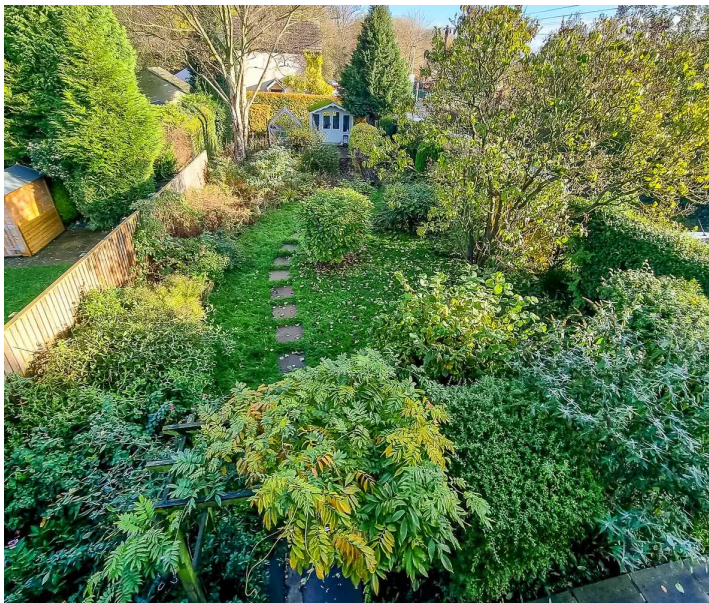
## 21 Park Lane

Knaresborough, Knaresborough

NO ONWARD CHAIN - DECEPTIVELY SPACIOUS COTTAGE - 1243 SQUARE FEET INCLUDING CELLAR UTILITY - THREE GOOD SIZED BEDROOMS - LARGE SIDE GARDEN AND GATED PARKING SPACE.  
Council Tax band: C

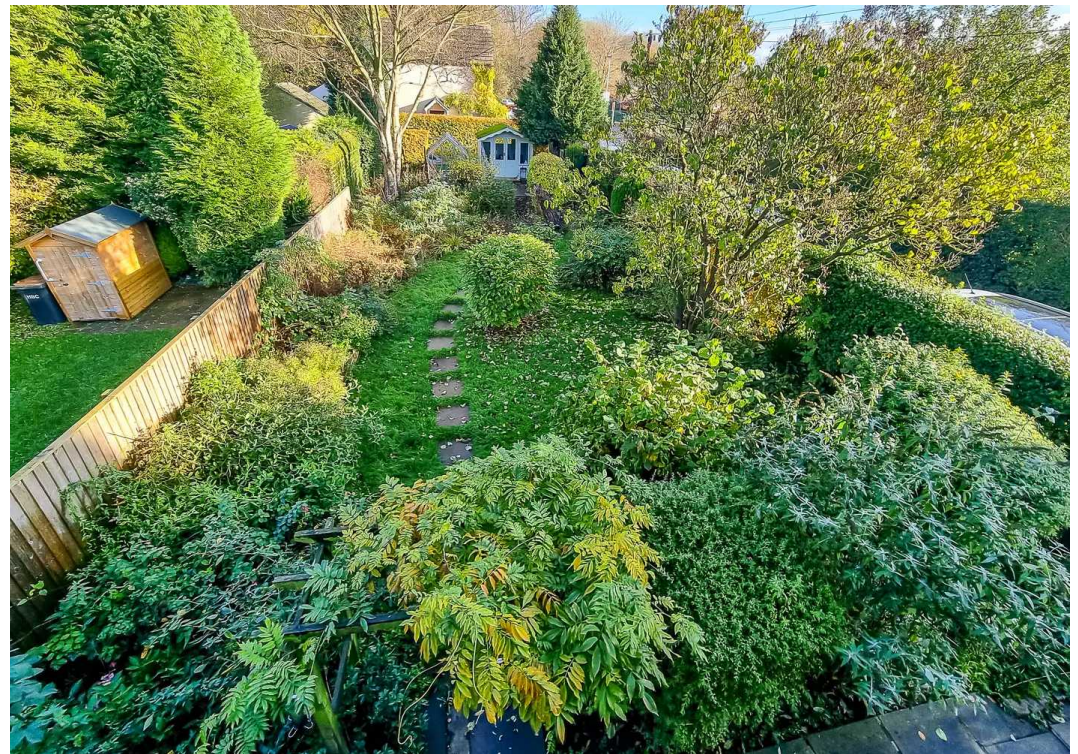
Tenure: Freehold

- NO CHAIN
- LARGE SIDE GARDEN WITH PARKING
- THREE GOOD SIZED BEDROOMS
- EXTENDED TO ALMOST 1250 SQUARE FEET INCLUDING CELLAR UTILITY
- NOW IN NEED OF SOME GENERAL MODERNISATION
- ON THE DOORSTEP OF WALKS AND THE HAY-A-PARK LAKES

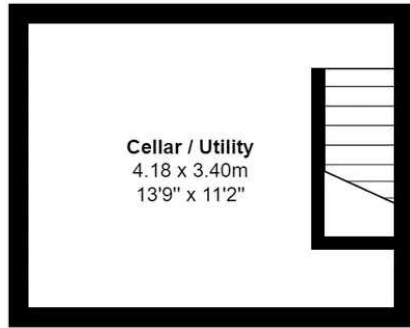


MYRINGS







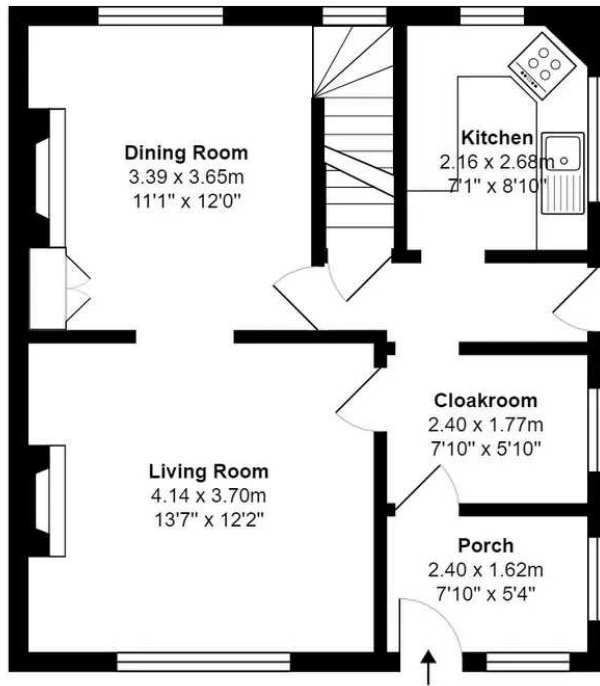


**Cellar**  
Area: 14.9 m<sup>2</sup> ... 160 ft<sup>2</sup>

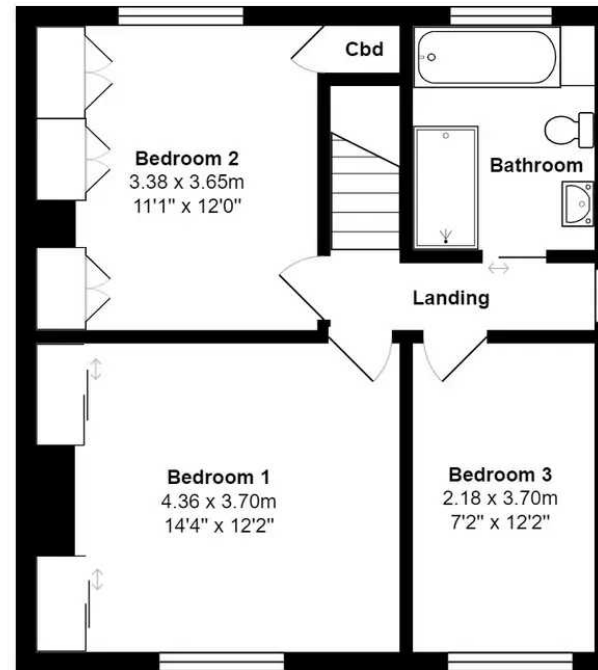


Total Area: 115.4 m<sup>2</sup> ... 1243 ft<sup>2</sup>

All measurements are approximate  
and for display purposes only.



**Ground Floor**  
Area: 50.3 m<sup>2</sup> ... 541 ft<sup>2</sup>



**First Floor**  
Area: 50.3 m<sup>2</sup> ... 541 ft<sup>2</sup>









## Myrings Estate Agents

Myrings Estate Agents Ltd, 10 Princes Square - HG1 1LX

01423  
566400

• [enquiries@myringsestateagents.com](mailto:enquiries@myringsestateagents.com) • <http://myringsestateagents.com/>

