



29a Rutland Drive, Harrogate

Harrogate

Offers Over £1,995,000



MYRINGS



29a Rutland Drive

Harrogate, Harrogate

Introducing Rutland House, an impressive six bedroom detached house situated on a highly-sought after road within the desirable Duchy Estate. This detached home offers over 3000 square feet of accommodation, providing ample space for both family living and entertaining. The property showcases a private south facing rear garden, perfect for enjoying the summer sun.

Council Tax band: G

Tenure: Freehold

- DETACHED DUCHY FAMILY HOME
- PRIVATE SOUTH FACING REAR GARDEN
- OVER 3000 SQUARE FEET OF ACCOMMODATION
- HIGHLY-SOUGHT AFTER ROAD WITHIN DUCHY ESTATE
- SHORT WALK TO VALLEY GARDENS, RHS HARLOW CARR GARDENS AND TOWN CENTRE
- NO ONWARD CHAIN



MYRINGS



Rutland Drive, Harrogate, HG1

Approximate Area = 3055 sq ft / 283.8 sq m (includes garage)

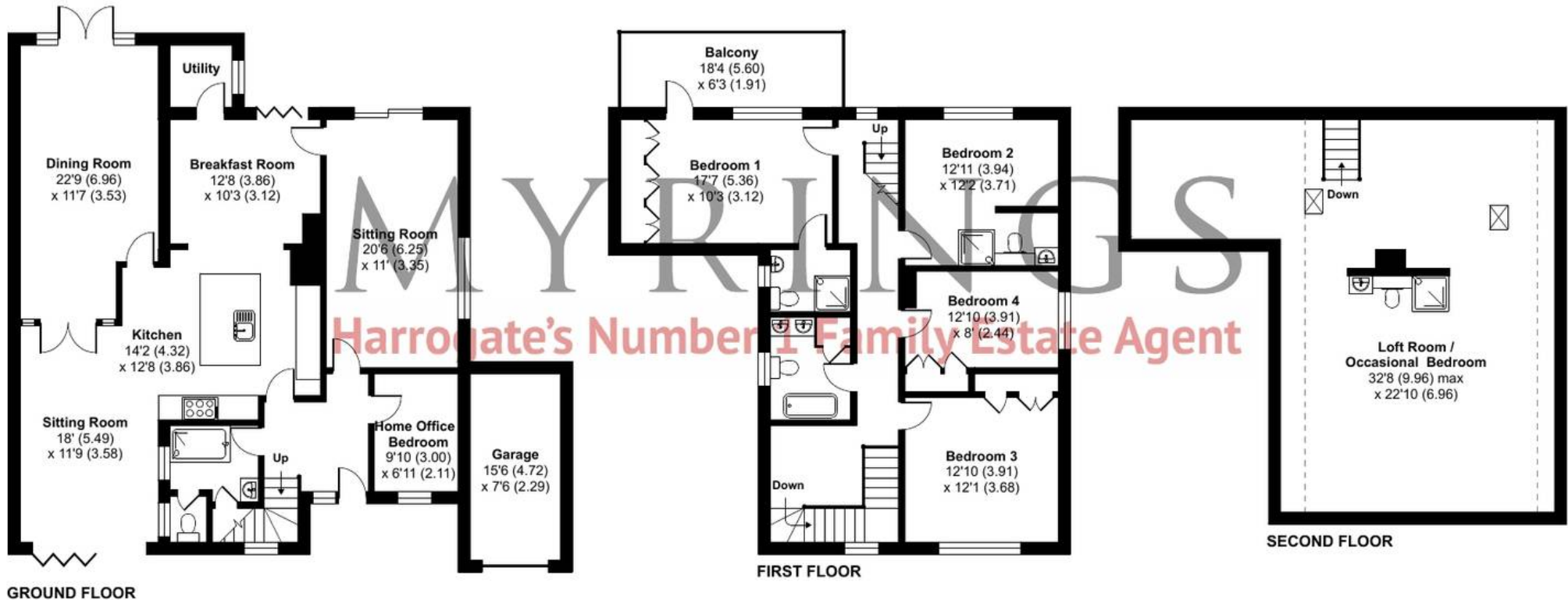
Limited Use Area(s) = 239 sq ft / 22.2 sq m

Total = 3294 sq ft / 306 sq m

For identification only - Not to scale



Denotes restricted head height



Floor plan produced in accordance with RICS Property Measurement Standards incorporating International Property Measurement Standards (IPMS2 Residential). © nichecom 2023. Produced for Myrings. REF: 1024394





Myrings Estate Agents

Myrings Estate Agents Ltd, 10 Princes Square - HG1 1LX

01423

566400

▪ enquiries@myringsestateagents.com ▪ <http://myringsestateagents.com/>

