



Luscombe Maye
Since 1873

Highclere, Slapton

£1,200,000

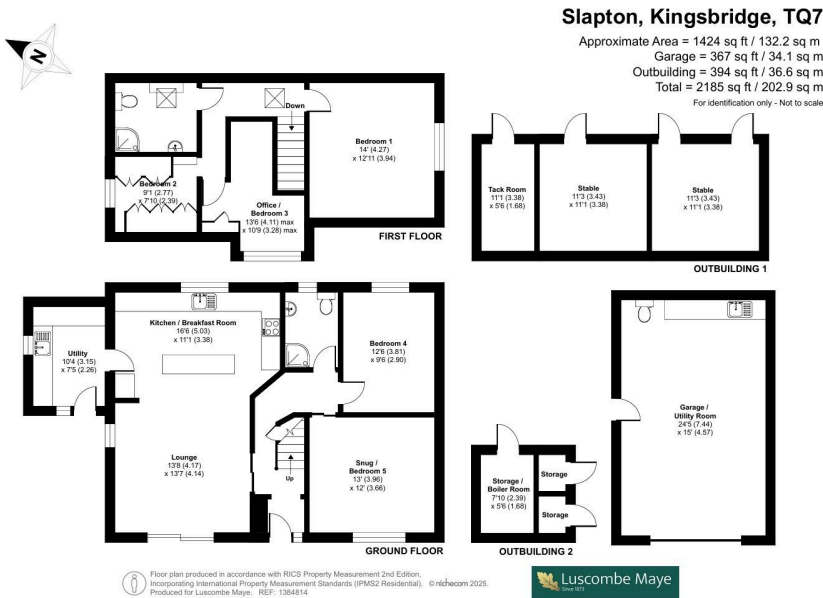
🛏 5 🍳 2 🛋 2



- Detached Property
- Circa 3 Acres Of Land
- Level Garden
- Enclosed Field
- Fully Renovated Throughout
- Immaculately Presented
- Versatile Living Space



This property provides a rare opportunity to acquire a beautifully presented home with 3 acres of immaculate grounds and outstanding rural outlooks.



Score	Energy rating	Current	Potential
92+	A		
81-91	B		
69-80	C		70 C
55-68	D	63 D	
39-54	E		
21-38	F		
1-20	G		

Floor plan produced in accordance with RICS Property Measurement 2nd Edition, incorporating International Property Measurement Standards (IPMS2 Residential). © richcom 2025. Produced for Luscombe Maye. REF: 1384814



Totnes:
59 Fore Street, Totnes TQ9 5NJ
01803 869920
totnes@luscombemaye.com
www.luscombemaye.com

Important Notice: Luscombe Maye gives notice that: 1. These particulars do not constitute an offer or contract or part thereof. 2. All descriptions, photographs and plans are for guidance only and should not be relied upon as statements or representations of fact. All measurements are approximate and not necessarily to scale. Any prospective purchaser must satisfy themselves of the correctness of the information within the particulars by inspection or otherwise. 3. Luscombe Maye does not have any authority to give any representations or warranties whatsoever in relation to this property (including but not limited to planning/building regulations), nor can it enter into any contract on behalf of the Vendor.