



Luscombe Maye
Since 1873

Church Street, Kingsbridge

Guide Price £495,000

4 2 3



This substantial terraced property offers a harmonious blend of traditional charm and modern convenience.

Inside, the property extends across four floors, offering approximately 2067 sq ft of versatile living space.

The lower ground floor is the heart of the home, with a well-appointed kitchen/breakfast room ideal for casual dining and family gatherings, alongside a practical utility room for laundry and storage. The elegant dining room is perfect for formal occasions, featuring character details that create a warm, inviting atmosphere.

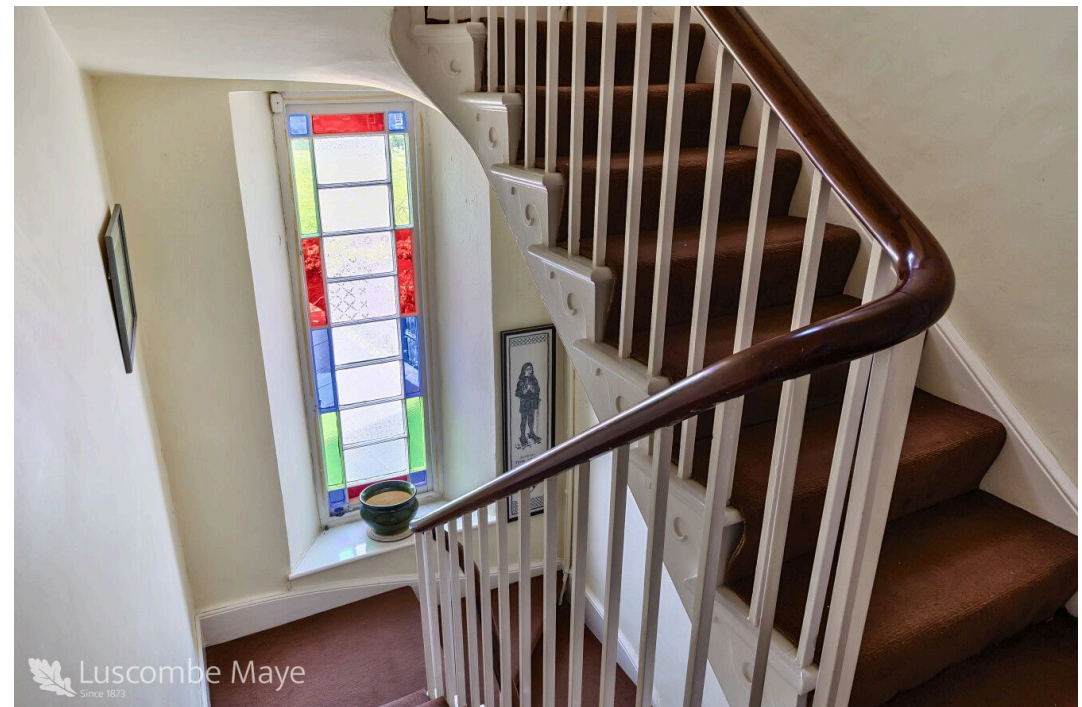
On the ground floor, a comfortable bedroom (Bedroom 4) offers flexibility as a guest room or home office. The inviting sitting room, complete with a feature fireplace and period detailing, provides a delightful space to relax. A conveniently located bathroom completes this level.

The first floor houses the principal bedrooms. Bedroom 1 is a generously sized retreat filled with natural light. A sliding door offers access to the home office/study. Bedroom 2 offers a serene space for rest.

The second floor is currently arranged as a self contained flat with shared access via the main staircase, useful for multi-generational living. Bedroom 3 is bright and airy, and the spacious lounge offers a comfortable area for relaxation. A compact kitchen and an additional bathroom complete this floor, ensuring privacy and convenience. The flat can easily be re-instated back into the house.

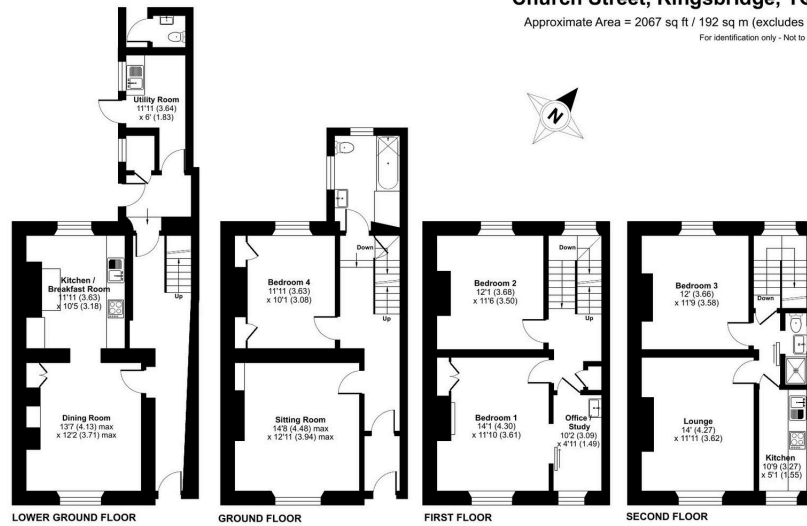
Original features such as multi-paned sash windows, decorative fireplaces, picture rails, and ceiling mouldings enhance the home's character, while built-in storage solutions add practicality. The elegant staircase, with its curved wooden handrail and original stained glass window, serves as a beautiful focal point.

Outside the property you will find a private garden with gate leading straight into the park—green space right at your doorstep.



Church Street, Kingsbridge, TQ7

Approximate Area = 2067 sq ft / 192 sq m (excludes wc)
For identification only - Not to scale



Floor plan produced in accordance with RICS Property Measurement 2nd Edition, incorporating International Property Measurement Standards (IPMS2 Residential). © richcom 2025. Produced for Luscombe Maye. REF: 1312731



- Stunning Four Bedroom Victorian Townhouse
- Large Spacious Rooms
- Plenty Of Original Features
- Close to Local Primary and Secondary Schools
- Excellent Renovation/Redevelopment Opportunities
- Accommodation Arranged over Four Floors
- Central Kingsbridge Location
- Versatile Living Accommodation
- Close to Local Amenities



Use the QR code for further "Material Information" about this home

Energy Efficiency Rating

	Current	Potential
Very energy efficient - lower running costs		
(92 plus) A		
(81-91) B		
(69-80) C		80
(55-68) D		
(39-54) E		
(21-38) F	21	
(1-20) G		
Not energy efficient - higher running costs		
England & Wales	EU Directive 2002/91/EC	



Kingsbridge:
62 Fore Street, Kingsbridge TQ7 1PP
01548 857474
kingsbridge@luscombemaye.com
www.luscombemaye.com