



Luscombe Maye
Since 1873

Devon Square, Kingsbridge, TQ7 1EE

Guide Price £140,000

2 1 1



DESCRIPTION

This Grade II listed cottage, located in the heart of Kingsbridge, presents a unique opportunity for those looking to infuse their own style and creativity into a home with character. The property features open-plan living spaces, a utility room, bathroom, and two double bedrooms, offering a solid foundation for a thoughtful renovation.

SITUATION

Kingsbridge is a thriving South Hams town with a friendly and active local community and with excellent facilities including a leisure centre, cinema and highly rated schools. The town offers an ideal focal point to enjoy the exceptional coastline and local beaches and the peaceful Devon countryside, as well as being close to other popular towns such as Dartmouth, Totnes and Salcombe.

FURTHER INFORMATION

As part of our transparency policy, we request our sellers fill out a Property Information Questionnaire. This information can be provided to you. However, we recommend that you verify any information given during the conveyancing process.

GRADE II LISTED



6 Devon Square, Kingsbridge, TQ7 1EE

Approximate Gross Internal Floor Area = 58.0 sq m / 625 sq ft

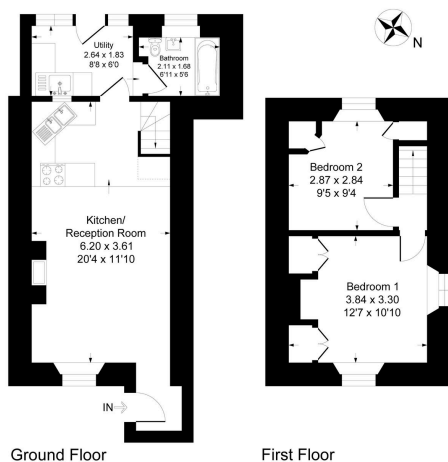


Illustration for identification purposes only, measurements are approximate, not to scale.

- Popular town location
- Parking
- Two bedrooms
- Utility
- In need of modernisation
- Proximity to amenities
- Open plan kitchen/reception room
- Wood burning stove

