



Luscombe Maye
Since 1873

Chillington

Sale By Tender £200,000

2 1 1



*** AUCTION SALE VIA BAMBOO AUCTIONS ***

Located in the heart of the picturesque village of Chillington, this charming two-bedroom period cottage presents a fantastic opportunity to create your dream home. Brimming with character and potential, this property features well-proportioned rooms and a wealth of period details, including a stunning large inglenook fireplace with a wood burner, perfect for cosy evenings.

The property also benefits from a garage/barn and several outbuildings, offering endless possibilities for extended living accommodation (subject to planning permission), additional storage, or even a creative transformation into a separate dwelling. With the right vision, this could easily become a versatile space to suit your needs.

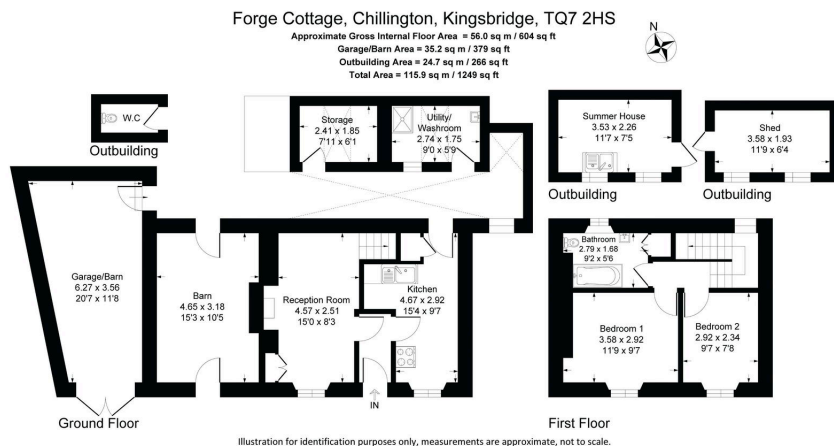
The large rear garden is a real highlight, offering plenty of room for outdoor living, gardening, or even further expansion (subject to planning). The private, enclosed garden ensures a peaceful and secluded atmosphere, ideal for relaxation and entertaining. A convenient parking space is located immediately outside the front of the property.

Conveniently located within close proximity to local amenities, this property combines both charm and practicality, making it the perfect choice for those seeking a quiet village setting with excellent potential.

This property offers a wonderful canvas for buyers to create a home tailored to their needs. With an abundance of storage and potential for further development, it truly represents a rare opportunity in a desirable location.

Chillington is a well-situated village along the A379 between Kingsbridge and Dartmouth. The village benefits from a range of amenities including a village shop and post office, health centre, village hall, highly-rated public house and has a number of bus stops. Chillington lies within a five-minute drive of the beautiful 2 mile stretch of beach at Torcross and is only a short drive from the market town of Kingsbridge.





- Two-bedroom period cottage with original features
- Garage/barn and several outbuildings
- Large inglenook fireplace with wood burner
- Parking space outside
- Auction Sale
- Opportunity for Development STPP
- Kitchen/Dining Room
- Large, private rear garden
- Close to local amenities

