



Luscombe Maye  
Since 1873



# 18 The Grove, Blackawton

£295,000

3 1 1



This beautifully presented three-bedroom semi-detached home is located in the sought-after village of Blackawton. Recently refurbished to a high standard, it offers modern family living with fantastic views.

The property has been completely transformed, including new external walls, insulation, and a full internal refurbishment with a new kitchen, bathroom, and electric heating system.

On the ground floor, an inner hallway provides space for coats and boots, while a separate utility room houses the washing machine, tumble dryer, and electric boiler. The ground-floor WC includes a hand wash basin and vanity unit. The kitchen/dining area is well-lit with inset spotlights and pendant lighting, offering views over the garden and meadow. It is equipped with wall-mounted and under counter units, a four-ring electric hob, double oven, full-size dishwasher, and a sink with a drainer overlooking the garden. The spacious living room spans the full width of the property, with an electric stove and double doors opening onto a large deck with beautiful views.

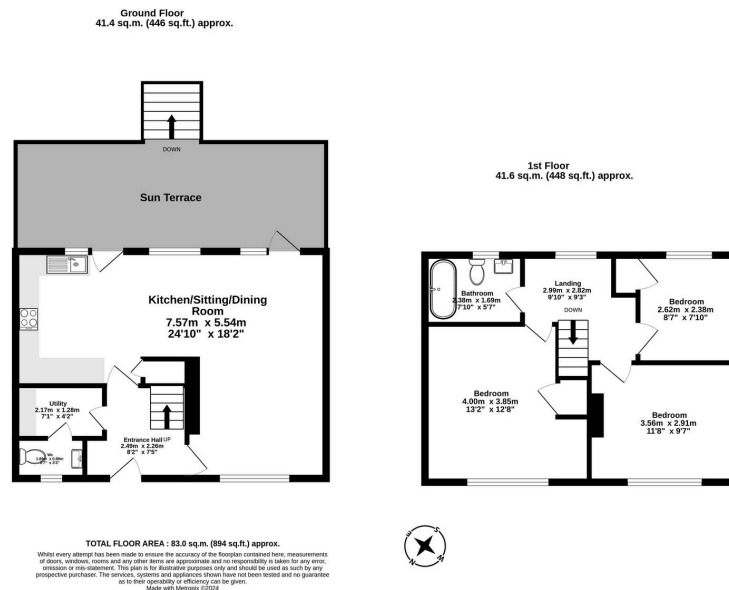
The first floor has three bedrooms, with the two front-facing rooms offering views of the front garden, and the third overlooking the rear garden and valley. The family bathroom includes a double-ended bath, hand shower attachment, wall-mounted shower valve, WC, hand wash basin, and vanity unit.

The home also includes USB charging sockets in the kitchen and dining areas, and energy-efficient LED lighting throughout.

The front garden has a paved path to the front door and a hard standing area for a bike or small vehicle. The rear garden includes a large deck, storage space, and a lawn with potential for gardening. The rear offers stunning valley views, with the adjoining meadow owned by local residents.







- Three Bedrooms
- Light and airy accommodation
- Open Plan Kitchen/Living area
- Edge of village location
- Family Bathroom
- Ground Floor W.C. and Utility
- Superb meadow views area
- Local Occupancy Devon Rule applies

