



Luscombe Maye
Since 1873

Crossways Park Homes, Kingsbridge

Guide Price £160,000

🛏 2 🚿 1 🚿 1



This newly decorated park home offers a harmonious blend of modern comfort and classic charm, featuring approximately 763 sq ft of meticulously maintained living space.

Inside, the property showcases a well-equipped kitchen with white cabinets, chrome knobs, dark countertops, and a matching backsplash. The light-coloured wood-effect laminate flooring adds warmth, while the large window above the sink ensures ample natural light. Adjacent to the kitchen, the dining room features a bay window with white plantation shutters. The spacious reception room serves as a cosy retreat, centred around a charming fireplace with a white mantel. Large windows, complemented by plantation shutters, allow plenty of natural light and privacy. An arched opening enhances the flow between the living and dining areas. The property includes two comfortable bedrooms, both with built-in wardrobes featuring light-coloured wooden doors. The modern bathroom provides a walk-in shower with white subway tiling, a heated towel rack, and a white cabinet.

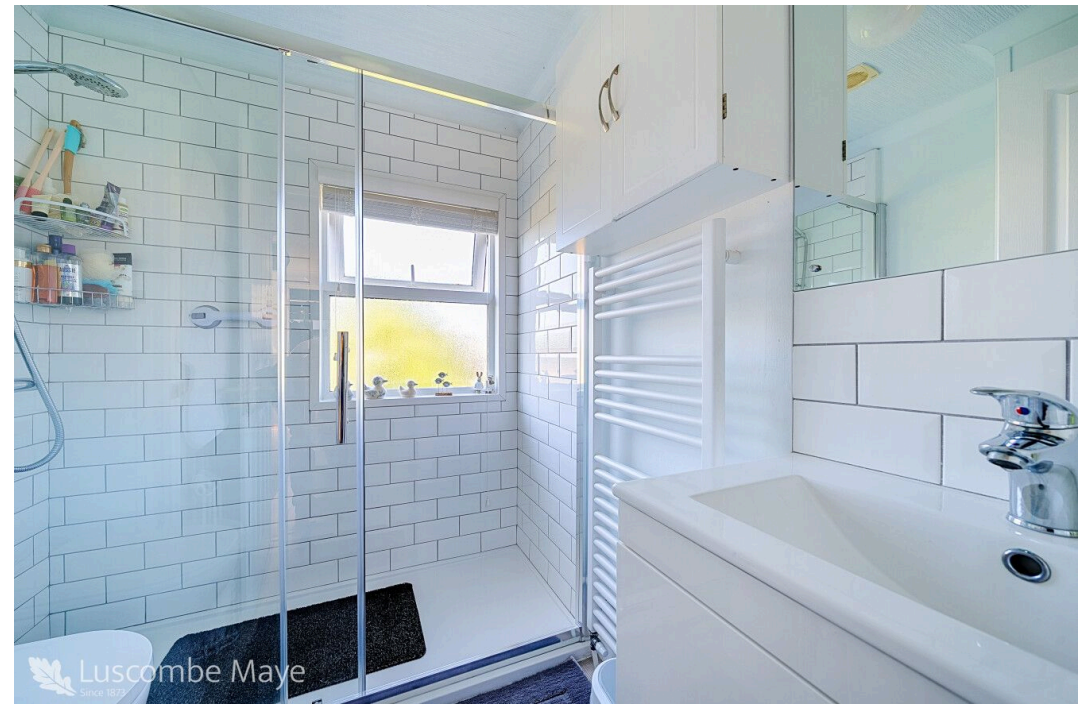
The exterior is equally impressive, with a facade in textured light beige render and a smart brick skirt. The low-pitched, gabled roof is tiled in dark grey, and white, multi-paned windows, including bay windows, enhance the home's appearance. The surrounding grounds feature well-maintained gardens with mature shrubs and hedging, a patio area for outdoor relaxation, and . A bamboo fence enhances privacy.

The location offers a blend of tranquillity and convenience. Multiple bus stops, including Parkland Camping and Sorley Green Cross, are located between a few metres away, providing easy access to public transport. While the property enjoys a rural feel, Kingsbridge town centre is easily accessible, offering a range of local shops and services. Local schools in Kingsbridge cater to educational needs.

SERVICES Mains electricity and water. Private drainage, Calor Gas heating.

TENURE Leasehold. Service charge: £120 every 28 days

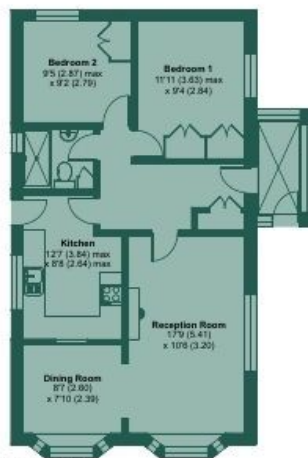
COUNCIL TAX The property is in Council Tax Band A.





Crossways Park Homes, Kingsbridge, TQ7

Approximate Area = 763 sq ft / 70.9 sq m
For identification only - Not to scale



GROUND FLOOR



- Two Bedroom Park Home
- Modern, Light Filled Accommodation
- Two Sheds Provide Additional Storage
- Close to Local Amenities
- Immaculately Presented Throughout
- Walk In Shower
- Well-Maintained Gardens

