



Luscombe Maye
Since 1873

Little Pandora, Dartmouth Road, East Allington

£350,000

🛏 2 🚿 1 🛋 2



DESCRIPTION

Set on a spacious, sunny plot, Little Pandora boasts far-reaching countryside views and occupies a prime position in the charming village of East Allington.

This detached bungalow features an entrance porch with space for shoes and coats, an open-plan lounge/dining room with an open fire, a kitchen with an Aga, two bedrooms, a bathroom, and a conservatory. Little Pandora presents a fantastic opportunity for complete renovation, allowing buyers to put their own stamp on the property.

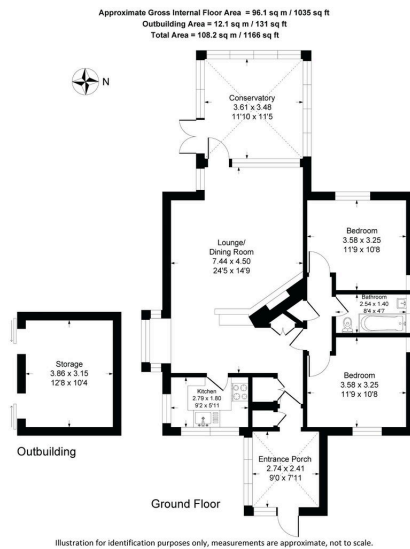
The property also enjoys a generous plot, mostly laid to lawn, with the added benefit of an outbuilding. There is also a detached garage with road access within the plot.

SITUATION

East Allington is a picturesque village located in the South Hams in South Devon, offering a quiet rural location with the nearby towns of Kingsbridge and Totnes a short drive away. Benefitting from a superb community who are friendly and active the village of East Allington has a primary school which is very highly regarded, a lovely nineteenth century pub, a beautiful church with 13th century origins and a children's play park.



Little Pandora, Dartmouth Road, East Allington, TQ9 7QX



- Detached Bungalow
- Two Bedrooms
- Countryside Views
- Ample Scope For Renovation
- Popular village of East Allington
- Walking Distance To Local Primary School
- Plenty of Outdoor Space
- Open Plan Living/Dining Room

 **Luscombe Maye**
 Since 1873



Use the QR code for further "Material Information" about this home

