



Luscombe Maye
Since 1873

15 Crabshell Heights

£495,000

🛏 2 🚿 2 🛋 1



This immaculately presented two-bedroom top-floor apartment boasts stunning views over the Kingsbridge Estuary, offering a tranquil and scenic setting. The modern open-plan kitchen, dining, and living space is bathed in natural light, thanks to three Velux windows that brighten the room. A glazed French door opens out onto a spacious decked roof terrace, the perfect spot for entertaining or simply enjoying the beautiful surroundings.

The kitchen features stylish tiled flooring that contrasts with the carpeted living area, providing both practicality and a visual distinction. The shaker-style kitchen is finished with a wooden worktop, offering both a warm aesthetic and functional design. The clean, crisp lines of the space are complemented by a tasteful decorative finish, adding to the apartment's sophisticated charm.

The hallway leads to a generously sized double bedroom, while a separate, well-appointed family bathroom offers modern fixtures and fittings. The bathroom is complete with a vanity unit containing a WC and basin, contributing to the apartment's stylish yet practical design.

Additional features include designated undercover parking and visitor parking, making this property as convenient as it is beautiful.

Perfectly positioned for those who appreciate both style and functionality, this apartment is an ideal home with a prime location near the Kingsbridge Estuary.

Verified Material Information

Council tax band: E

Tenure: Leasehold

Lease length: 999 years remaining (983 years from 2009)

Ground rent: £250 pa

Service charge: £2900 pa



15 Crabshell Heights, Embankment Road, Kingsbridge, TQ7 1FE

Approximate Gross Internal Floor Area = 83.4 sq m / 898 sq ft

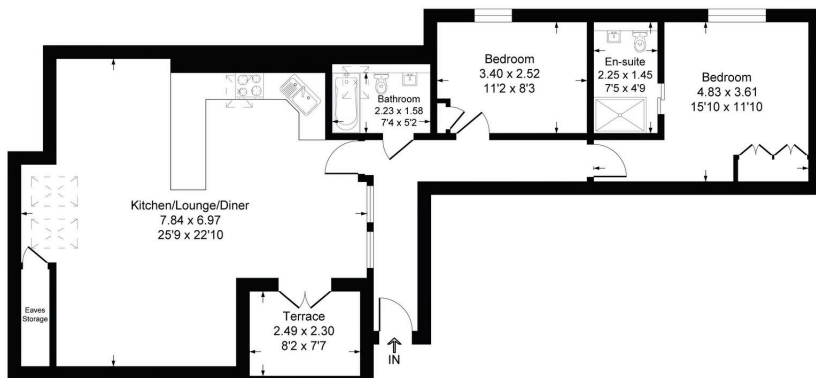


Illustration for identification purposes only, measurements are approximate, not to scale.

- Two bedroom top floor apartment
- Bathroom and en suite
- Contemporary kitchen
- Immaculately presented throughout
- Open plan living and dining
- Outside sitting/ dining area
- Covered parking space and visitor parking

