



Luscombe Maye

Since 1873

West Charleton, Kingsbridge

£625,000

4 4 4



History

Dating from around 1790 and originally two cottages, Homestead was extended to become a farmhouse in the mid 1800's.

The property was previously owned by the Marquis of Northampton and formed part of the Charleton Estate with the Homestead farm running to around 100 acres.

From the 1920's the land was gradually sold off and today Homestead is a family 4-bedroom house.

Construction

The older part of Homestead is constructed of local stone and cob with the newer part of stone and brick, both under a slate roof.

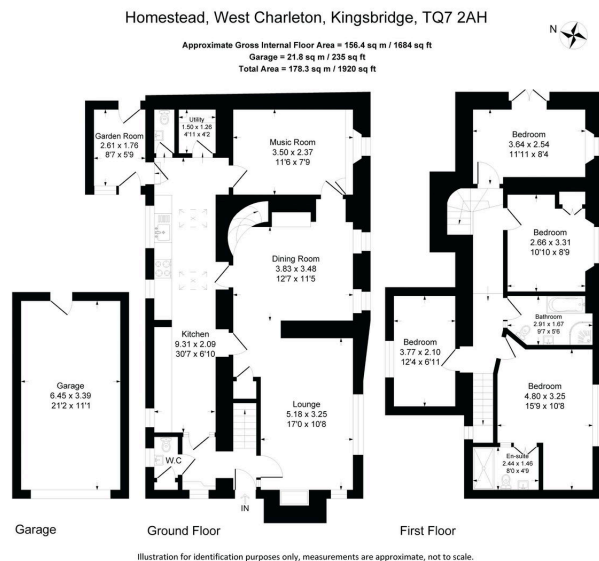
The house features two original inglenook fireplaces and a beautiful spiral stone staircase, plus exposed stone/cob walls and beams throughout.

Layout

Beyond the open porch, Homestead welcomes you into a spacious entrance hall with a practical boot room and cloakroom. The ground floor showcases an abundance of character, with exposed beams, slate flooring, and two striking inglenook fireplaces in the sitting and dining rooms, each retaining their historic charm. A versatile music room offers additional reception space, while the large farmhouse kitchen, stretching the length of the property, is beautifully appointed with butler sink. A utility room, an additional cloakroom, and a garden room with access to the side patio and rear garden steps complete the ground floor. A traditional staircase rises from the main hall, while an impressive spiral stone staircase in the dining room adds a distinctive period touch.

Upstairs, four well-proportioned double bedrooms provide peaceful retreats, each benefiting from exposed wooden floorboards and deep-set windows that enhance the home's historic character. The principle bedroom enjoys an en-suite with a spacious walk-in wardrobe, a full bathroom, and a large master bedroom.





- Stunning Detached Period Property
- Enclosed Rear Garden
- Character Features Throughout
- Boot Room & Separate Utility
- Two Cloakrooms & Two Bathrooms (1 en-suite)
- Driveway Parking & Garage
- Countryside Village Location
- Beautifully Appointed Farmhouse Kitchen
- Four Double Bedrooms
- High Quality Refurbishment

