



Luscombe Maye
Since 1873

Kiln Lane, Stokenham

Guide Price £559,950

3 2 1



Set within the desirable village of Stokenham, Westering is a charming and well-presented home that offers comfortable living spaces and delightful outdoor areas, all within a peaceful village setting.

The property features a spacious open-plan kitchen, dining and living room, flooded with natural light thanks to its south-facing aspect. The living room is a welcoming space, complete with a log-burning stove that adds a cosy touch. The galley-style kitchen is practical and modern, offering plenty of storage, generous work surfaces and integrated appliances including a double oven and electric hob. A door leads from the kitchen to the side of the property, while French doors in the dining area open onto a south-facing patio, making it easy to enjoy outdoor living. This patio offers far-reaching countryside and sea views, providing a tranquil spot for relaxation or dining.

The property boasts three bedrooms, including a spacious master bedroom with views of the rear garden and a recently updated ensuite shower room. The second bedroom, currently used as a study, has French doors leading to the south-facing patio, along with dual aspect double glazed windows, the third bedroom also enjoys a dual aspect garden outlook. A family bathroom, complete with an electric shower over the bath, serves the household.

The rear garden is an inviting space, offering privacy and various features, including a fire pit area and steps leading to a level lawn with vegetable patches. A patio path encircles the house, providing convenient access to the side. The front of the property includes a neat lawn and a driveway with ample parking for multiple vehicles.



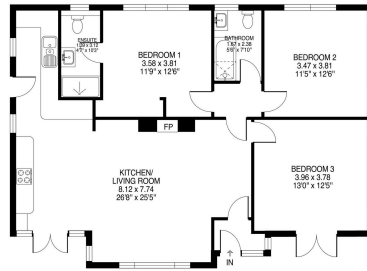


Illustration for identification purposes only, measurements are approximate, not to scale.

- Stunning Detached Bungalow • Open Plan Living
- Superb Far Reaching Rural Views
- Wood Burning Stove
- Fantastic Garden
- Sea Views
- Flooded With Natural Light Views
- Three Double Bedrooms
- Proximity To Beach
- South Facing Aspect

