



Luscombe Maye

Since 1873

Valley View, Churchstow

Guide Price £575,000

🛏️ 4 🚿 2 🚻 2



Welcome to this delightful modern detached cottage, a perfect blend of contemporary design and rustic charm, nestled in the heart of a serene village. This exceptional property offers the ideal retreat for those seeking both luxury and tranquillity.

As you approach the cottage, you'll be immediately struck by its inviting curb appeal and large driveway. The sleek, modern façade is complemented by traditional touches, creating a harmonious blend that enhances the property's character. Step inside to discover a spacious and light-filled interior, which features a stylish, contemporary kitchen with ample counter space, perfect for both everyday cooking and entertaining with space for a dining table. The living room is thoughtfully designed for comfort and functionality, offering a warm and welcoming space for family and friends with patio doors opening to the garden. There is also a downstairs double bedroom, ideal for future proofing.

The cottage boasts four generously sized bedrooms, including a master with ensuite. Each room is tastefully decorated, combining modern finishes with cosy, rustic elements that make you feel right at home. One of the standout features of this property is its paddock, providing a versatile space for a variety of outdoor activities. Whether you envision a haven for goats & chickens, a thriving vegetable garden, or simply a beautiful open space for relaxation, the paddock offers endless possibilities.

Outside, the beautifully landscaped garden features a charming patio area, ideal for al fresco dining or enjoying a quiet morning coffee while taking in the tranquil views of the surrounding countryside. The total plot measures 0.34 acres and the paddock measures 0.15 acres.

Located in a picturesque village, this cottage enjoys a peaceful setting while still being conveniently close to local amenities and transport links. Embrace the best of both worlds with a modern home that offers a generous slice of countryside living.



Valley View , Churchstow , TQ7 3QZ
 Approximate Gross Internal Floor Area = 107.8 sq m / 1161 sq ft

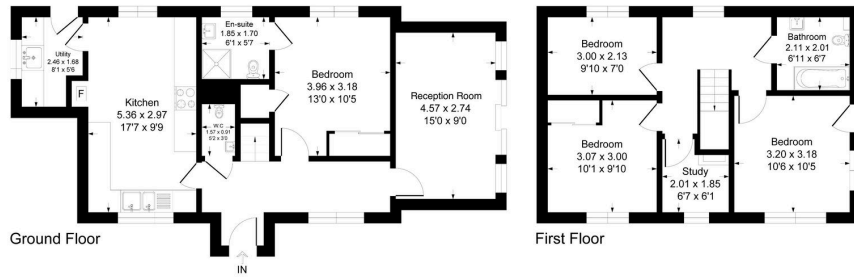
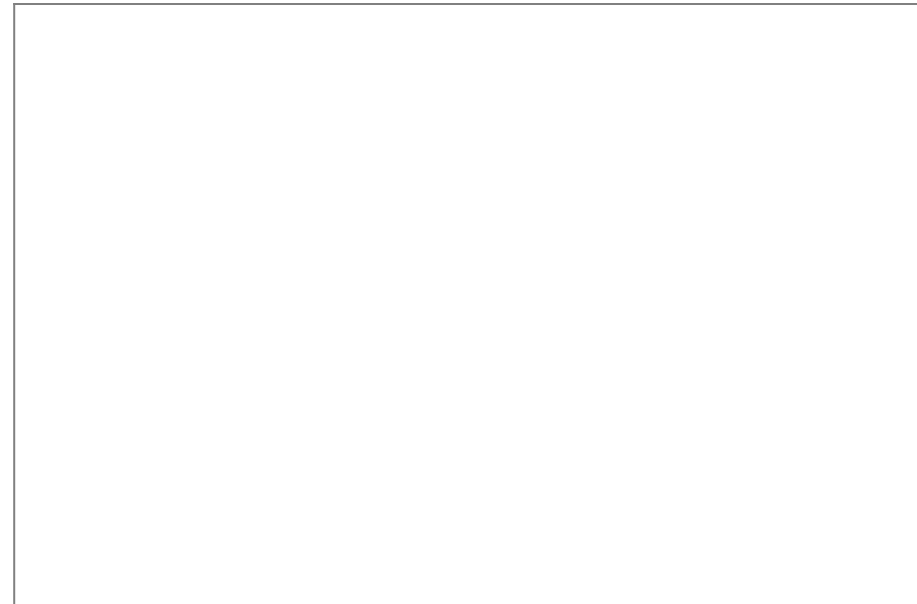


Illustration for identification purposes only, measurements are approximate, not to scale.

- Detached
- Kitchen/Diner
- Utility Room
- Four Double Bedrooms
- Ensuite
- Study
- Large Garden
- Paddock
- Underfloor Heating
- No Forward Chain



Important Notice: Luscombe Maye gives notice that: 1. These particulars do not constitute an offer or contract or part thereof. 2. All descriptions, photographs and plans are for guidance only and should not be relied upon as statements or representations of fact. All measurements are approximate and not necessarily to scale. Any prospective purchaser must satisfy themselves of the correctness of the information within the particulars by inspection or otherwise. 3. Luscombe Maye does not have any authority to give any representations or warranties whatsoever in relation to this property (including but not limited to planning/building regulations), nor can it enter into any contract on behalf of the Vendor.