



## SITUATION & DESCRIPTION

Located on the first floor of a beautiful Grade II Listed building on Fore Street is this generous two-bedroom apartment enjoying a quiet position set-back from Fore Street but still within easy walking distance of the local amenities and schools.

The property is accessed via a well-maintained communal entrance hall and comprises a spacious living room with high ceilings and a window to the side aspect, kitchen with a range of wall-mounted storage cupboards and views over the church gardens to the side of the property. The apartment enjoys two spacious and naturally light and bright double bedrooms, a shower room and spacious family bathroom comprising bath with shower over, pedestal hand basin and WC.

Apartment 2 at 33 Fore Street is the ideal property for a first-time buyer or lock up and leave.

Kingsbridge is a picturesque market town located at the head of the Salcombe estuary with excellent boating and sailing facilities within the sheltered estuary waters. The delightful town enjoys an abundance of amenities and facilities including a wide range of shops, churches, cottage hospital, health centre and a sports centre with indoor swimming pool. The town also has a library, primary school and highly rated secondary school.

Kingsbridge is surrounded by the renowned South Hams coastline with a large number of beaches to enjoy and spectacular scenery stretching from Dartmouth in the West to Plymouth in the East.

The property is available as an investment with tenants in situ or with vacant possession. It has been let for several years and the current Assured Shorthold Tenancy Agreement is at £10,200 per annum equating to £850 pcm.

## TENURE

Leasehold. 199 years from 2013. Service charge approx. £1050 per annum. Ground rent £169.85 per annum with RPI increase every 5 years.

## SERVICES

Mains electricity, water and drainage. Gas fired central heating.

## COUNCIL TAX

Council Tax Band A.

## LOCAL AUTHORITY

South Hams District Council, Follaton House, Plymouth Road, Totnes TQ9 5NE. Tel: 01803 861234.

## VIEWINGS

Viewing strictly by appointment with Luscombe Maye 01548 857474.

Score	Energy rating	Current	Potential
92+	A		
81-91	B		
69-80	C		72 C
55-68	D	61 D	
39-54	E		
21-38	F		
1-20	G		

## Flat 2, 33 Fore Street, Kingsbridge, TQ7 1PG

Approximate Gross Internal Floor Area = 61.8 sq m / 666 sq ft

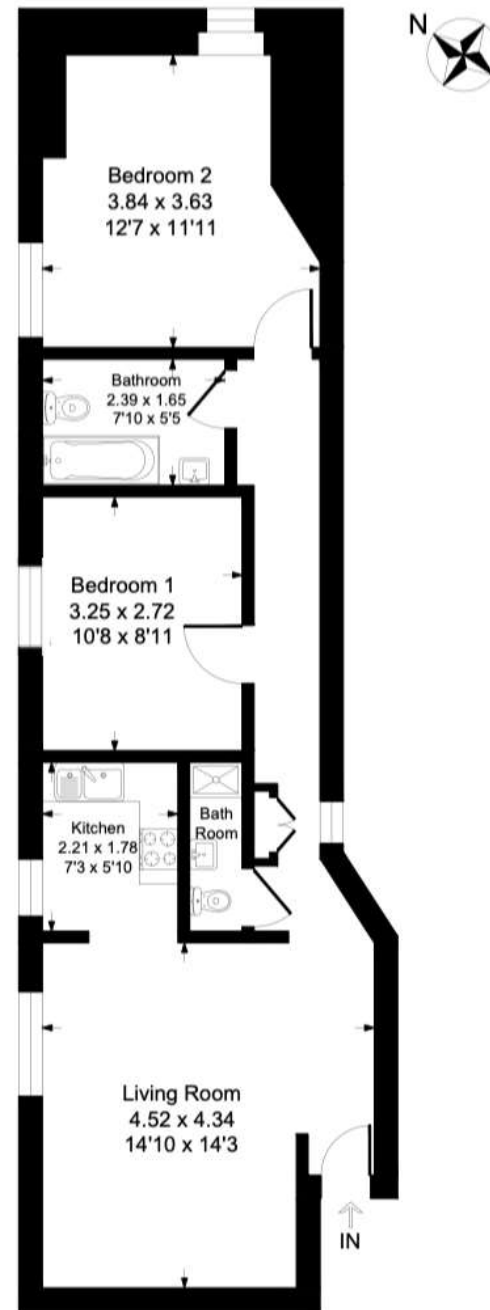


Illustration for identification purposes only, measurements are approximate, not to scale.

All measurements are approximate are for general guidance purposes only and whilst every care has been taken to ensure their accuracy, they should not be relied upon and potential buyers are advised to recheck the measurements

Kingsbridge  
62 Fore Street, Kingsbridge, Devon, TQ7 1PP

📞 01548 800178

@ kingsbridge@luscombemaye.com

🌐 luscombemaye.com



 **Luscombe Maye**  
Since 1873