

Paul Mason Associates



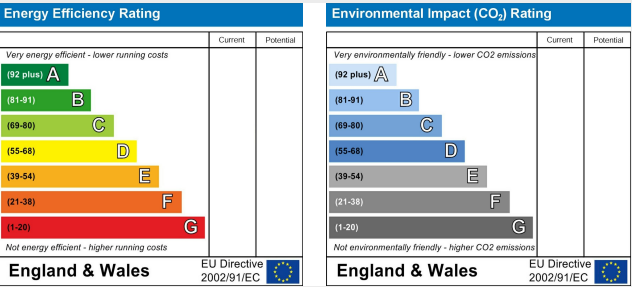
The Street, Hatfield Peverel, CM3 2DP

£1,200

- Two Bedroom Flat
- First Floor
- Private Courtyard Garden
- Walking Distance to Hatfield Peverel Station
- Located in the Village Close to Amenities
- Lounge
- Fitted Kitchen
- Three Piece Bathroom Suite
- Available Immediately
- EPC - TBC

Situated in a popular village of Hatfield Peverel close to the station with links straight to London Liverpool Street.

This property commences with stairs to the first floor landing which benefits from a storage cupboard and there are doors to the three piece bathroom suite with a shower above the bath, lounge, generous sized kitchen and two good size bedrooms. The property also benefits from a private courtyard garden which is rare in the village.



ACCOMMODATION

GROUND FLOOR

External front door. Stairs to first floor.

FIRST FLOOR

Hallway

Storage Cupboard

Lounge

3.37m x 3.08m (11'0" x 10'1")

Kitchen

3.78m x 1.98m (12'4" x 6'5")

Bedroom One

3.46m x 2.65m (11'4" x 8'8")

Bedroom Two

2.67m x 2.47m (8'9" x 8'1")

Bathroom

2.21m x 1.85m (7'3" x 6'0")

EXTERIOR

Courtyard Garden

Property Services

Gas - Mains

Electric - Mains

Water - Mains

Drainage - Mains

Heating - Gas Central Heating

Local Authority - Braintree

Viewings

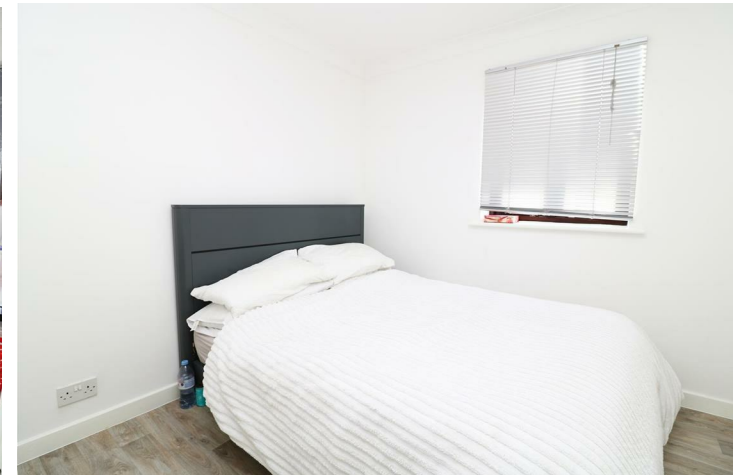
Strictly by appointment only
through the selling agent Paul

Mason Associates 01245
382555.

Important Notices

We wish to inform all prospective purchasers that we have prepared these particulars including text, photographs and measurements as a general guide. Room sizes should not be relied upon for carpets and furnishings. We have not carried out a survey or tested the services, appliances and specific fittings. These particulars do not form part of a contract and must not be relied upon as statement or representation of fact.

Should you be successful in having an offer accepted on a property through ourselves, then there is an administration charge of £25 inc. VAT per person (non-refundable) to complete our Anti Money Laundering Identity checks.



Paul Mason Associates

35 The Street
Latchingdon
Chelmsford
Essex
CM3 6JP
T: 01621 742 310

Bruce House
17 The Street
Hatfield Peverel
Chelmsford
CM3 2DP
T: 01245 382 555

Sales | Lettings | Development | Investment

F: 01245 381257 E: info@paulmasonassociates.co.uk www.paulmasonassociates.co.uk

Paul Mason Associates Limited Registered in England Number - 6767946
Registered Office - Bruce House, The Street, Hatfield Peverel CM3 2DP





35 The Street
Latchingdon
Chelmsford
Essex
CM3 6JP

T: 01621 742 310

Bruce House
17 The Street
Hatfield Peverel
Chelmsford
CM3 2DP

T: 01245 382 555

Sales | Lettings | Development | Investment

F: 01245 381257 E: info@paulmasonassociates.co.uk www.paulmasonassociates.co.uk

Paul Mason Associates Limited Registered in England Number - 6767946
Registered Office - Bruce House, The Street, Hatfield Peverel CM3 2DP

